

Issue: Open House Municipal Preview  
Issue Date: Oct 24/2016

Consultant: **SMALL & ROSSELL LANDSCAPE ARCHITECTS**  
3012 meadow road, sooke, b.c., v9c 1r9  
t: 250-642-6907  
www.smallandrossell.com

Project: **English Inn**  
429 Lampson Street, Victoria, BC  
for Aragon (English Inn) Development Corp.

Sheet Title: **HITHER GREEN PARK CONTEXT PLAN**

Drawn By: AJS  
Checked: CAR

Project Number: \_\_\_\_\_  
Scale: 1:500

Revision: \_\_\_\_\_  
Sheet Number: **L2.70**

**MERRICK ARCHITECTURE**  
BOROWSKI SAKUMOTO FLIGG MCINTYRE LTD.

**VANCOUVER**  
839 Cambie Street, Suite 300  
Vancouver BC V6B 2P4  
T: 604.683.4131  
F: 604.683.9313

**VICTORIA**  
18 Bastion Square  
Victoria BC V8W 1W9  
T: 250.480.7811  
F: 250.480.5215

www.merrickarch.com

# PARK CONTEXT PLAN

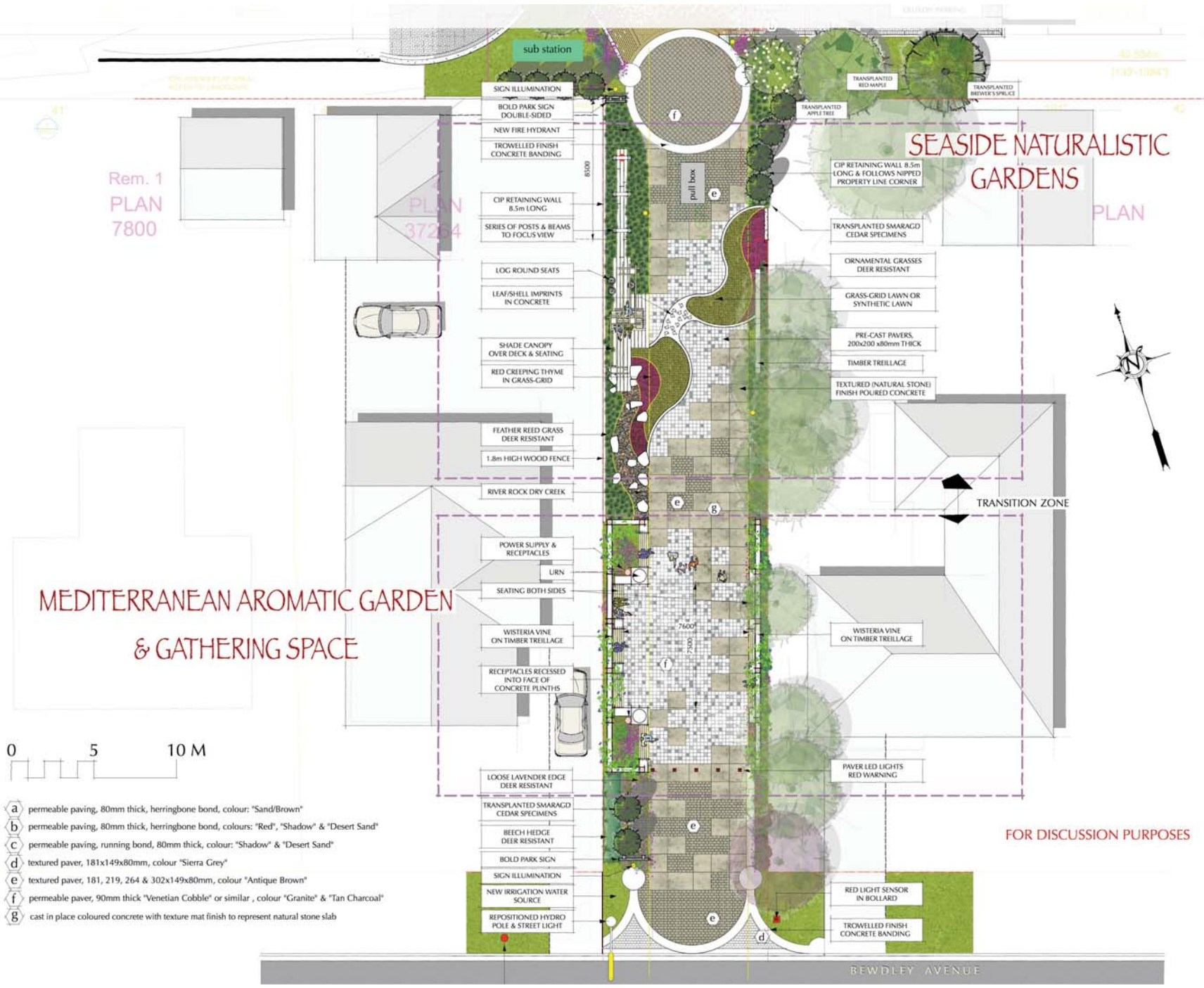
DND PROPERTY

DND PROPERTY

Corporation of the Township of Esquimalt

Revision No.	Description	Date

Issue	Issue Date
Development Permit	June 30/2016
Municipal Review Meeting	Aug 17/2016
For Client Review	Sept 09/2016
Municipal Review Meeting #2	Sept 30/2016
Open House Municipal Preview	Oct 24/2016



- a permeable paving, 80mm thick, herringbone bond, colour: "Sand/Brown"
- b permeable paving, 80mm thick, herringbone bond, colours: "Red", "Shadow" & "Desert Sand"
- c permeable paving, running bond, 80mm thick, colour: "Shadow" & "Desert Sand"
- d textured paver, 181x149x80mm, colour "Sierra Grey"
- e textured paver, 181, 219, 264 & 302x149x80mm, colour "Antique Brown"
- f permeable paver, 90mm thick "Venetian Cobble" or similar, colour "Granite" & "Tan Charcoal"
- g cast in place coloured concrete with texture mat finish to represent natural stone slab

FOR DISCUSSION PURPOSES

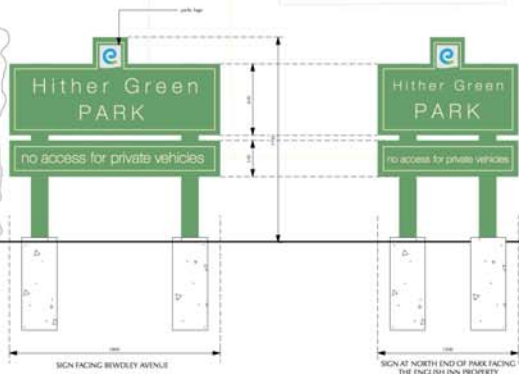
BEWDLAY AVENUE



LIGHTING CONCEPT



PARK SIGNS



MEDITERRANEAN AROMATIC GARDEN & GATHERING SPACE



FOR DISCUSSION PURPOSES

MERRICK ARCHITECTURE

BOROWSKI SAKUMOTO FLIGG MCINTYRE LTD.

**VANCOUVER**  
 839 Cambie Street, Suite 300  
 Vancouver BC V6B 2P4  
 T: 604.683.4131  
 F: 604.683.9313

**VICTORIA**  
 18 Bastion Square  
 Victoria BC V8W 1H9  
 T: 250.480.7811  
 F: 250.480.5215

www.merrickarch.com  
 Key Plan

Revision No.	Description	Date
B		

Issue	Issue Date
Development Permit	June 30/2016
Municipal Review Meeting	Aug 17/2016
For Client Review	Sept 09/2016
Municipal Review Meeting #2	Sept 30/2016
Open House Municipal Review	Oct 24/2016

Consultant

**SMALL & ROSSELL LANDSCAPE ARCHITECTS**  
 3012 maraer road, sooke, b.c., v9z 4r7  
 T: 250.642.4957  
 info@smallrossell.com  
 www.smallrossell.com

Project

**English Inn**  
 429 Lamson Street,  
 Victoria, BC  
 for  
 Aragon (English Inn) Development Corp.

Sheet Title  
**HITHER GREEN PARK PROPOSALS**

Drawn By  
 AJJS

Checked  
 CAR

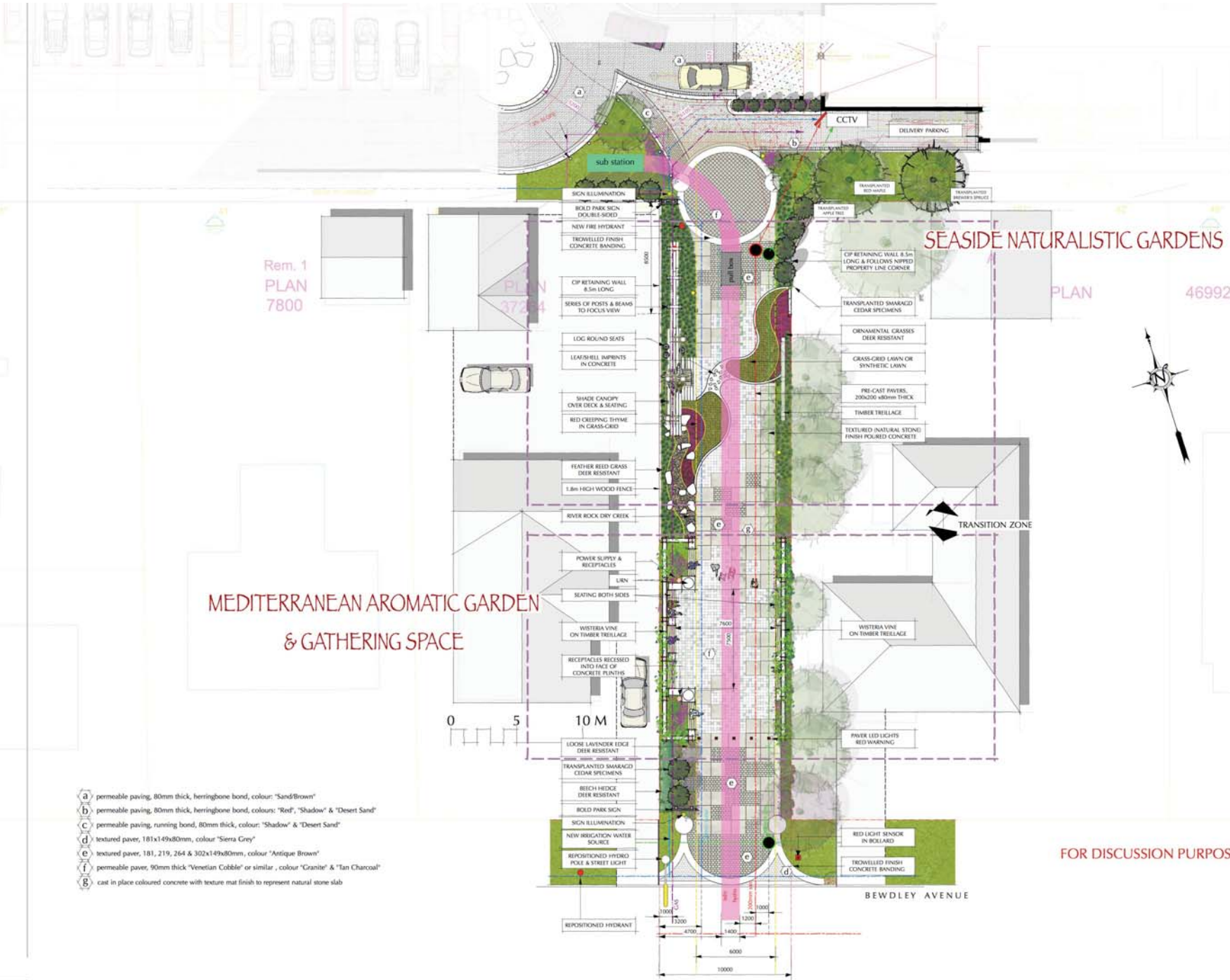
Project Number

Scale  
 1:150

Revision

Sheet Number

**L2.72**



- a permeable paving, 80mm thick, herringbone bond, colour: "Sand/Brown"
- b permeable paving, 80mm thick, herringbone bond, colours: "Red", "Shadow" & "Desert Sand"
- c permeable paving, running bond, 80mm thick, colour: "Shadow" & "Desert Sand"
- d textured paver, 181x149x80mm, colour "Sierra Grey"
- e textured paver, 181, 219, 264 & 302x149x80mm, colour "Antique Brown"
- f permeable paver, 90mm thick "Venetian Cobble" or similar, colour "Granite" & "Tan Charcoal"
- B cast in place coloured concrete with texture mat finish to represent natural stone slab

Revision No.	Description	Date

Issue	Development Permit	Issue Date

Consultant

**SMALL & ROSSELL**  
LANDSCAPE ARCHITECTS  
3072 monar road, suite 3 & 4, vancouver, bc  
t: 250.664.8197  
dhr@smallandrossell.com  
www.smallandrossell.com

Project

**English Inn**  
429 Lamson Street,  
Victoria, BC  
for  
Aragon (English Inn) Development Corp.

Sheet Title

**HITHER GREEN PARK  
WITH SERVICES**

Drawn By  
AJS

Checked  
CAR

Project Number

Scale  
1:125

Revision

Sheet Number

FOR DISCUSSION PURPOSES



Hither Green Park Mediterranean Garden  
& Community Event Space



Hither Green Park Seaside Garden



Seaside Garden Deck, Arbor & Reinforced Grass



Hither Green Park approached from Bewdley Avenue





Hither Green Park