



Gorge Park Pavilion



Site Plan





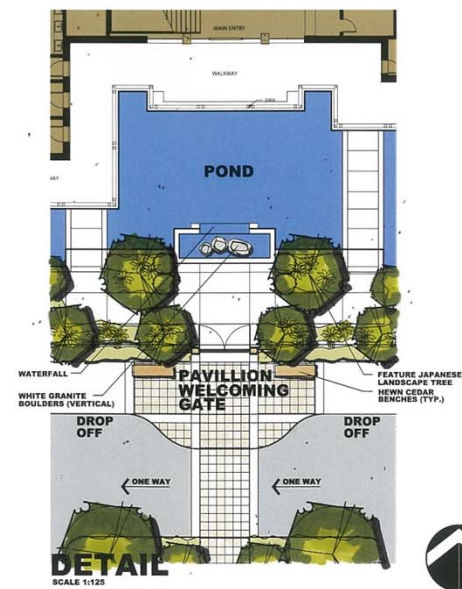
PLAN
SCALE 1:250

LEGEND

- MEDIUM DECIDUOUS TREE TO BE A SELECTION OF:
RED MAPLE, KATSURA TREE, HEDGE MAPLE, FRISIA
LOCUST, LITTLE LEAF LINDS
SIZE 6.0 CM CAL.; APPROXIMATE NO. -
- ORNAMENTAL DECIDUOUS TREE TO BE A SELECTION OF:
FLOWERING DOGWOOD, FLOWERING CHERRY,
SLOW GROWING CRAPPA, APPROXIMATE NO. - 50
- SMALL DECIDUOUS TREE TO BE A SELECTION OF:
CUT LEAF JAPANESE MAPLE, AMUR MAPLE, PINK
DOGWOOD, KOUSA DOGWOOD
SIZE 2.5 M HT.; APPROXIMATE NO. - 24
- COLUMNAR DECIDUOUS TREE TO BE A SELECTION OF:
ARMSTRONG RED MAPLE, DARWICK'S GOLD BIRCH
PRINCETON GOLD DINKGO.
SIZE 6.0 CM CAL.; APPROXIMATE NO. -
- CONIFEROUS TREE TO BE A SELECTION OF:
DOUGLAS FIR, RED CEDAR, JAPANESE BLACK PINE;
SIZE 2.5, 3.0, M HT.; APPROXIMATE NO. - 14
- MULTI-TREE TO BE A SELECTION OF: STAR MAGNOLIA (DEC),
VIBURNUM (DEC), CUT LEAF JAPANESE MAPLE (DEC), MOCK
ORANGE (DEC), LAC (DEC), SPECIER DEC. AZALEA;
SIZE 1.2 M HT.; APPROXIMATE NO. -
- LARGE SHRUB TO BE A SELECTION OF: NOOTKA
WAX (DEC), RUBUS (BL), RHODODENDRON (BL),
COTONASTER (BL), PORTUGUESE LAUREL (BL),
RED TWIG DOGWOOD (DEC), HYDRANGEA (DEC),
SIZE 27 CM POT; APPROXIMATE NO. -
- MEDIUM SHRUB TO BE A SELECTION OF: MAHONIA (BL),
RHODODENDRON (BL), JAPANESE AZALEA (BL), PINK
SCALONIA (BL), BARBERRY (BL), FERNS (BL),
SIZE 27 CM POT; APPROXIMATE NO. -
- MEDIUM SHRUB TO BE A SELECTION OF: JAPANESE FERNS (DEC),
SWORD FERNS (BL), BAMBOOS (BL), TALL GRASSES (DEC),
SIZE 27 CM POT; APPROXIMATE NO. -
- SMALL SHRUB TO BE A SELECTION OF:
JAPANESE SPIREA (DEC), LONG LEAF OREGON GRAPE (BL),
LAVENDER (BL), GOLDFLAME SPIREA (DEC), DWARF
HAKONE GRASS (DEC), ORNAMENTAL GRASS (DEC),
SIZE 21 CM POT; APPROXIMATE NO. -
- GROUND COVER TO BE A SELECTION OF:
KINKIDING (BL), WINTERGREEN (BL),
LINUM (BL), HAKONE GRASS (DEC), GRASSES (DEC),
SIZE 15 CM POT; PLANT 45 CM G.C.

NOTES

- LANDSCAPE AREAS ARE TO BE IRRIGATED WITH A
FULLY AUTOMATIC UNDERGROUND IRRIGATION SYSTEM.
- THIS DRAWING IS CONCEPTUAL ONLY AND NOT
INTENDED FOR CONSTRUCTION PURPOSES.



DETAIL
SCALE 1:125



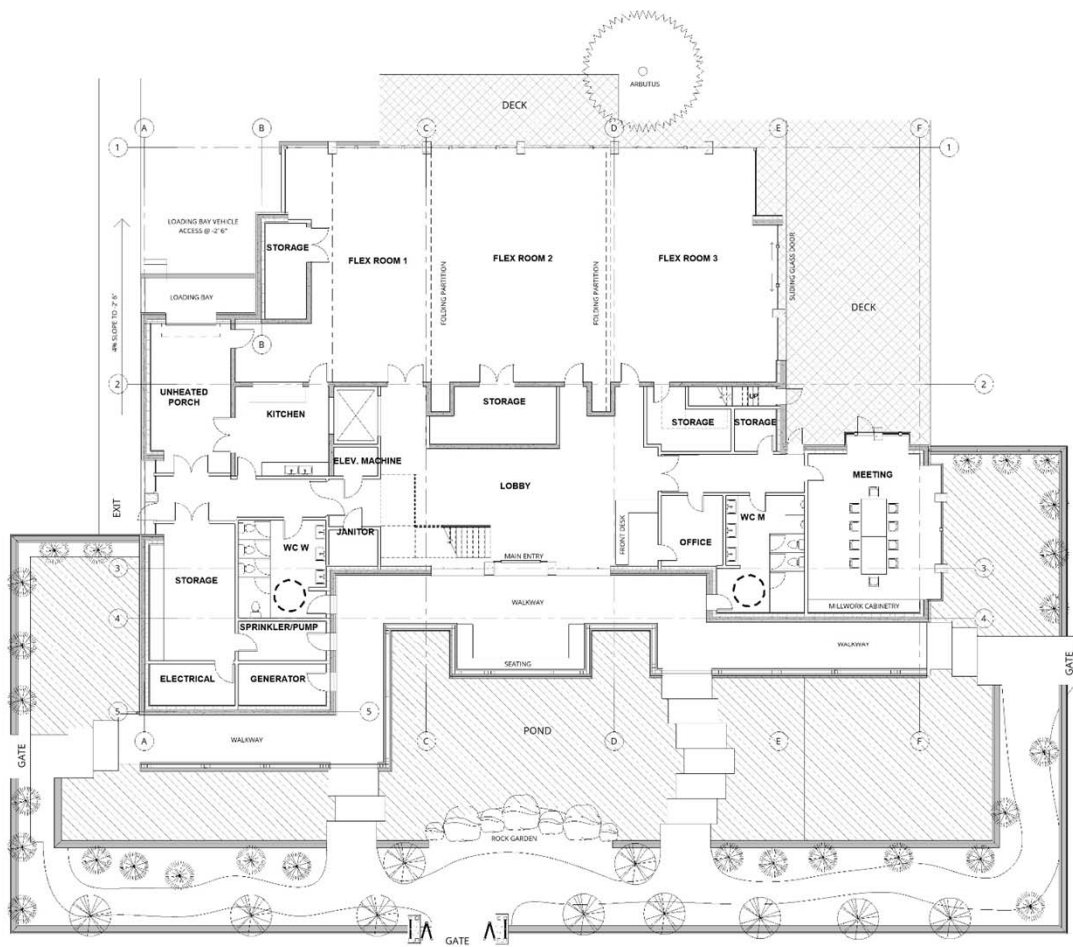
**Lombard
North
Group**

LOMBARD NORTH GROUP (BC) INC.
836 CONNORANT STREET, VICTORIA, BC, V8M 1B1
TELEPHONE: (250) 386-3336 FAX: (250) 386-4132
EMAIL: lombard@lombard.ca

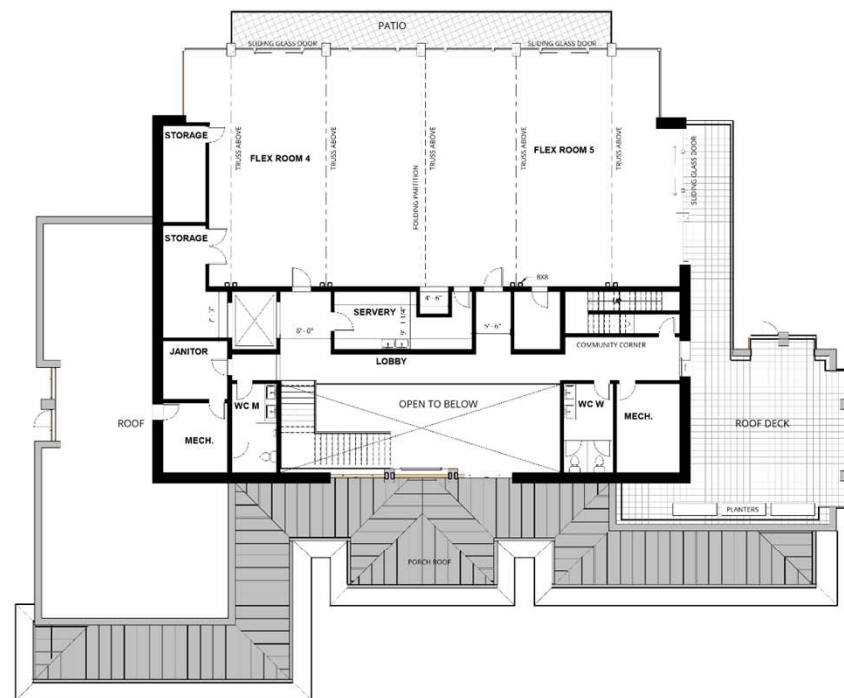


View From Japanese Garden

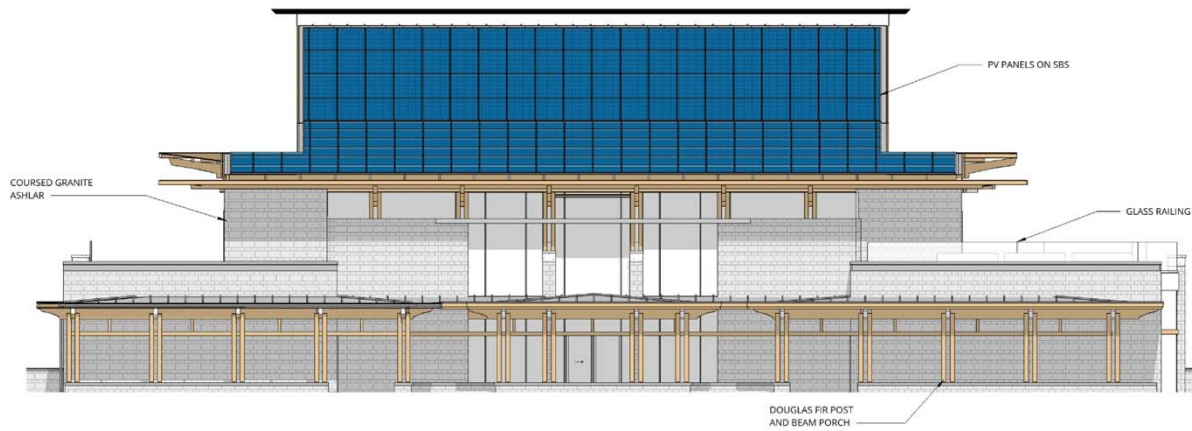




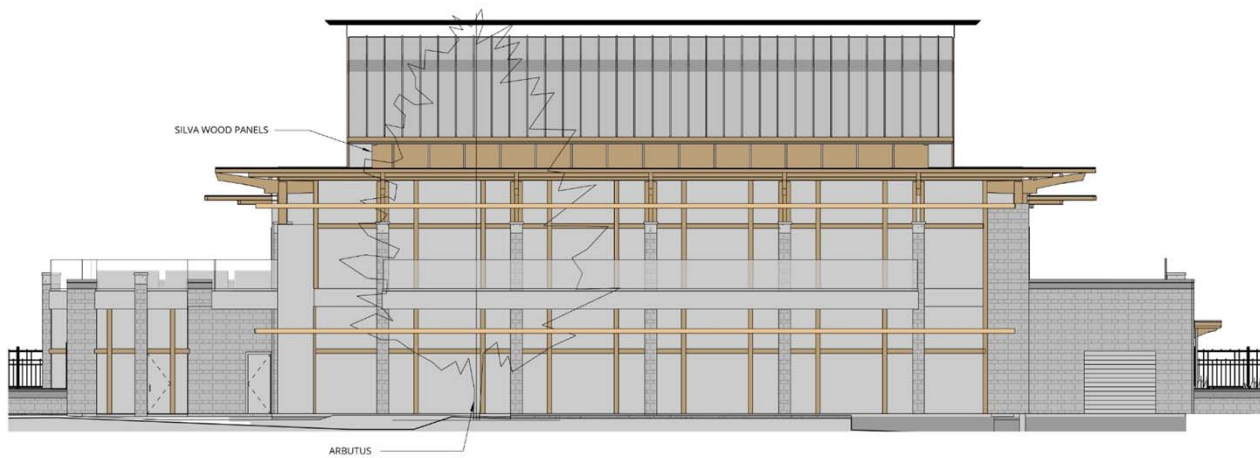
Level 1 Plan



Level 2 Plan



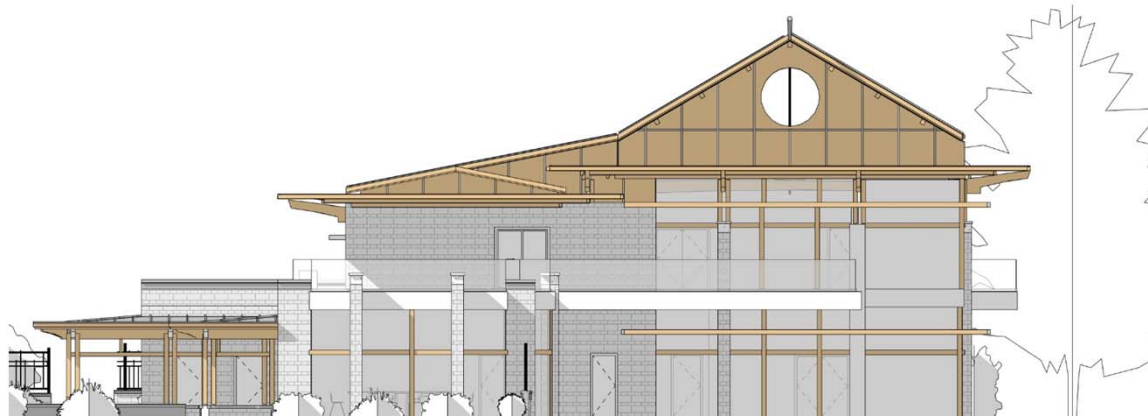
South Elevation (Main Entry)



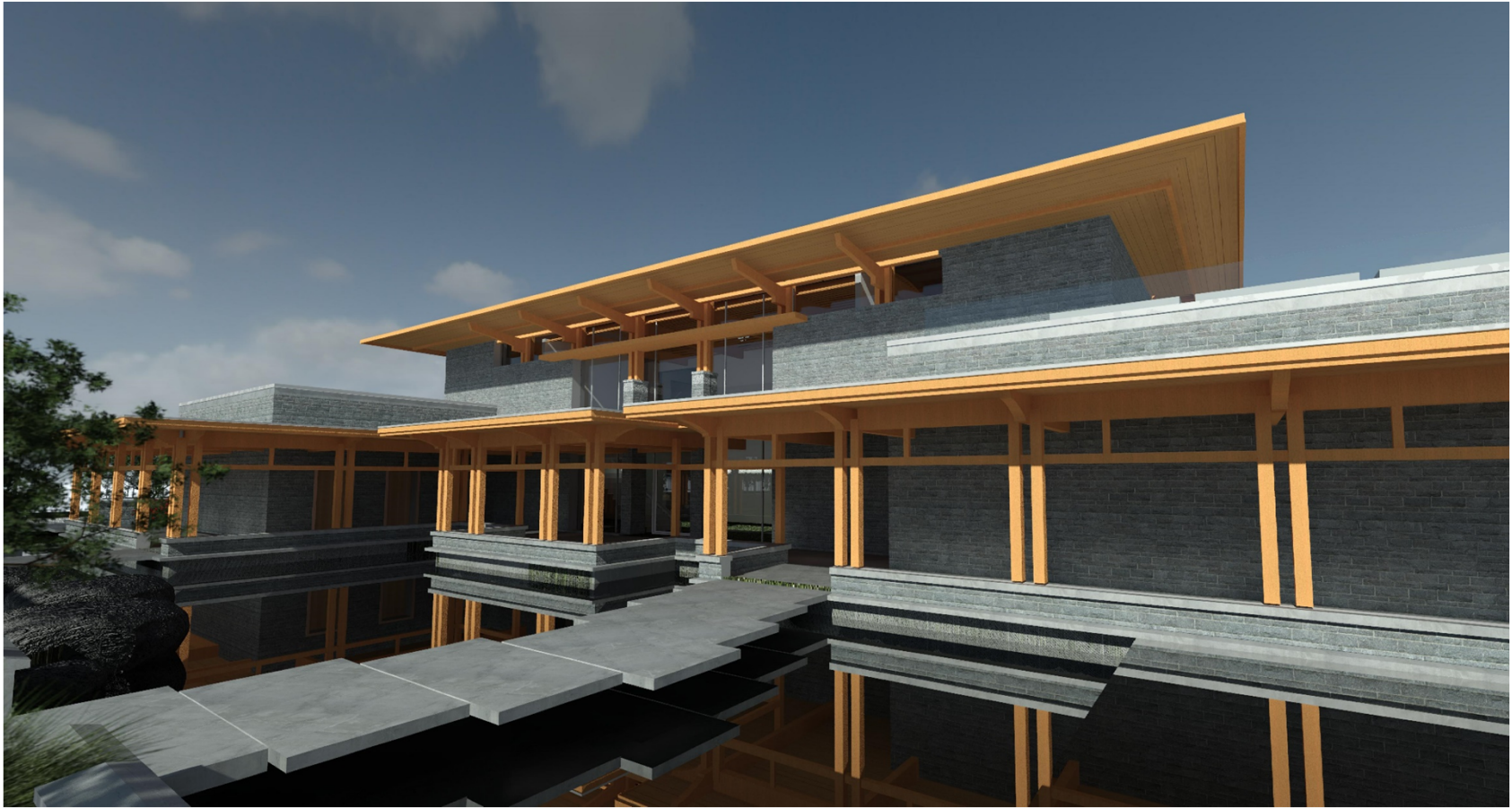
North Elevation (Flex Rooms)



West Elevation (Meeting Room)



East Elevation (Loading Bay)



Front Entry View



Meeting Room View



Flex Room View