



622 Admirals Rd,
Victoria, BC V9A 2N7

Signarama Tri Cities
302 - 1515 Broadway St.
Port Coquitlam, BC V3C-6M2
604-474-4674

Name: Chartwell
Company:

Phone:
Fax:

E-mail:

Approval:

Comments:

File:

Date: Jan 02, 2024 Time:

Colors:
Colours on the proof are for reference only
and they may not match the actual graphics.
Please, let us know if a colour sample is
required. A \$35 per colour sample will apply

Changes:
Please, describe changes to the proof. A
new proof will be provided for approval.
The first three (3) proof are included in the
quoted price. Subsequent changes/proof will
be charged at \$ 45 each.

Proposed New Signs

- One (1) Canopy Sign in 3D Letters (C)
- Two (2) Lightboxes (LBI & LB2)
- One (1) Banner (B)

Project Address

622 Admirals Rd, Esquimalt, BC V9A 2N7

RECEIVED

JUL 29 2025

CORP. OF TOWNSHIP
OF ESQUIMALT
DEVELOPMENT SERVICES

This design and drawing submitted for your review and approval is the exclusive property of **Signarama**. It may not be reproduced, copied, exhibited or utilized for any purpose, in part or in whole by any individual inside out outside without written consent of **Signarama**. © Copyright 2003



622 Admirals Rd,
Victoria, BC V9A 2N7

Signarama Tri Cities
302 - 1515 Broadway St.
Port Coquitlam, BC V3C-6M2
604-474-4674

Name: Chartwell
Company:

Phone:
Fax:

E-mail:

Approval:

Comments:

File:

Date: Jan 02, 2024 Time:

Colors:

Colours on the proof are for reference only
and they may not match the actual graphics.
Please, let us know if a colour sample is
required. A \$35 per colour sample will apply

Changes:

Please, describe changes to the proof. A
new proof will be provided for approval.
The first three (3) proof are included in the
quoted price. Subsequent changes/proof will
be charged at \$ 45 each.



LBI (Lightbox 1)

C (Canopy Sign)

LB2 (Lightbox 2)

B (Banner)

This design and drawing submitted for your review and approval is the exclusive property of **Signarama**. It may not be reproduced, copied, exhibited or utilized for any purpose, in part or in whole by any individual inside out outside without written consent of **Signarama**. © Copyright 2003



622 Admirals Rd,
Victoria, BC V9A 2N7

Signarama Tri Cities
302 - 1515 Broadway St.
Port Coquitlam, BC V3C-6M2
604-474-4674

Name: Chartwell
Company:

Phone:
Fax:

E-mail:

Approval:

Comments:

File:

Date: Jan 02, 2024 Time:

Colors:

Colours on the proof are for reference only
and they may not match the actual graphics.
Please, let us know if a colour sample is
required. A \$35 per colour sample will apply

Changes:

Please, describe changes to the proof. A
new proof will be provided for approval.
The first three (3) proof are included in the
quoted price. Subsequent changes/proof will
be charged at \$ 45 each.

This design and drawing submitted for your review and approval is the exclusive property of **Signarama**. It may not be reproduced, copied, exhibited or utilized for any purpose, in part or in whole by any individual inside out outside without written consent of **Signarama**. © Copyright 2003

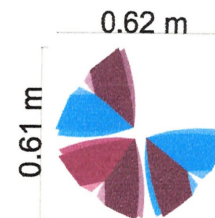
Canopy Sign (C)

1/2" Thick acrylic logo/letters flat
painted installed with pins and Silicone
directly to existing Canopy

Name for Front of Canopy

3.1 m
CHARTwell | VISTA 0.3 m

Logo for
Side of Canopy



■ PMS 5195C
■ PMS 235C
■ PMS 2935C



622 Admirals Rd,
Victoria, BC V9A 2N7

Signarama Tri Cities
302 - 1515 Broadway St.
Port Coquitlam, BC V3C-6M2
604-474-4674

Name: Chartwell
Company:

Phone:
Fax:

E-mail:

Approval:

Comments:

File:

Date: Jan 02, 2024 Time:

Colors:

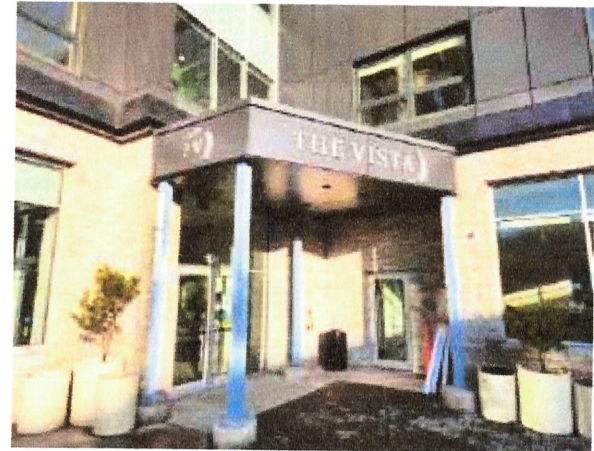
Colours on the proof are for reference only and they may not match the actual graphics. Please, let us know if a colour sample is required. A \$35 per colour sample will apply

Changes:

Please, describe changes to the proof. A new proof will be provided for approval. The first three (3) proof are included in the quoted price. Subsequent changes/proof will be charged at \$ 45 each.

Canopy Sign Mock Up

Actual Picture



Proposed new Sign



This design and drawing submitted for your review and approval is the exclusive property of **Signarama**. It may not be reproduced, copied, exhibited or utilized for any purpose, in part or in whole by any individual inside out outside without written consent of **Signarama**. © Copyright 2003



622 Admirals Rd,
Victoria, BC V9A 2N7

Signarama Tri Cities
302 - 1515 Broadway St.
Port Coquitlam, BC V3C-6M2
604-474-4674

Name: Chartwell
Company:

Phone:
Fax:

E-mail:

Approval:

Comments:

File:

Date: Jan 02, 2024 Time:

Colors:

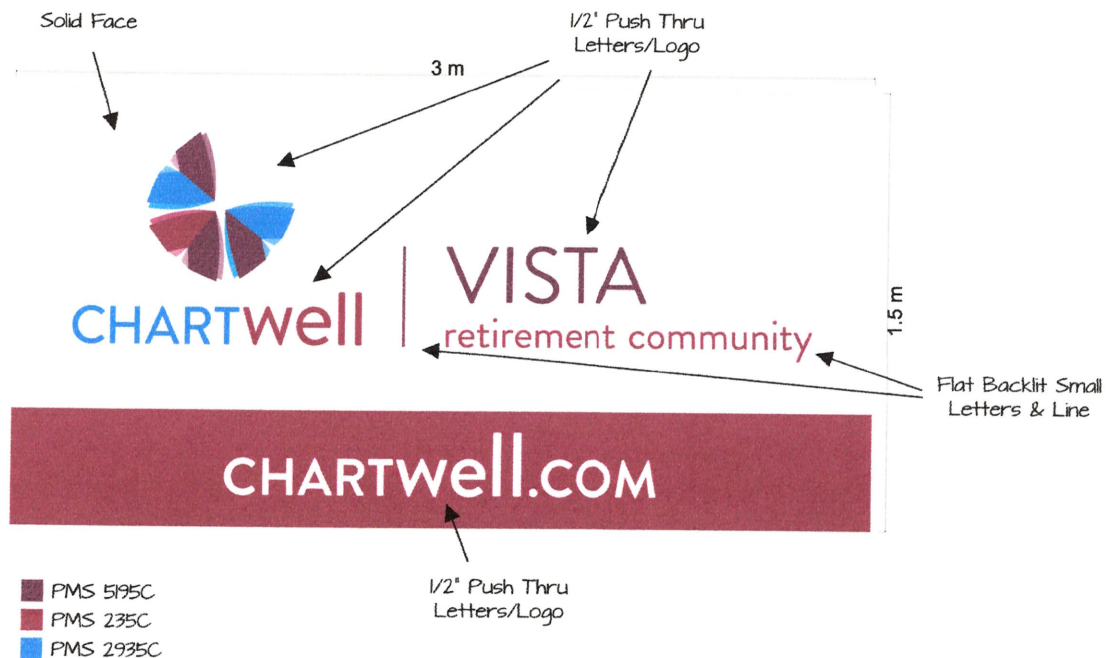
Colours on the proof are for reference only and they may not match the actual graphics. Please, let us know if a colour sample is required. A \$35 per colour sample will apply

Changes:

Please, describe changes to the proof. A new proof will be provided for approval. The first three (3) proof are included in the quoted price. Subsequent changes/proof will be charged at \$ 45 each.

This design and drawing submitted for your review and approval is the exclusive property of **Signarama**. It may not be reproduced, copied, exhibited or utilized for any purpose, in part or in whole by any individual inside out outside without written consent of **Signarama**. © Copyright 2003

Lightbox 1 (LBI)



Lightbox internally-Lit with LEDs with 3mm aluminium composite panel face with logo and letters cutout.

Logo and bigger letter
to be push thru 1/2" thick acrylic while smaller
letters with flat acrylic behind face



622 Admirals Rd,
Victoria, BC V9A 2N7

Signarama Tri Cities
302 - 1515 Broadway St.
Port Coquitlam, BC V3C-6M2
604-474-4674

Name: Chartwell
Company:

Phone:
Fax:

E-mail:

Approval:

Comments:

File:

Date: Jan 02, 2024 Time:

Colors:

Colours on the proof are for reference only
and they may not match the actual graphics.
Please, let us know if a colour sample is
required. A \$35 per colour sample will apply

Changes:

Please, describe changes to the proof. A
new proof will be provided for approval.
The first three (3) proof are included in the
quoted price. Subsequent changes/proof will
be charged at \$ 45 each.

Lightbox 1 (LBI)

Actual Picture



Proposed New Lightbox
(To scale)



This design and drawing submitted for your review and approval is the exclusive property of **Signarama**. It may not be reproduced, copied, exhibited or utilized for any purpose, in part or in whole by any individual inside out outside without written consent of **Signarama**. © Copyright 2003



622 Admirals Rd,
Victoria, BC V9A 2N7

Signarama Tri Cities
302 - 1515 Broadway St.
Port Coquitlam, BC V3C-6M2
604-474-4674

Name: Chartwell
Company:

Phone:
Fax:

E-mail:

Approval:

Comments:

File:

Date: Jan 02, 2024 Time:

Colors:

Colours on the proof are for reference only
and they may not match the actual graphics.
Please, let us know if a colour sample is
required. A \$35 per colour sample will apply

Changes:

Please, describe changes to the proof. A
new proof will be provided for approval.
The first three (3) proof are included in the
quoted price. Subsequent changes/proof will
be charged at \$ 45 each.

Lightbox 1 (LBI) - ELEVATION



Clearance from Ground: 3.0 m
Maximum Height: 4.5 m
Projection from the Wall: 0.15 m

This design and drawing submitted for your review and approval is the exclusive property of **Signarama**. It may not be reproduced, copied, exhibited or utilized for any purpose, in part or in whole by any individual inside out outside without written consent of **Signarama**. © Copyright 2003



622 Admirals Rd,
Victoria, BC V9A 2N7

Signarama Tri Cities
302 - 1515 Broadway St.
Port Coquitlam, BC V3C-6M2
604-474-4674

Name: Chartwell
Company:

Phone:
Fax:

E-mail:

Approval:

Comments:

File:

Date: Jan 02, 2024 Time:

Colors:

Colours on the proof are for reference only
and they may not match the actual graphics.
Please, let us know if a colour sample is
required. A \$35 per colour sample will apply

Changes:

Please, describe changes to the proof. A
new proof will be provided for approval.
The first three (3) proof are included in the
quoted price. Subsequent changes/proof will
be charged at \$ 45 each.

Lightbox I (LBI) - Sign Area



Sign Area: 4.5 m²
Copy Area: 1.64 m² (36%)

This design and drawing submitted for your review and approval is the exclusive property of **Signarama**. It may not be reproduced, copied, exhibited or utilized for any purpose, in part or in whole by any individual inside out outside without written consent of **Signarama**. © Copyright 2003



622 Admirals Rd,
Victoria, BC V9A 2N7

Signarama Tri Cities
302 - 1515 Broadway St.
Port Coquitlam, BC V3C-6M2
604-474-4674

Name: Chartwell
Company:

Phone:
Fax:

E-mail:

Approval:

Comments:

File:

Date: Jan 02, 2024 Time:

Colors:

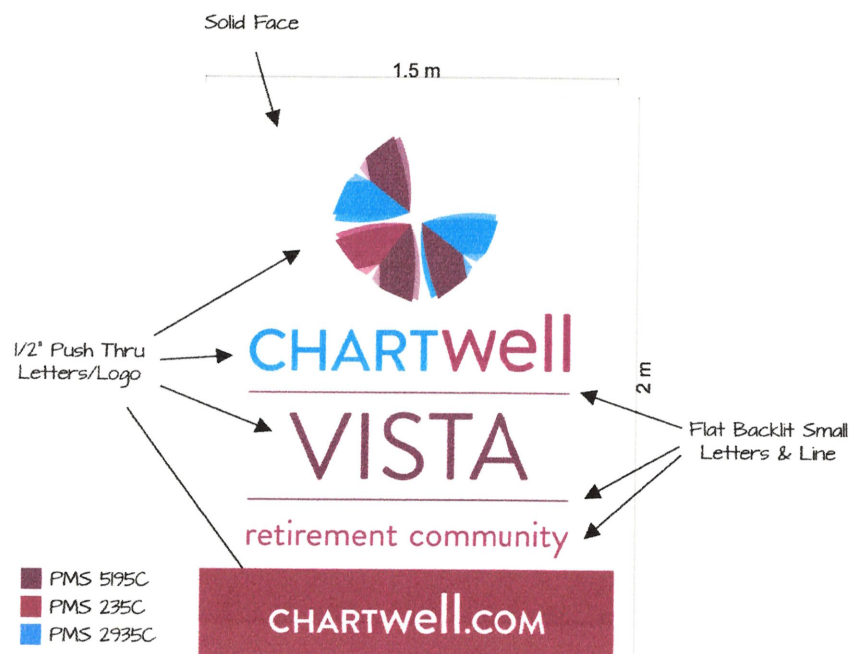
Colours on the proof are for reference only and they may not match the actual graphics. Please, let us know if a colour sample is required. A \$35 per colour sample will apply

Changes:

Please, describe changes to the proof. A new proof will be provided for approval. The first three (3) proof are included in the quoted price. Subsequent changes/proof will be charged at \$ 45 each.

This design and drawing submitted for your review and approval is the exclusive property of **Signarama**. It may not be reproduced, copied, exhibited or utilized for any purpose, in part or in whole by any individual inside out outside without written consent of **Signarama**. © Copyright 2003

Lightbox 2 (LB2)



Lightbox internally-Lit with LEDs with 3mm aluminium composite panel face with logo and letters cutout.

Logo and bigger letter
to be push thru 1/2" thick acrylic while smaller
letters with flat acrylic behind face



622 Admirals Rd,
Victoria, BC V9A 2N7

Signarama Tri Cities
302 - 1515 Broadway St.
Port Coquitlam, BC V3C-6M2
604-474-4674

Name: Chartwell
Company:

Phone:
Fax:

E-mail:

Approval:

Comments:

File:

Date: Jan 02, 2024 Time:

Colors:

Colours on the proof are for reference only
and they may not match the actual graphics.
Please, let us know if a colour sample is
required. A \$35 per colour sample will apply

Changes:

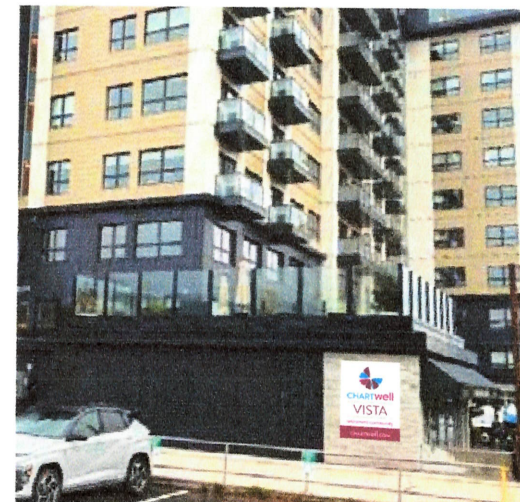
Please, describe changes to the proof. A
new proof will be provided for approval.
The first three (3) proof are included in the
quoted price. Subsequent changes/proof will
be charged at \$ 45 each.

Lightbox 2 (LB2)

Actual Picture



Proposed New Lightbox
(To scale)



This design and drawing submitted for your review and approval is the exclusive property of **Signarama**. It may not be reproduced, copied, exhibited or utilized for any purpose, in part or in whole by any individual inside out outside without written consent of **Signarama**. © Copyright 2003



622 Admirals Rd,
Victoria, BC V9A 2N7

Signarama Tri Cities
302 - 1515 Broadway St.
Port Coquitlam, BC V3C-6M2
604-474-4674

Name: Chartwell
Company:

Phone:
Fax:

E-mail:

Approval:

Comments:

File:

Date: Jan 02, 2024 Time:

Colors:

Colours on the proof are for reference only
and they may not match the actual graphics.
Please, let us know if a colour sample is
required. A \$35 per colour sample will apply

Changes:

Please, describe changes to the proof. A
new proof will be provided for approval.
The first three (3) proof are included in the
quoted price. Subsequent changes/proof will
be charged at \$ 45 each.

Lightbox 2 (LB2) - ELEVATION



Clearance from Ground: 1.75 m
(No sidewalk or walking traffic)
Maximum Height: 3.75 m
Projection from the Wall: 0.15 m

This design and drawing submitted for your review and approval is the exclusive property of **Signarama**. It may not be reproduced, copied, exhibited or utilized for any purpose, in part or in whole by any individual inside out outside without written consent of **Signarama**. © Copyright 2003



622 Admirals Rd,
Victoria, BC V9A 2N7

Signarama Tri Cities
302 - 1515 Broadway St.
Port Coquitlam, BC V3C-6M2
604-474-4674

Name: Chartwell
Company:

Phone:
Fax:

E-mail:

Approval:

Comments:

File:

Date: Jan 02, 2024 Time:

Colors:

Colours on the proof are for reference only and they may not match the actual graphics. Please, let us know if a colour sample is required. A \$35 per colour sample will apply

Changes:

Please, describe changes to the proof. A new proof will be provided for approval. The first three (3) proof are included in the quoted price. Subsequent changes/proof will be charged at \$ 45 each.

Lightbox 2 (LB2) - Sign Area



Sign Area: 3.0 m²
Copy Area: 0.94 m² (31%)

This design and drawing submitted for your review and approval is the exclusive property of **Signarama**. It may not be reproduced, copied, exhibited or utilized for any purpose, in part or in whole by any individual inside out outside without written consent of **Signarama**. © Copyright 2003



622 Admirals Rd,
Victoria, BC V9A 2N7

Signarama Tri Cities
302 - 1515 Broadway St.
Port Coquitlam, BC V3C-6M2
604-474-4674

Name: Chartwell
Company:

Phone:
Fax:

E-mail:

Approval:

Comments:

File:

Date: Jan 02, 2024 Time:

Colors:

Colours on the proof are for reference only and they may not match the actual graphics. Please, let us know if a colour sample is required. A \$35 per colour sample will apply

Changes:

Please, describe changes to the proof. A new proof will be provided for approval. The first three (3) proof are included in the quoted price. Subsequent changes/proof will be charged at \$ 45 each.

Banner (B)

Full colour graphics on 113oz banner stock with edges folded and grommets every 2 feet



■ PMS 5195C
■ PMS 235C
■ PMS 2935C

This design and drawing submitted for your review and approval is the exclusive property of **Signarama**. It may not be reproduced, copied, exhibited or utilized for any purpose, in part or in whole by any individual inside out outside without written consent of **Signarama**. © Copyright 2003



622 Admirals Rd,
Victoria, BC V9A 2N7

Signarama Tri Cities
302 - 1515 Broadway St.
Port Coquitlam, BC V3C-6M2
604-474-4674

Name: Chartwell
Company:

Phone:
Fax:

E-mail:

Approval:

Comments:

File:

Date: Jan 02, 2024 Time:

Colors:

Colours on the proof are for reference only and they may not match the actual graphics. Please, let us know if a colour sample is required. A \$35 per colour sample will apply

Changes:

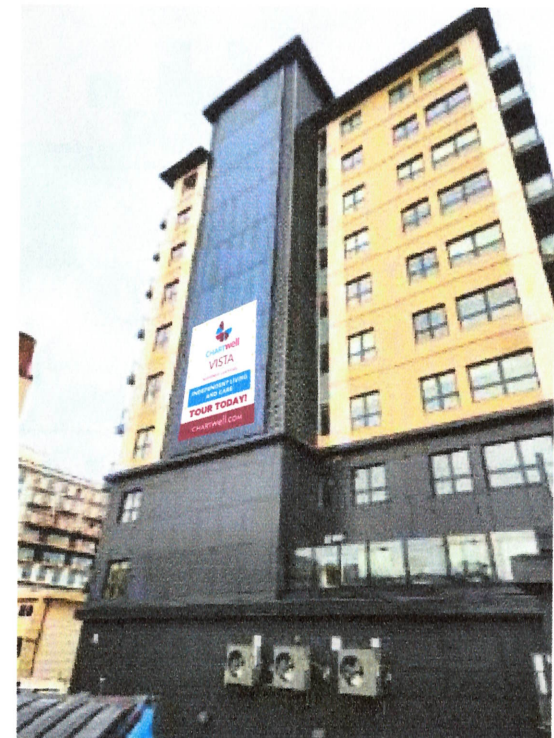
Please, describe changes to the proof. A new proof will be provided for approval. The first three (3) proof are included in the quoted price. Subsequent changes/proof will be charged at \$ 45 each.

Banner (B)

Actual Picture



Proposed
New banner



This design and drawing submitted for your review and approval is the exclusive property of **Signarama**. It may not be reproduced, copied, exhibited or utilized for any purpose, in part or in whole by any individual inside out outside without written consent of **Signarama**. © Copyright 2003