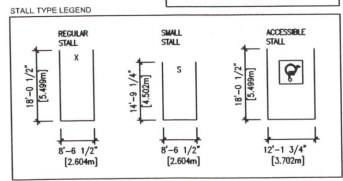


ELEVATOR #	SHWT SIZING
ELEVATOR # 1	75' x 100' (1811mm x 2768mm)
ELEVATOR # 3	72' x 100' (1827mm x 2768mm)
ELEVATOR # 4	75' x 100' (1811mm x 2768mm)
ELEVATOR # 5	72' x 100' (1827mm x 2768mm)

\*PER SUPPLIER CONFIRMATION, SEPT 15, 2021

- GENERAL LEGEND**
- RAMP DOWN - RAMP WITH CONCRETE CHEVRONS @ 8" O.C.
  - RAMP DOWN - RAMP - NO CHEVRONS
  - CATCH BASIN, MEAS. FLOOR DEPTH / TRENCH - SEE MECHANICAL
  - TRAVEL DISTANCE
  - SECURITY FENCE
  - CORE WALL
  - CMU WALL
  - DROPPED CEILING

- FIRE SEPARATION LEGEND**
- SMOKE/CO RATING
  - ONE HOUR RATED FIRE SEPARATION
  - ONE AND ONE HALF HOUR RATED FIRE SEPARATION
  - TWO HOUR RATED FIRE SEPARATION
  - CURTAIN OF FIRE RATED SEISMIC JOINT AT FLOOR/ROOF ASSEMBLY ABOVE



1 P1 PLAN  
A2.01 SCALE: 1/32" = 1'-0"

1 2022.01.07 PARKING VARIANCE APPLICATION  
No. Date Revision



English Inn  
429 Lampion Street  
Victoria, BC  
For  
Aragon (Lampion) Properties Ltd.

P1 PLAN

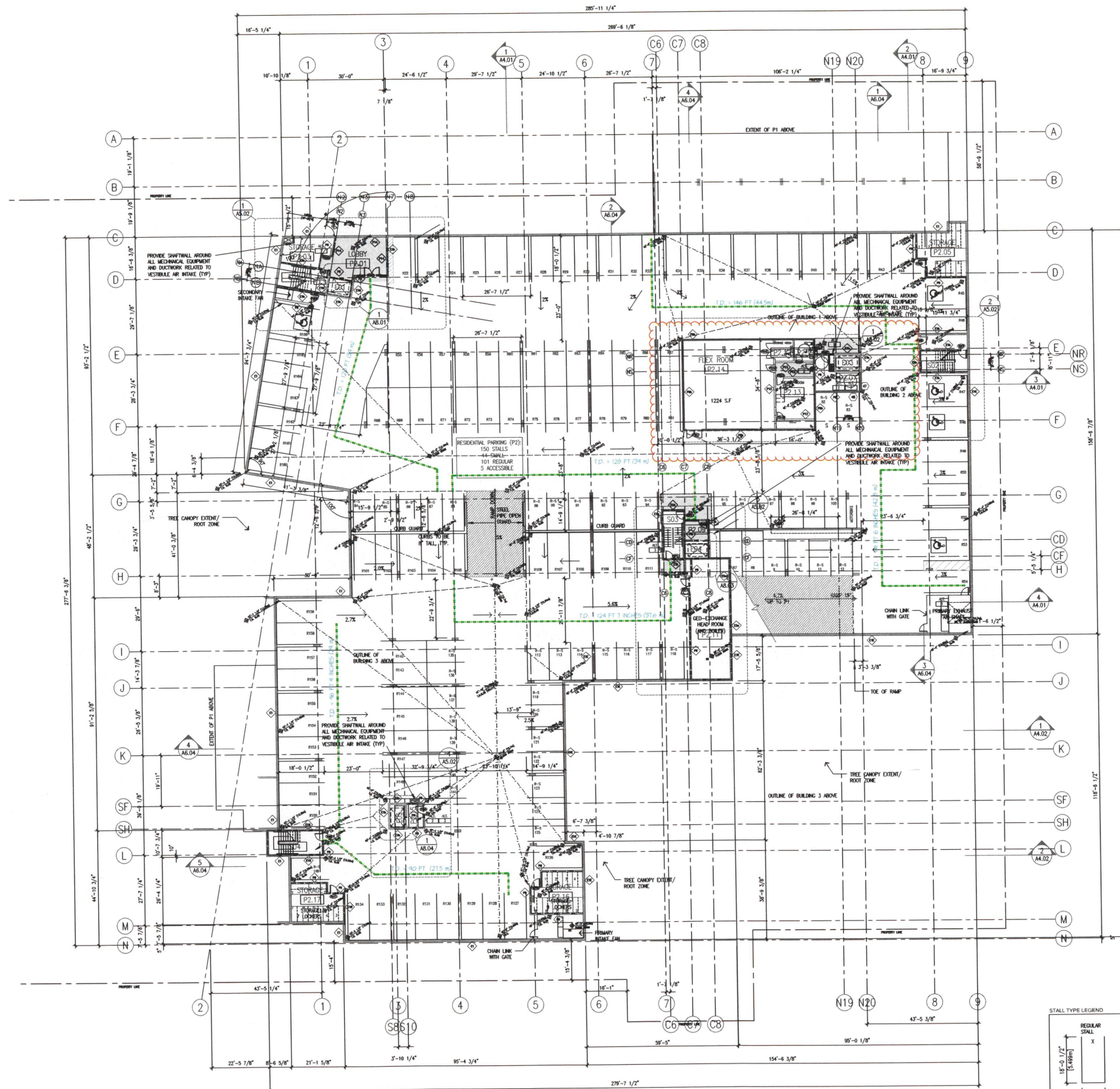
AS NOTED

SD RI RI



18136

A2.01

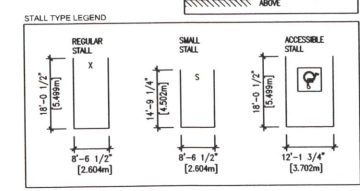


ELEVATOR #	SWIFT SIZING
ELEVATOR # 1	75' 3" x 109" (1911mm x 2769mm)
ELEVATOR # 3	72' 2" x 109" (1829mm x 2769mm)
ELEVATOR # 4	75' 3" x 109" (1911mm x 2769mm)
ELEVATOR # 5	72' 2" x 109" (1829mm x 2769mm)

PER SUPPLIER CONFIRMATION, SEPT 15, 2021

- GENERAL LEGEND**
- RAMP DOWN: RAMP WITH CONCRETE CHEVRONS @ 8" O.C.
  - RAMP DOWN: RAMP - NO CHEVRONS
  - CATCH BASIN AREA/FLOOR DRAIN / TRENCH - SEE MECHANICAL
  - TRAVEL DISTANCE
  - SECURITY FENCE
  - OP WALL
  - CMU WALL
  - DROPPED CEILING

- FIRE SEPARATION LEGEND**
- SMOKE/CO RATING
  - ONE HOUR RATED FIRE SEPARATION
  - ONE AND ONE HALF HOUR RATED FIRE SEPARATION
  - TWO HOUR RATED FIRE SEPARATION
  - EXTENT OF FIRE RATED SEPARATION AT FLOOR/ROOF ASSEMBLY ABOVE



1	2022.01.07	PARKING VARIANCE APPLICATION
No.	Date	Revision

English Inn  
429 Lamson Street  
Victoria, BC  
For  
Aragon (Lamson) Properties Ltd.

P2 PLAN

AS NOTED

SD	RI	RI
----	----	----

18136

1 P2 PLAN  
A2.02 SCALE: 1/32"=1'-0"

Note: Blindformed walls as per Geotechnical excavations plans



18136