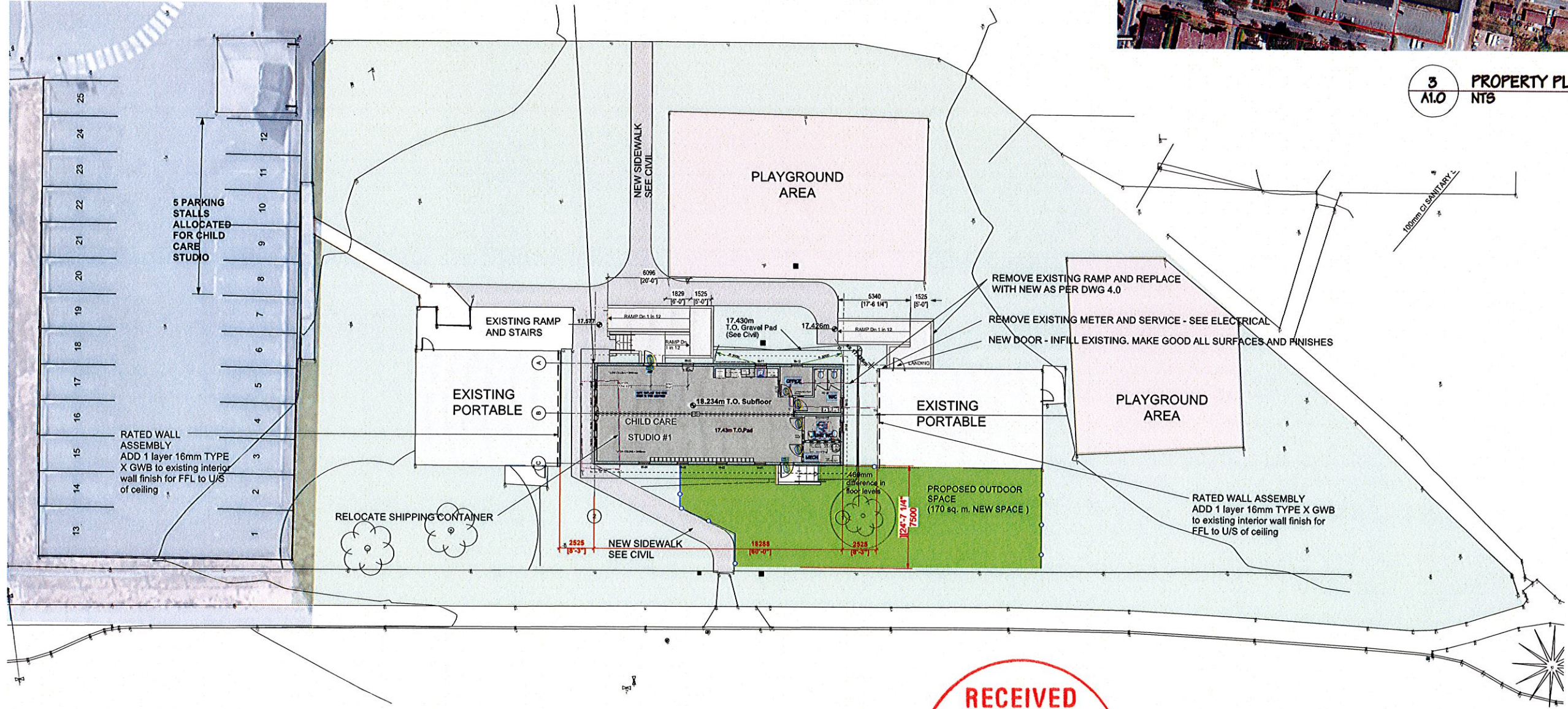


2 KEY PLAN
A1.0 NTS



3 PROPERTY PLAN
A1.0 NTS



1 SITE PLAN
A1.0 1:150

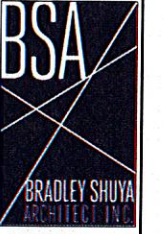
RECEIVED
AUG 14 2019
CORP. OF TOWNSHIP OF ESQUIMALT
DEVELOPMENT SERVICES



REVISIONS	
3	Update Parking
2	ISSUED FOR BP
1	ISSUED FOR SP

Greater Victoria School District
École Macaulay Elementary School
 1010 Wychbury Ave., Victoria, BC, V9A 5K6
 NEW CHILD CARE STUDIO - ISSUED FOR BP AMENDMENT

The design and drawings prepared by the architect are instruments of service for the execution of the work shown and are the property of the architect. The contractor shall verify all dimensions and conditions of the project and be responsible for reporting any variations from dimensions and conditions shown on the drawing to the architect for adjustment prior to commencement.



762 Ralph St., Victoria B.C.
 P. 250.727.0605 • F. 250.727.0636
 brad@bradleysshuyarchitect.com
 www.bradleysshuyarchitect.com

SITE PLAN	
Date	Aug. 14, 2019
Scale	AS NOTED
Drawn	AF
Job	18-18C
Sheet	A1.0