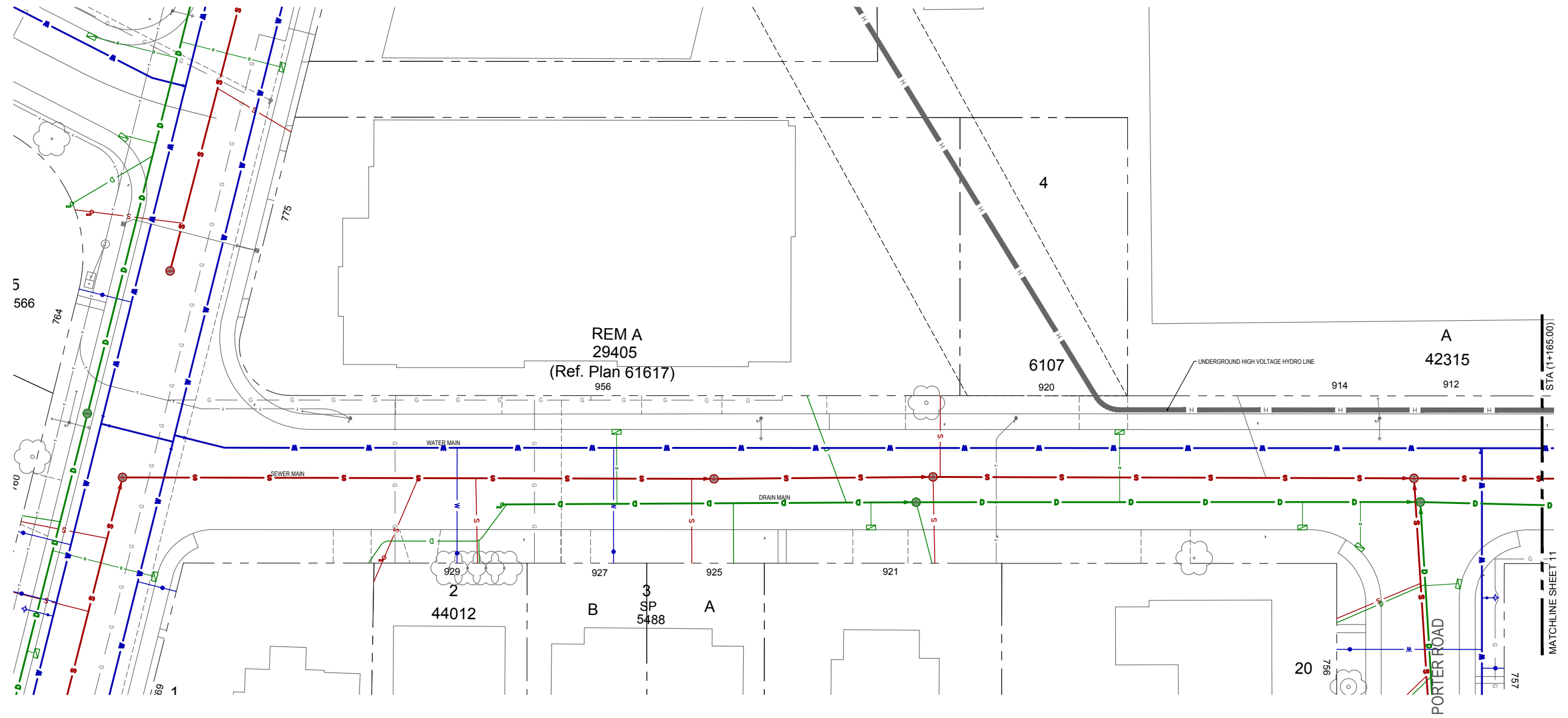
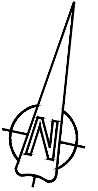


DISCLAIMER:
 LOCATION OF UTILITIES SHOWN ARE APPROXIMATE ONLY AND SHOULD BE CONFIRMED BY FIELD SURVEY AND BY USE OF A PIPE LOCATOR AND MANUAL DIGGINGS WHERE REQUIRED. EXISTING SERVICE LOCATIONS ARE SHOWN TO INDICATE THE EXISTENCE OF THE SPECIFIED SERVICE ONLY AND ARE NOT NECESSARILY COMPLETE OR SHOWN IN THE CORRECT LOCATION. IT IS THE CONTRACTOR'S RESPONSIBILITY TO LOCATE, VERIFY THE INVERT ELEVATIONS BY HAND EXCAVATION BEFORE CONSTRUCTION OF THE UTILITY CROSSING AND SHALL BE RESPONSIBLE FOR ADEQUATE PROTECTION FROM DAMAGE AT CONTRACTOR'S COST



CONFIRM UNDERGROUND LOCATIONS WITH UTILITY COMPANIES

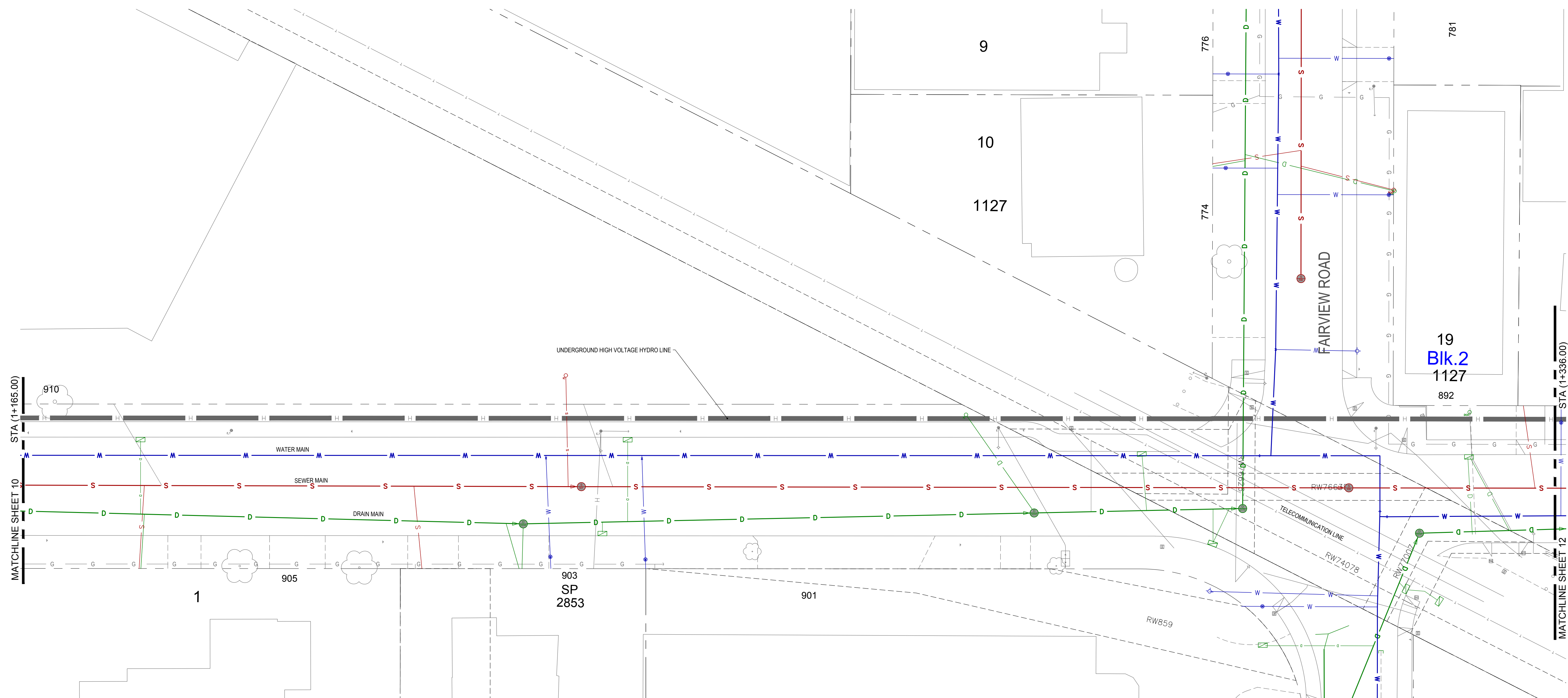
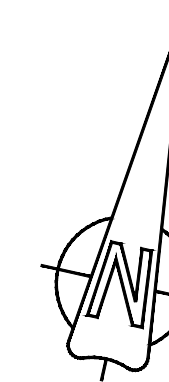
| LEGEND - Existing services shown solid | |
|--|----------------|
| CABLE —TV— | SIDEWALK S/W |
| DRAIN —D— | TREE |
| GAS —GAS— | DRAIN MANHOLE |
| SEWER —S— | GAS VALVE |
| WATER —W— | SEWER MANHOLE |
| ELECTRICAL —E— | WATER VALVE |
| ELECTRIC POLE | CATCH BASIN |
| TEL POLE | GAS SNIFFER |
| SURVEY MONUMENT | GAS METER |
| IRON PIN | SEWER LAMPHOLE |
| LEAD PLUG | SEWER CLEANOUT |
| TRAVERSE HUB | SEWER VENT |
| P.K. NAIL | SEWER CLEANOUT |
| | WATER METER |
| | SERVICE VALVE |

| REVISIONS | REVISIONS APPROVED | | | | | | | | |
|-------------------|--------------------|------|------|------------|------|------|------------|------|------|
| | REVISION 1 | | | REVISION 2 | | | REVISION 3 | | |
| ISSUED FOR REVIEW | APP. | DATE | SIGN | APP. | DATE | SIGN | APP. | DATE | SIGN |
| | | | | | | | | | |

| DESIGN APPROVED | | | TOWNSHIP OF ESQUIMALT | | |
|-----------------|----------|------|--|-----------|-----------------|
| EXCEPTIONS | DATE | SIGN | DEVONSHIRE ROAD INVESTIGATIVE WORK | | |
| APPROVED BY | 17.02.10 | WW | COMBINED UTILITIES STA (1+033.10 - 1+165.00) | | |
| DESIGN ENG. | | | CONTROL MONUMENTS | | |
| ASSIST. ENG. | | | DESIGN EFS | DRAWN EFS | SURVEY HH |
| MUNICIPAL ENG. | | | SCALES: H=1:250 | | DATE 2017.02.10 |

| | |
|-----------------|----------|
| DESIGN DWG. NO. | ESQ-M300 |
| Sheet # | 10 |

DISCLAIMER:
 LOCATION OF UTILITIES SHOWN ARE APPROXIMATE ONLY AND SHOULD BE CONFIRMED BY FIELD SURVEY AND BY USE OF A PIPE LOCATOR AND MANUAL DIGGING WHERE REQUIRED. EXISTING SERVICE LOCATIONS ARE SHOWN TO INDICATE THE EXISTENCE OF THE SPECIFIED SERVICE ONLY AND ARE NOT NECESSARILY COMPLETE OR SHOWN IN THE CORRECT LOCATION. IT IS THE CONTRACTOR'S RESPONSIBILITY TO LOCATE, VERIFY THE INVERT ELEVATIONS BY HAND EXCAVATION BEFORE CONSTRUCTION OF THE UTILITY CROSSING AND SHALL BE RESPONSIBLE FOR ADEQUATE PROTECTION FROM DAMAGE AT CONTRACTOR'S COST



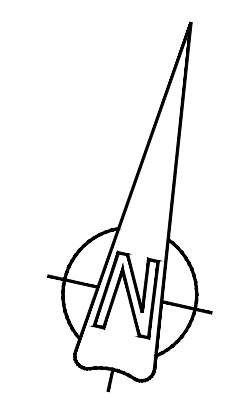
CONFIRM UNDERGROUND LOCATIONS WITH UTILITY COMPANIES

| LEGEND - Existing services shown solid | | | | | |
|--|---------------|----------------|--------------------|---------------|-----------------|
| CABLE —TV— | SIDEWALK S/W | TREE | ELECTRIC POLE E | TEL. POLE T | SURVEY MONUMENT |
| DRAIN —D— | DRAIN MANHOLE | CATCH BASIN | DRAIN CLEANOUT DCO | DRAIN VENT DV | IRON PIN IP |
| GAS —GAS— | GAS VALVE | GAS SNIFFER | GAS METER | STREET LIGHT | LEAD PLUG LP |
| SEWER —S— | SEWER MANHOLE | SEWER LAMPHOLE | SEWER CLEANOUT SCO | SEWER VENT SV | TRAVERSE HUB TH |
| WATER —W— | WATER VALVE | FIRE HYDRANT | WATER METER | SERVICE VALVE | P.K. NAIL PK |

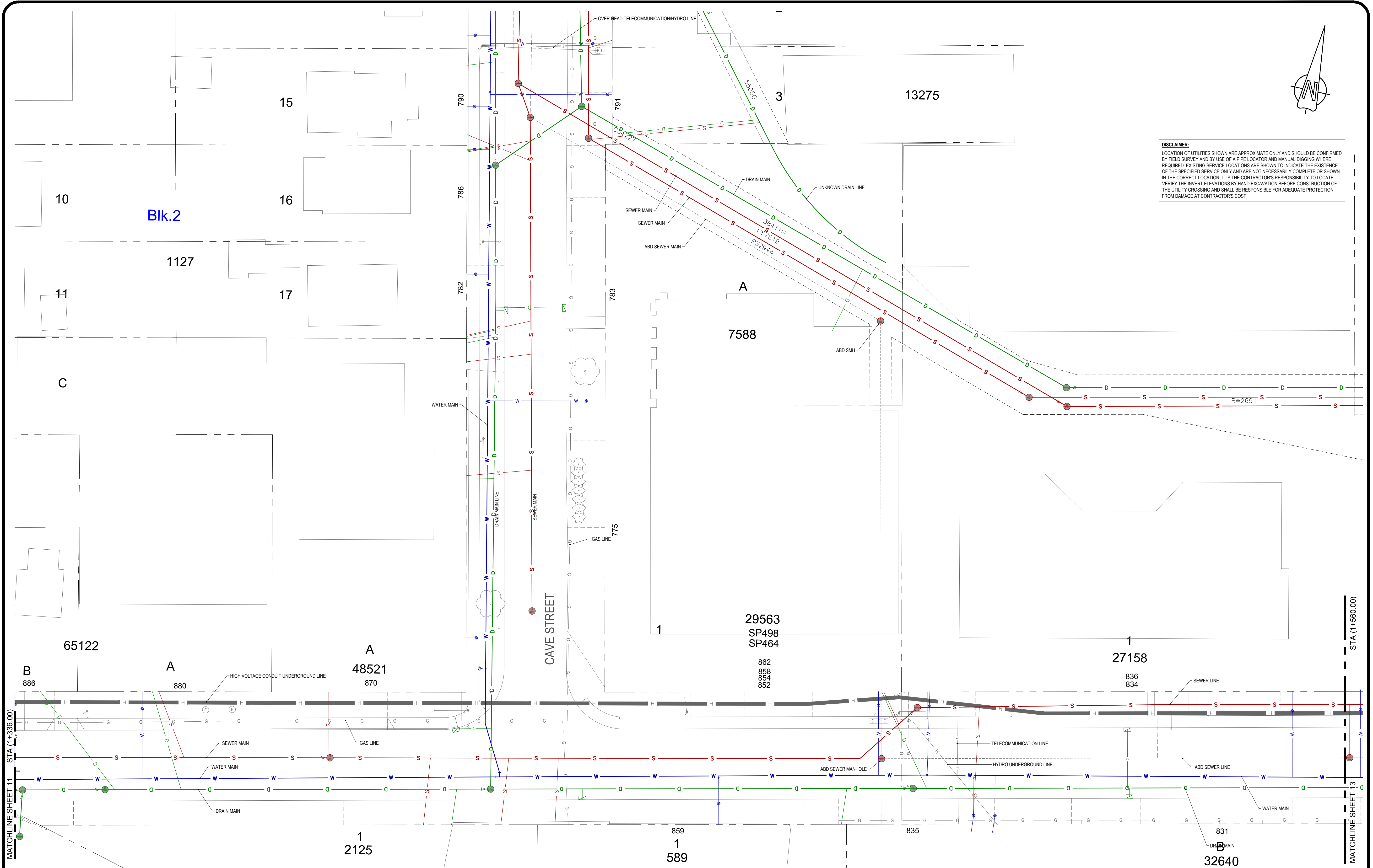
| REVISIONS | | REVISIONS APPROVED | | | | | |
|-------------------|------|--------------------|------|------------|------|------------|------|
| | | REVISION 1 | | REVISION 2 | | REVISION 3 | |
| APP. | DATE | APP. | DATE | APP. | DATE | APP. | DATE |
| ISSUED FOR REVIEW | | | | | | | |

| DESIGN APPROVED | | | TOWNSHIP OF ESQUIMALT | | |
|-----------------|----------|------|--|-----------|-----------------|
| EXCEPTIONS | DATE | SIGN | DEVONSHIRE ROAD INVESTIGATIVE WORK | | |
| APPROVED BY | 17.02.10 | WW | COMBINED UTILITIES STA (1+165.00 - 1+336.00) | | |
| DESIGN ENG. | | | CONTROL MONUMENTS | | |
| ASSIST. ENG. | | | DESIGN EFS | DRAWN EFS | SURVEY HH |
| MUNICIPAL ENG. | | | SCALES: H=1:250 | | DATE 2017.02.10 |

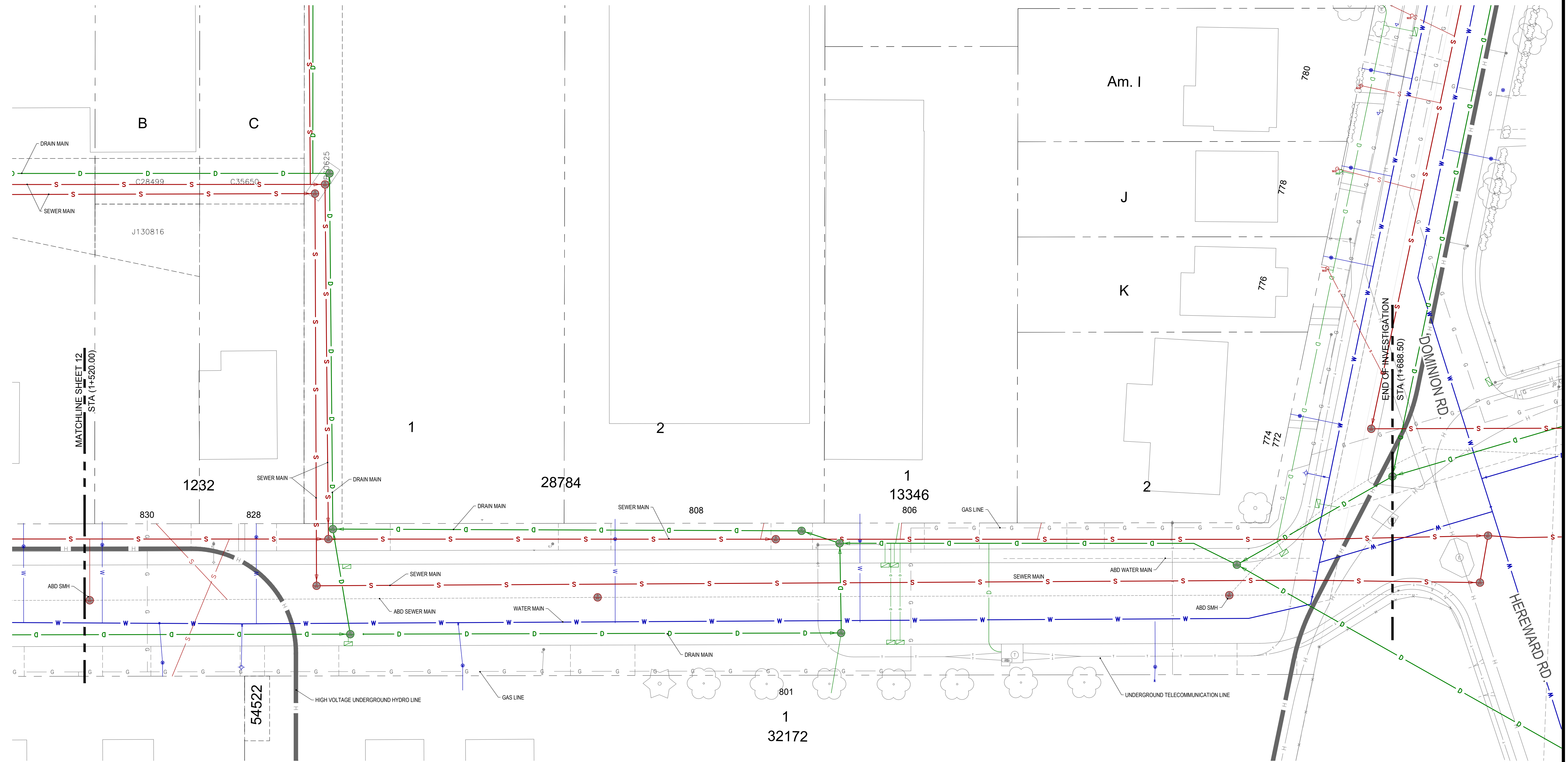
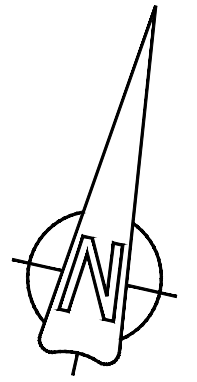
| | |
|-----------------|----------|
| DESIGN DWG. NO. | ESQ-M301 |
| Sheet # | 11 |



DISCLAIMER:
 LOCATION OF UTILITIES SHOWN ARE APPROXIMATE ONLY AND SHOULD BE CONFIRMED BY FIELD SURVEY AND BY USE OF A PIPE LOCATOR AND MANUAL DIGGING WHERE REQUIRED. EXISTING SERVICE LOCATIONS ARE SHOWN TO INDICATE THE EXISTENCE OF THE SPECIFIED SERVICE ONLY AND ARE NOT NECESSARILY COMPLETE OR SHOWN IN THE CORRECT LOCATION. IT IS THE CONTRACTOR'S RESPONSIBILITY TO LOCATE, VERIFY THE INVERT ELEVATIONS BY HAND EXCAVATION BEFORE CONSTRUCTION OF THE UTILITY CROSSING AND SHALL BE RESPONSIBLE FOR ADEQUATE PROTECTION FROM DAMAGE AT CONTRACTOR'S COST



| | | | | | | | | | | | | | | | | | | | | | | | | | | | |
|---|---|-----|---------------|----------------|--------------------|---------------|-----------------|-------|---------------|-------------|--------------------|------------------------|-------------------|---------------------------|------------|------------|------------------------|----------|------|--|--|------------------------------------|--|---------|--|-----------|--|
| CONFIRM UNDERGROUND LOCATIONS WITH UTILITY COMPANIES | LEGEND - Existing services shown solid | | | | | | | | | | REVISIONS | | | REVISIONS APPROVED | | | DESIGN APPROVED | | | TOWNSHIP OF ESQUIMALT DEVONSHIRE ROAD INVESTIGATIVE WORK COMBINED UTILITIES STA (1+336.00 - 1+520.00) | | DESIGN DWG. NO. ESQ-M300 | | | | | |
| | CABLE —TV— | —D— | SIDEWALK S/W | TREE | ELECTRIC POLE E | TEL POLE | SURVEY MONUMENT | —GAS— | DRAIN MANHOLE | CATCH BASIN | DRAIN CLEANOUT DCO | DRAIN VENT | IRON PIN | REVISION 1 | REVISION 2 | REVISION 3 | EXCEPTIONS | DATE | SIGN | | | | | | | | |
| | SEWER —S— | —W— | SEWER MANHOLE | SEWER LAMPHOLE | SEWER CLEANOUT SCO | SEWER VENT | TRVERSE HUB | —GAS— | GAS VALVE | GAS SNIFFER | GAS METER | STREET LIGHT | LEAD PLUG | APP. | DATE | SIGN | APPROVED BY | 17.02.10 | WW | | | | | | | | |
| | WATER —W— | —E— | WATER VALVE | FIRE HYDRANT | WATER METER | SERVICE VALVE | P.K. NAIL | SEWER | WATER | ELECTRICAL | TELECOMMUNICATION | HYDRO UNDERGROUND LINE | ABD SEWER MANHOLE | APP. | DATE | SIGN | DESIGN ENG. | | | | | | | | | | |
| | | | | | | | | | | | | | | | | | | | | SCALES: H=1:250 | | DATE 2017.02.10 | | SHEET # | | 12 | |



DISCLAIMER:
 LOCATION OF UTILITIES SHOWN ARE APPROXIMATE ONLY AND SHOULD BE CONFIRMED BY FIELD SURVEY AND BY USE OF A PIPE LOCATOR AND MANUAL DIGGINGS WHERE REQUIRED. EXISTING SERVICE LOCATIONS ARE SHOWN TO INDICATE THE EXISTENCE OF THE SPECIFIED SERVICE ONLY AND ARE NOT NECESSARILY COMPLETE OR SHOWN IN THE CORRECT LOCATION. IT IS THE CONTRACTOR'S RESPONSIBILITY TO LOCATE, VERIFY THE INVERT ELEVATIONS BY HAND EXCAVATION BEFORE CONSTRUCTION OF THE UTILITY CROSSING AND SHALL BE RESPONSIBLE FOR ADEQUATE PROTECTION FROM DAMAGE AT CONTRACTOR'S COST.

| | | | | | | | | | | | | | | | | | | | | | | | | | | | | | | |
|---|---|----------------|--------------------|--------------------|-----------------|-------------------|------------|------------|------------|------------|------------------|----------------|-------------|------------|-------------------|----------------|---------------------------|------|--|--|--|--|------------------------|--|--|---|--|--|--|---|
| CONFIRM UNDERGROUND LOCATIONS WITH UTILITY COMPANIES | LEGEND - Existing services shown solid | | | | | | | | | | REVISIONS | | | | | | REVISIONS APPROVED | | | | | | DESIGN APPROVED | | | TOWNSHIP OF ESQUIMALT DEVONSHIRE ROAD INVESTIGATIVE WORK COMBINED UTILITIES STA (1+520-1+688.50) | | | | DESIGN DWG. NO. ESQ-M303 Sheet # 13 |
| | CABLE —TV— | SIDEWALK S/W | TREE | ELECTRIC POLE E | TEL POLE T | SURVEY MONUMENT | REVISION 1 | REVISION 2 | REVISION 3 | EXCEPTIONS | DATE | SIGN | DESIGN ENG. | DESIGN EFS | DRAWN EFS | SURVEY HH | DATE 2017.02.10 | | | | | | | | | | | | | |
| | DRAIN —D— | DRAIN MANHOLE | CATCH BASIN | DRAIN CLEANOUT DCO | DRAIN VENT DV | IRON PIN IP | APP. | DATE | SIGN | APP. | DATE | SIGN | APP. | DATE | SIGN | APP. | DATE | SIGN | | | | | | | | | | | | |
| GAS —GAS— | GAS VALVE | GAS SNIFFER | GAS METER | STREET LIGHT | LEAD PLUG LP | ISSUED FOR REVIEW | | | | | | APPROVED BY | 17.02.10 | WW | CONTROL MONUMENTS | SCALE: H=1:250 | | | | | | | | | | | | | | |
| SEWER —S— | SEWER MANHOLE | SEWER LAMPHOLE | SEWER CLEANOUT SCO | SEWER VENT SV | TRAVERSE HUB TH | | | | | | | ASSIST. ENG. | | | | | | | | | | | | | | | | | | |
| WATER —W— | WATER VALVE | FIRE HYDRANT | WATER METER | SERVICE VALVE | P.K. NAIL PK | | | | | | | MUNICIPAL ENG. | | | | | | | | | | | | | | | | | | |