

ARCHIE BROWNING SPORTS CENTRE CHILLER REPLACEMENT



REVISION - RECORD			
No.	DATE	DESCRIPTION	BY
1	09MAR18	ISSUED FOR TENDER	KH



CLIENT:

**ROCKY POINT
ENGINEERING LTD.**
 Vancouver • Langley • Victoria • Nanaimo • Kelowna • Kamloops • Nelson
 VICTORIA OFFICE: #202 - 1701 ISLAND HIGHWAY VICTORIA, BC V9B 1J1
 www.rpeing.ca
 ph. 778-400-9825

SEAL:

PROJECT STATUS:
**RECORD
DRAWING**

COPYRIGHT RESERVED:
 Everything shown herein is for use on this project only and may not be reproduced without the written permission of ROCKY POINT ENGINEERING LTD. and unless the reproduction carries their name.

PROJECT TITLE:
**ARCHIE BROWNING
CHILLER
REPLACEMENT**

CLIENT:
**TOWNSHIP OF
ESQUIMALT**

DRAWING TITLE:
COVER SHEET

PROJECT NUMBER:
18080-S

DRAWN: SL/RB
 DESIGNED: KH
 CHECKED: KH
 DATE: 01 Feb 19
 SCALE:

DRAWING NUMBER:
M-0

CONSULTANTS:

MECHANICAL:

ROCKY POINT ENGINEERING LTD.
 #202-1701 ISLAND HIGHWAY
 VICTORIA, BC V9B 1J1
 TEL: (778) 400 9825

ELECTRICAL:

AES ENGINEERING
 #300-1815 BLANSHARD ST.
 VICTORIA, BC V8T 5A4
 TEL: (250) 381 6811

STRUCTURAL:

HEROLD ENGINEERING LIMITED
 1051 VANCOUVER ST.
 VICTORIA, BC V8V 4T6
 TEL: (250) 590 4875

DRAWING INDEX:

MECHANICAL:

- M-0: COVER SHEET
- M-1: CHILLER ROOM DEMOLITION
- M-2: CHILLER ROOM NEW WORK
- M-3: MECHANICAL SCHEMATIC - DEMOLITION
- M-4: MECHANICAL SCHEMATIC - NEW WORK
- M-5: CHILLER ROOM 3D VIEWS
- M-6: MECHANICAL DETAILS & PHOTOS

ELECTRICAL:

E-1: ELECTRICAL PLANS AND DETAILS

STRUCTURAL:

S-1: STRUCTURAL PLANS AND DETAILS

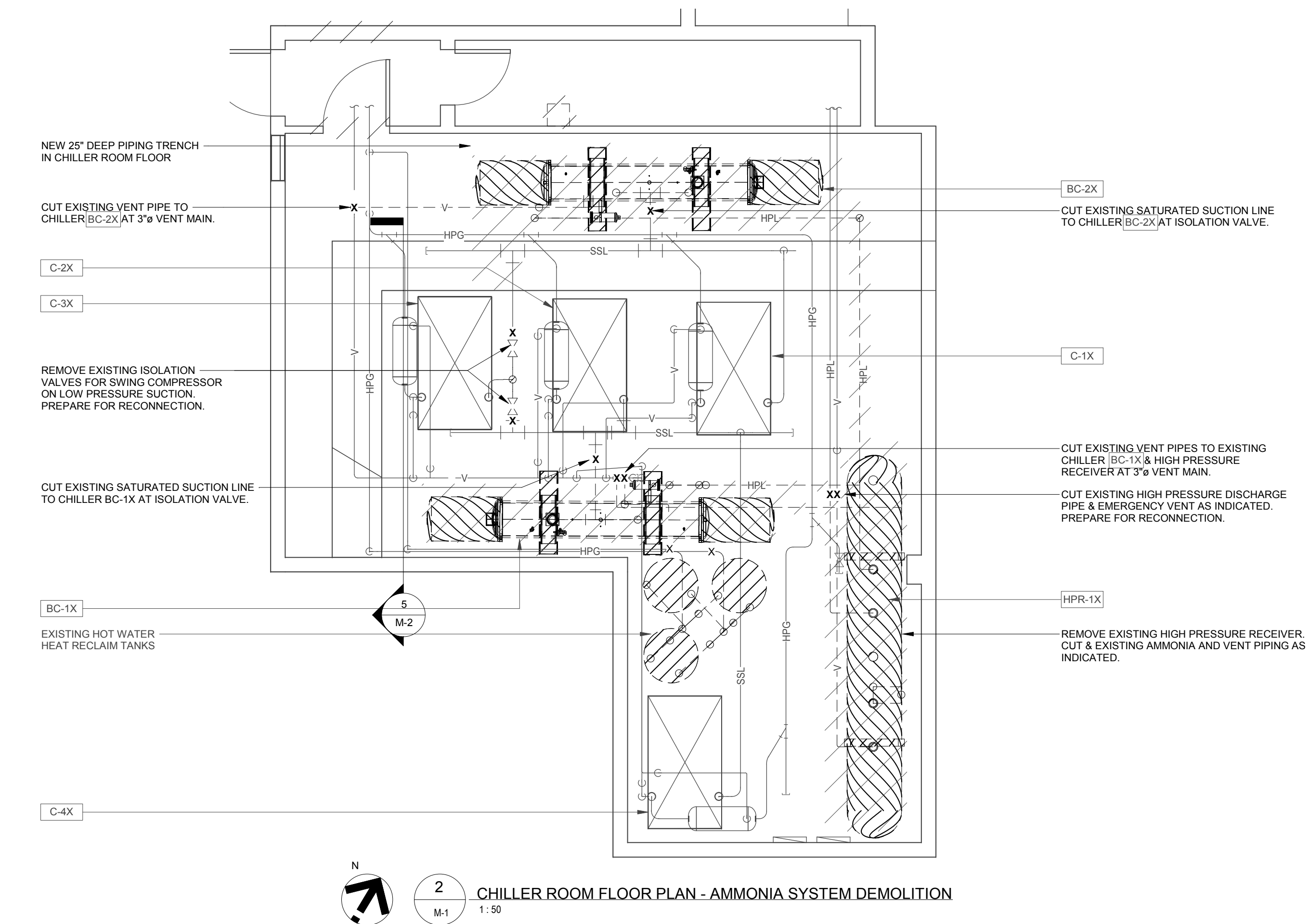
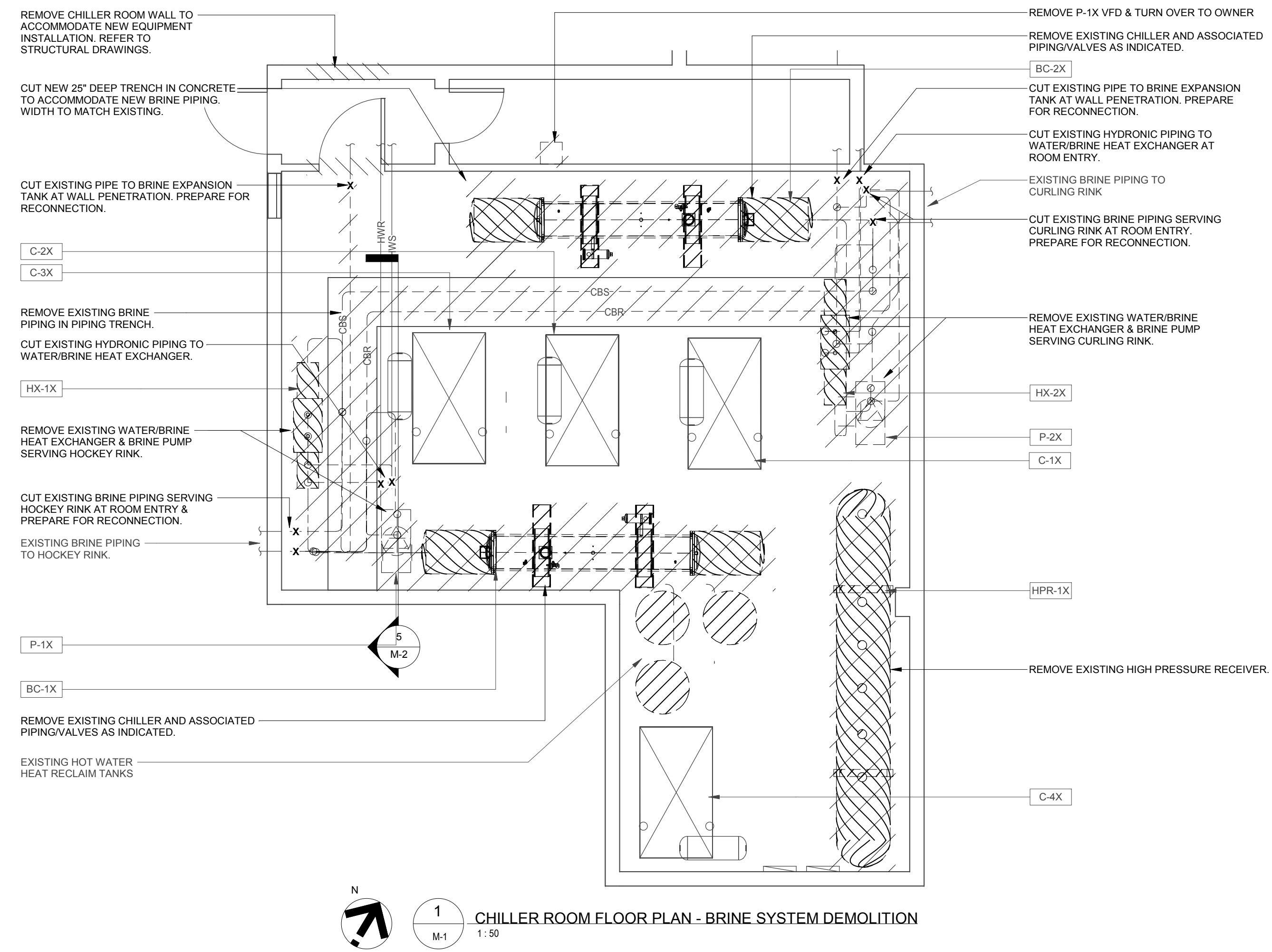
CERTIFICATE OF RECORD DRAWINGS

WE, FRASER VALLEY REFRIGERATION HEREBY CERTIFY THAT THE SET OF RECORD DRAWINGS ATTACHED HERETO, COMPRISED OF 7 SHEETS, IS A COMPLETE AND TOTAL RECORD OF THE BUILDING AS CONSTRUCTED. WE FURTHER CERTIFY THAT THE DRAWINGS SHOW ACCURATELY ALL MECHANICAL SERVICES, EXPOSED OR HIDDEN AND THAT THE OWNER MAY FULLY RELY ON THEIR ACCURACY IN ANY FUTURE CONTEMPLATED REPAIRS, MODIFICATIONS OR ADDITIONS TO THIS WORK.

CONTRACTOR:
 DATE:

SYMBOL SCHEDULE

—	PIPE CAP-OFF
—HWS	HEATING WATER SUPPLY (HWS) - EXISTING
—HWR	HEATING WATER RETURN (HWR) - EXISTING
—HWS	HEATING WATER SUPPLY (HWS) - NEW
—HWR	HEATING WATER RETURN (HWR) - NEW
—CBS	CHILLED BRINE SUPPLY (CBS) - EXISTING
—CBR	CHILLED BRINE RETURN (CBR) - EXISTING
—CBS	CHILLED BRINE SUPPLY (CBS) - NEW
—CBR	CHILLED BRINE RETURN (CBR) - NEW
—HPG	AMMONIA - HIGH PRESSURE GAS (HPG)
—HPL	AMMONIA - HIGH PRESSURE LIQUID (HPL) - EXISTING
—HPL	AMMONIA - HIGH PRESSURE LIQUID (HPL) - NEW
—LPL	AMMONIA - LOW PRESSURE LIQUID (LPL) - EXISTING
—LPL	AMMONIA - LOW PRESSURE LIQUID (LPL) - NEW
—SSL	AMMONIA - SATURATED SUCTION LINE (SSL) - EXISTING
—SSL	AMMONIA - SATURATED SUCTION LINE (SSL) - NEW
—GS	GLYCOL SUPPLY (GS) - EXISTING
—V	VENT (V) - EXISTING
—V	VENT (V) - NEW
—EQ	EQUALIZATION LINE (EQ) - NEW
→	DIRECTION OF FLOW
↘	PIPE DROP
↗	PIPE RISE
⊕	PIPE TEE DOWN
⊖	PIPE TEE UP
— —	PIPE SLEEVE
⊕⊖	PIPE UNION
— —	FLEXIBLE CONNECTION
⊕	CHECK VALVE
⊖	2-WAY CONTROL VALVE
⊖	MOTORIZED EXPANSION VALVE
⊖	GLOBE VALVE
⊖	BALL VALVE
⊖	BALANCING VALVE
⊖	PRESSURE REDUCING VALVE
⊖	STRAINER
⊖	SIGHT GLASS
⊖	RELIEF VALVE
⊖	ANGLE STOP VALVE
⊖	AUTOMATIC AIR VENT
⊖	TEMPERATURE SENSOR (DDC)
⊖	PRESSURE SENSOR (DDC)
⊖	PRESSURE GAUGE
⊖	THERMOMETER
⊖	PUMP
⊖	PIPE INSULATION (THICKNESS AS NOTED)
⊖	FLOOR DRAIN
⊖	FUNNEL FLOOR DRAIN
⊖	EQUIPMENT / FIXTURE TYPE
⊖	EXISTING EQUIPMENT TAG
⊖	DETAIL NUMBER
⊖	DRAWING NUMBER
⊖	PIPING/EQUIPMENT DEMOLITION
X	CUT EXISTING
CIE	CONNECT INTO EXISTING



CERTIFICATE OF RECORD DRAWINGS

WE, FRASER VALLEY REFRIGERATION HEREBY CERTIFY THAT THE SET OF RECORD DRAWINGS ATTACHED HERETO, COMPRISED OF 7 SHEETS, IS A COMPLETE AND TOTAL RECORD OF THE BUILDING AS CONSTRUCTED. WE FURTHER CERTIFY THAT THE DRAWINGS SHOW ACCURATELY ALL MECHANICAL SERVICES, EXPOSED OR HIDDEN AND THAT THE OWNER MAY FULLY RELY ON THEIR ACCURACY IN ANY FUTURE CONTEMPLATED REPAIRS, MODIFICATIONS OR ADDITIONS TO THIS WORK.

CONTRACTOR:
DATE:

REVISION - RECORD			
No.	DATE	DESCRIPTION	BY
1	09MAR18	ISSUED FOR TENDER	KH



CLIENT:

ROCKY POINT ENGINEERING LTD.
 Vancouver • Langley • Victoria • Nanaimo • Kelowna • Kamloops • Nelson
 VICTORIA OFFICE: #202 - 1701 ISLAND HIGHWAY VICTORIA, BC V9B 1J1
 www.rpeing.ca
 ph. 778-400-9828

SEAL:

PROJECT STATUS:
RECORD DRAWING

COPYRIGHT RESERVED:
Everything shown herein is for use on this project only and may not be reproduced without the written permission of ROCKY POINT ENGINEERING LTD. and unless the reproduction carries their name.

PROJECT TITLE:
ARCHIE BROWNING CHILLER REPLACEMENT

CLIENT:
TOWNSHIP OF ESQUIMALT

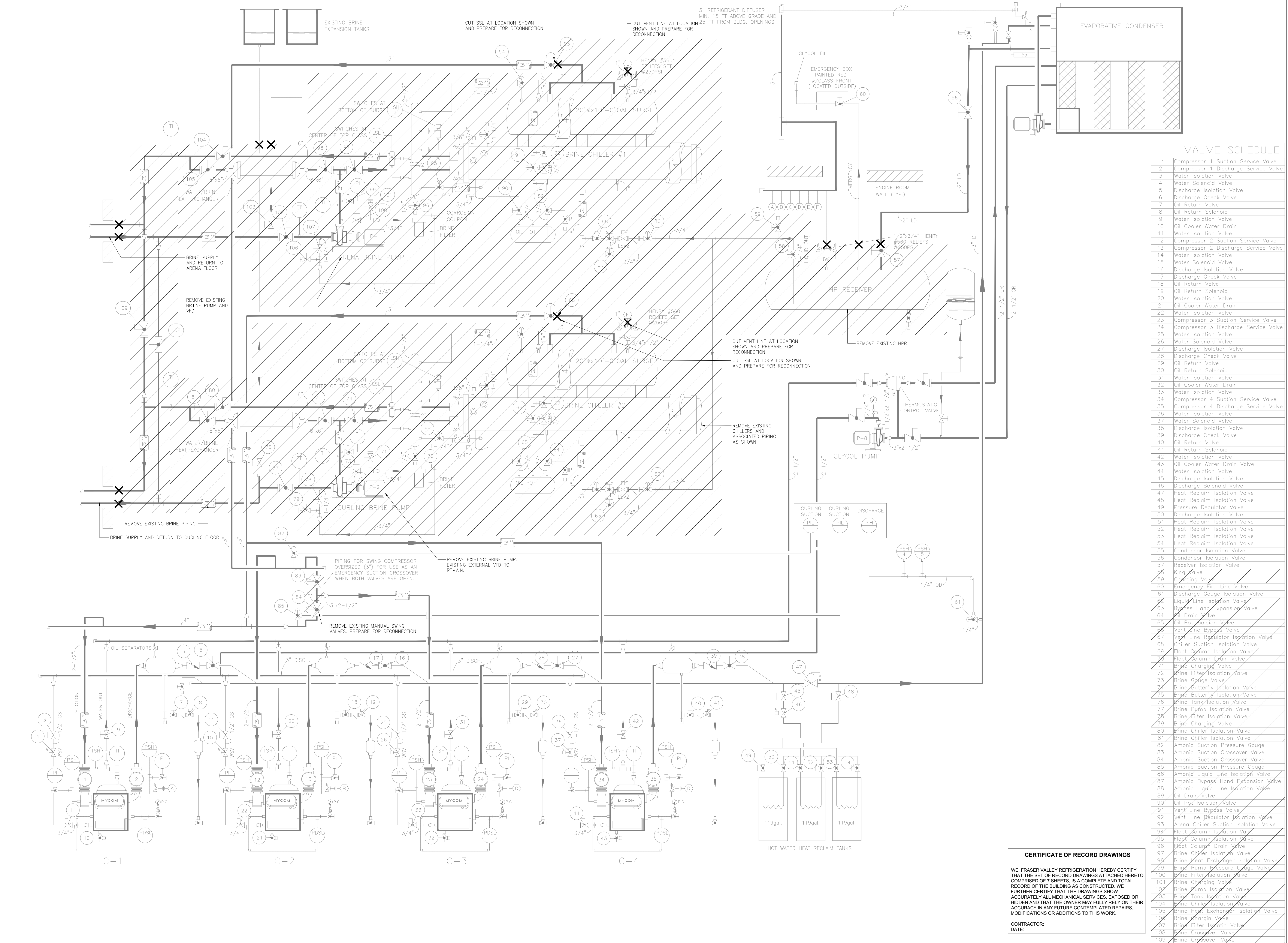
DRAWING TITLE:
CHILLER ROOM DEMOLITION

PROJECT NUMBER:
18080-S

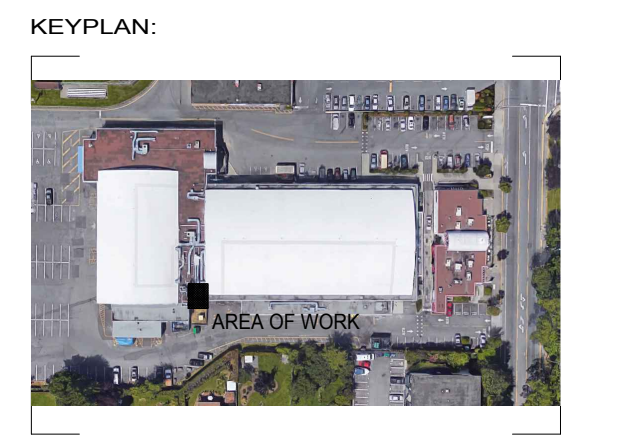
DRAWN: SL
 DESIGNED: KH
 CHECKED: KH
 DATE: 01 Feb 19
 SCALE: As indicated
 DRAWING NUMBER:

M-1

05/04/2019 8:27 AM



REVISION - RECORD			
No.	DATE	DESCRIPTION	BY
1	09MAR18	ISSUED FOR TENDER	KH



CLIENT:

ROCKY POINT ENGINEERING LTD.
 Vancouver • Langley • Victoria • Nanaimo • Kelowna • Kamloops • Nelson
 VICTORIA OFFICE: 202 - 1701 ISLAND HIGHWAY VICTORIA, BC V9B 1J1
 www.rpeng.ca
 ph. 778.400.9825

SEAL:

PROJECT STATUS:

RECORD DRAWING

COPYRIGHT RESERVED:
 Everything shown herein is for use on this project only and may not be reproduced without the written permission of ROCKY POINT ENGINEERING LTD. and unless the reproduction carries their name.

PROJECT TITLE:

ARCHIE BROWNING CHILLER REPLACEMENT

CLIENT:

TOWNSHIP OF ESQUIMALT

DRAWING TITLE:

PIPING AND INSTRUMENTATION DIAGRAM DEMOLITION

PROJECT NUMBER:

18080-S

DRAWN: RB
 DESIGNED: KH
 CHECKED: KH
 DATE: 01 Feb 19
 SCALE: AS NOTED
 DRAWING NUMBER:

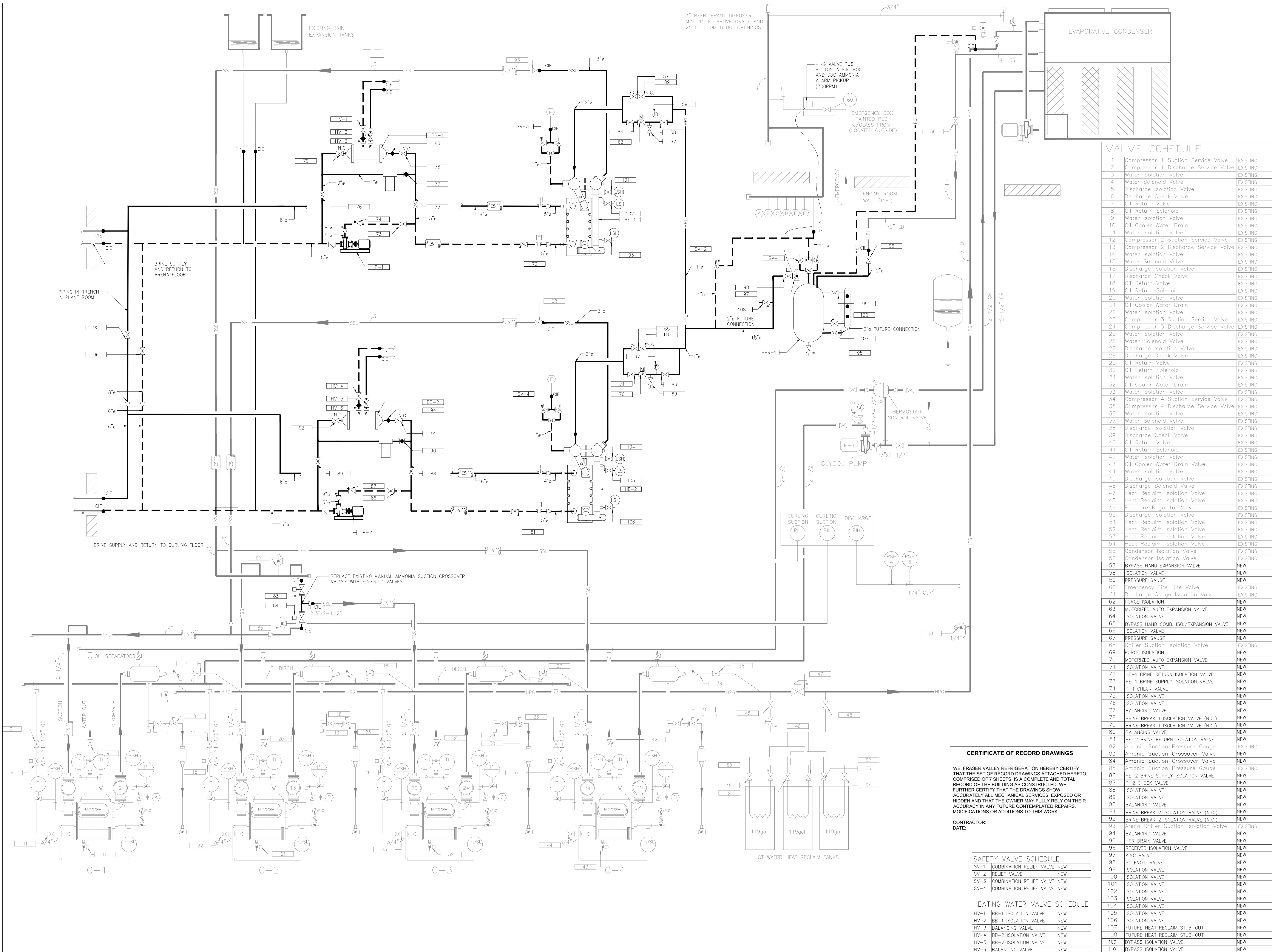
M-3

VALVE SCHEDULE	
1	Compressor 1 Suction Service Valve
2	Compressor 1 Discharge Service Valve
3	Water Isolation Valve
4	Water Solenoid Valve
5	Discharge Isolation Valve
6	Discharge Check Valve
7	Oil Return Valve
8	Oil Return Solenoid
9	Water Isolation Valve
10	Oil Cooler Water Drain
11	Water Isolation Valve
12	Compressor 2 Suction Service Valve
13	Compressor 2 Discharge Service Valve
14	Water Isolation Valve
15	Water Solenoid Valve
16	Discharge Isolation Valve
17	Discharge Check Valve
18	Oil Return Valve
19	Oil Return Solenoid
20	Water Isolation Valve
21	Oil Cooler Water Drain
22	Water Isolation Valve
23	Compressor 3 Suction Service Valve
24	Compressor 3 Discharge Service Valve
25	Water Isolation Valve
26	Water Solenoid Valve
27	Discharge Isolation Valve
28	Discharge Check Valve
29	Oil Return Valve
30	Oil Return Solenoid
31	Water Isolation Valve
32	Oil Cooler Water Drain
33	Water Isolation Valve
34	Compressor 4 Suction Service Valve
35	Compressor 4 Discharge Service Valve
36	Water Isolation Valve
37	Water Solenoid Valve
38	Discharge Isolation Valve
39	Discharge Check Valve
40	Oil Return Valve
41	Oil Return Solenoid
42	Water Isolation Valve
43	Oil Cooler Water Drain Valve
44	Water Isolation Valve
45	Discharge Isolation Valve
46	Discharge Solenoid Valve
47	Heat Reclaim Isolation Valve
48	Heat Reclaim Isolation Valve
49	Pressure Regulator Valve
50	Discharge Isolation Valve
51	Heat Reclaim Isolation Valve
52	Heat Reclaim Isolation Valve
53	Heat Reclaim Isolation Valve
54	Heat Reclaim Isolation Valve
55	Condensor Isolation Valve
56	Condensor Isolation Valve
57	Receiver Isolation Valve
58	King Valve
59	Charging Valve
60	Emergency Fire Line Valve
61	Discharge Gauge Isolation Valve
62	Liquid Line Isolation Valve
63	Bypass Hand Expansion Valve
64	Oil Drain Valve
65	Oil Pot Isolation Valve
66	Vent Line Bypass Valve
67	Vent Line Regulator Isolation Valve
68	Chiller Suction Isolation Valve
69	Float Column Isolation Valve
70	Float Column Drain Valve
71	Brine Charging Valve
72	Brine Filter Isolation Valve
73	Brine Gauge Valve
74	Brine Butterfly Isolation Valve
75	Brine Butterfly Isolation Valve
76	Brine Tank Isolation Valve
77	Brine Pump Isolation Valve
78	Brine Filter Isolation Valve
79	Brine Charging Valve
80	Brine Chiller Isolation Valve
81	Brine Chiller Isolation Valve
82	Ammonia Suction Pressure Gauge
83	Ammonia Suction Crossover Valve
84	Ammonia Suction Crossover Valve
85	Ammonia Suction Pressure Gauge
86	Ammonia Liquid Line Isolation Valve
87	Ammonia Bypass Hand Expansion Valve
88	Ammonia Liquid Line Isolation Valve
89	Oil Drain Valve
90	Oil Pot Isolation Valve
91	Vent Line Bypass Valve
92	Vent Line Regulator Isolation Valve
93	Arena Chiller Suction Isolation Valve
94	Float Column Isolation Valve
95	Float Column Isolation Valve
96	Float Column Drain Valve
97	Brine Chiller Isolation Valve
98	Brine Heat Exchanger Isolation Valve
99	Brine Pump Pressure Gauge Valve
100	Brine Filter Isolation Valve
101	Brine Charging Valve
102	Brine Pump Isolation Valve
103	Brine Tank Isolation Valve
104	Brine Chiller Isolation Valve
105	Brine Heat Exchanger Isolation Valve
106	Brine Charge Valve
107	Brine Filter Isolation Valve
108	Brine Crossover Valve
109	Brine Crossover Valve

CERTIFICATE OF RECORD DRAWINGS

WE, FRASER VALLEY REFRIGERATION HEREBY CERTIFY THAT THE SET OF RECORD DRAWINGS ATTACHED HERETO, COMPRISED OF 7 SHEETS, IS A COMPLETE AND TOTAL RECORD OF THE BUILDING AS CONSTRUCTED. WE FURTHER CERTIFY THAT THE DRAWINGS SHOW ACCURATELY ALL MECHANICAL SERVICES, EXPOSED OR HIDDEN AND THAT THE OWNER MAY FULLY RELY ON THEIR ACCURACY IN ANY FUTURE CONTEMPLATED REPAIRS, MODIFICATIONS OR ADDITIONS TO THIS WORK.

CONTRACTOR:
 DATE:



VALVE SCHEDULE

1	Compressor 1 Suction Service Valve	EXISTING
2	Compressor 1 Discharge Service Valve	EXISTING
3	Water Isolation Valve	EXISTING
4	Water Solenoid Valve	EXISTING
5	Discharge Isolation Valve	EXISTING
6	Discharge Check Valve	EXISTING
7	Oil Return Valve	EXISTING
8	Oil Return Solenoid	EXISTING
9	Water Isolation Valve	EXISTING
10	Oil Cooler Water Drain	EXISTING
11	Water Isolation Valve	EXISTING
12	Compressor 2 Suction Service Valve	EXISTING
13	Compressor 2 Discharge Service Valve	EXISTING
14	Water Isolation Valve	EXISTING
15	Water Solenoid Valve	EXISTING
16	Discharge Isolation Valve	EXISTING
17	Discharge Check Valve	EXISTING
18	Oil Return Valve	EXISTING
19	Oil Return Solenoid	EXISTING
20	Water Isolation Valve	EXISTING
21	Oil Cooler Water Drain	EXISTING
22	Water Isolation Valve	EXISTING
23	Compressor 3 Suction Service Valve	EXISTING
24	Compressor 3 Discharge Service Valve	EXISTING
25	Water Isolation Valve	EXISTING
26	Water Solenoid Valve	EXISTING
27	Discharge Isolation Valve	EXISTING
28	Discharge Check Valve	EXISTING
29	Oil Return Valve	EXISTING
30	Oil Return Solenoid	EXISTING
31	Water Isolation Valve	EXISTING
32	Oil Cooler Water Drain	EXISTING
33	Water Isolation Valve	EXISTING
34	Compressor 4 Suction Service Valve	EXISTING
35	Compressor 4 Discharge Service Valve	EXISTING
36	Water Isolation Valve	EXISTING
37	Water Solenoid Valve	EXISTING
38	Discharge Isolation Valve	EXISTING
39	Discharge Check Valve	EXISTING
40	Oil Return Valve	EXISTING
41	Oil Return Solenoid	EXISTING
42	Water Isolation Valve	EXISTING
43	Oil Cooler Water Drain Valve	EXISTING
44	Water Isolation Valve	EXISTING
45	Discharge Isolation Valve	EXISTING
46	Discharge Solenoid Valve	EXISTING
47	Heat Reclaim Isolation Valve	EXISTING
48	Heat Reclaim Isolation Valve	EXISTING
49	Pressure Regulator Valve	EXISTING
50	Discharge Isolation Valve	EXISTING
51	Heat Reclaim Isolation Valve	EXISTING
52	Heat Reclaim Isolation Valve	EXISTING
53	Heat Reclaim Isolation Valve	EXISTING
54	Heat Reclaim Isolation Valve	EXISTING
55	Condenser Isolation Valve	EXISTING
56	Condenser Isolation Valve	EXISTING
57	BYPASS HAND EXPANSION VALVE	NEW
58	ISOLATION VALVE	NEW
59	PRESSURE GAUGE	NEW
60	Emergency Fire Line Valve	EXISTING
61	Discharge Gauge Isolation Valve	EXISTING
62	PURGE ISOLATION VALVE	NEW
63	MOTORIZED AUTO EXPANSION VALVE	NEW
64	ISOLATION VALVE	NEW
65	BYPASS HAND COMB. ISO./EXPANSION VALVE	NEW
66	ISOLATION VALVE	NEW
67	PRESSURE GAUGE	NEW
68	Chiller Suction Isolation Valve	EXISTING
69	PURGE ISOLATION VALVE	NEW
70	MOTORIZED AUTO EXPANSION VALVE	NEW
71	ISOLATION VALVE	NEW
72	HE-1 BRINE RETURN ISOLATION VALVE	NEW
73	HE-1 BRINE SUPPLY ISOLATION VALVE	NEW
74	P-1 CHECK VALVE	NEW
75	ISOLATION VALVE	NEW
76	ISOLATION VALVE	NEW
77	BALANCING VALVE	NEW
78	BRINE BREAK 1 ISOLATION VALVE (N.C.)	NEW
79	BRINE BREAK 1 ISOLATION VALVE (N.C.)	NEW
80	BALANCING VALVE	NEW
81	HE-2 BRINE RETURN ISOLATION VALVE	EXISTING
82	Ammonia Suction Pressure Gauge	EXISTING
83	Ammonia Suction Crossover Valve	NEW
84	Ammonia Suction Crossover Valve	NEW
85	Ammonia Suction Pressure Gauge	EXISTING
86	HE-2 BRINE SUPPLY ISOLATION VALVE	NEW
87	P-2 CHECK VALVE	NEW
88	ISOLATION VALVE	NEW
89	ISOLATION VALVE	NEW
90	BALANCING VALVE	NEW
91	BRINE BREAK 2 ISOLATION VALVE (N.C.)	NEW
92	BRINE BREAK 2 ISOLATION VALVE (N.C.)	NEW
93	Arena Chiller Suction Isolation Valve	EXISTING
94	BALANCING VALVE	NEW
95	HPR DRAIN VALVE	NEW
96	RECEIVER ISOLATION VALVE	NEW
97	KING VALVE	NEW
98	SOLENOID VALVE	NEW
99	ISOLATION VALVE	NEW
100	ISOLATION VALVE	NEW
101	ISOLATION VALVE	NEW
102	ISOLATION VALVE	NEW
103	ISOLATION VALVE	NEW
104	ISOLATION VALVE	NEW
105	ISOLATION VALVE	NEW
106	ISOLATION VALVE	NEW
107	FUTURE HEAT RECLAIM STUB-OUT	NEW
108	FUTURE HEAT RECLAIM STUB-OUT	NEW
109	BYPASS ISOLATION VALVE	NEW
110	BYPASS ISOLATION VALVE	NEW

CERTIFICATE OF RECORD DRAWINGS

WE, FRASER VALLEY REFRIGERATION HEREBY CERTIFY THAT THE SET OF RECORD DRAWINGS ATTACHED HERETO, COMPRISED OF 7 SHEETS, IS A COMPLETE AND TOTAL RECORD OF THE BUILDING AS CONSTRUCTED. WE FURTHER CERTIFY THAT THE DRAWINGS SHOW ACCURATELY ALL MECHANICAL SERVICES, EXPOSED OR HIDDEN AND THAT THE OWNER MAY FULLY RELY ON THEIR ACCURACY IN ANY FUTURE CONTEMPLATED REPAIRS, MODIFICATIONS OR ADDITIONS TO THIS WORK.

CONTRACTOR:
DATE:

SAFETY VALVE SCHEDULE

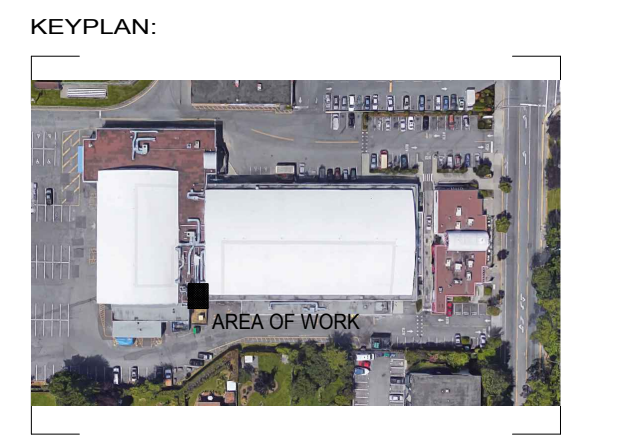
SV-1	COMBINATION RELIEF VALVE	NEW
SV-2	RELIEF VALVE	NEW
SV-3	COMBINATION RELIEF VALVE	NEW
SV-4	COMBINATION RELIEF VALVE	NEW

HEATING WATER VALVE SCHEDULE

HV-1	BB-1 ISOLATION VALVE	NEW
HV-2	BB-1 ISOLATION VALVE	NEW
HV-3	BALANCING VALVE	NEW
HV-4	BB-2 ISOLATION VALVE	NEW
HV-5	BB-2 ISOLATION VALVE	NEW
HV-6	BALANCING VALVE	NEW

REVISION - RECORD

No.	DATE	DESCRIPTION	BY
1	09MARR18	ISSUED FOR TENDER	KH



CLIENT:

ROCKY POINT ENGINEERING LTD.
 Vancouver • Langley • Victoria • Nanaimo • Kelowna • Kamloops • Nelson
 VICTORIA OFFICE
 #202 - 1701 ISLAND HIGHWAY
 VICTORIA, BC V8B 1J1
 www.rpe.ca
 ph. 778.400.9825

SEAL:

PROJECT STATUS:

RECORD DRAWING

COPYRIGHT RESERVED:
 Everything shown herein is for use on this project only and may not be reproduced without the written permission of ROCKY POINT ENGINEERING LTD. and unless the reproduction carries their name.

PROJECT TITLE:

ARCHIE BROWNING CHILLER REPLACEMENT

CLIENT:

TOWNSHIP OF ESQUIMALT

DRAWING TITLE:

PIPING AND INSTRUMENTATION DIAGRAM PROPOSED WORK

PROJECT NUMBER:

18080-S

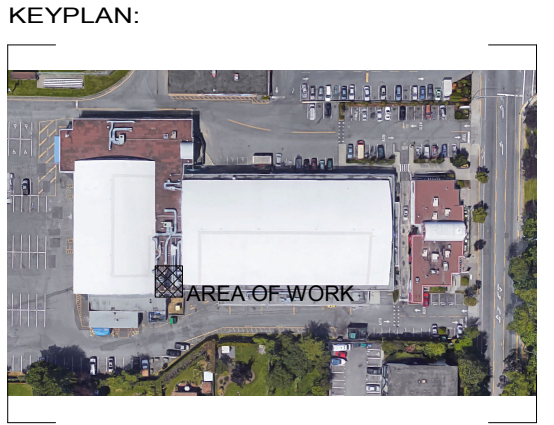
DRAWN: RB
DESIGNED: KH
CHECKED: KH
DATE: 01 Feb 19

SCALE: AS NOTED

DRAWING NUMBER:

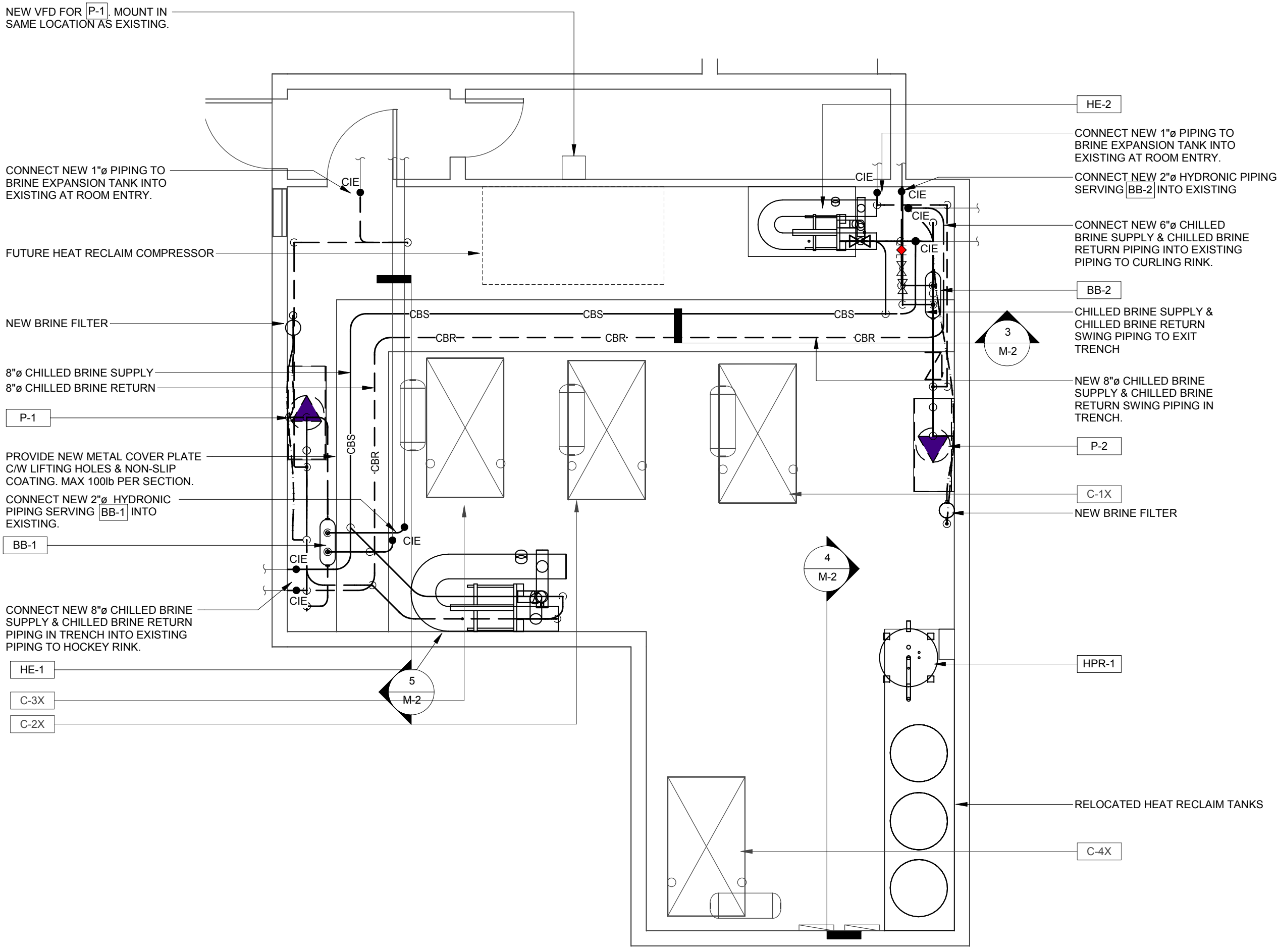
M-4

REVISION - RECORD			
No.	DATE	DESCRIPTION	BY
1	09MAR18	ISSUED FOR TENDER	KH

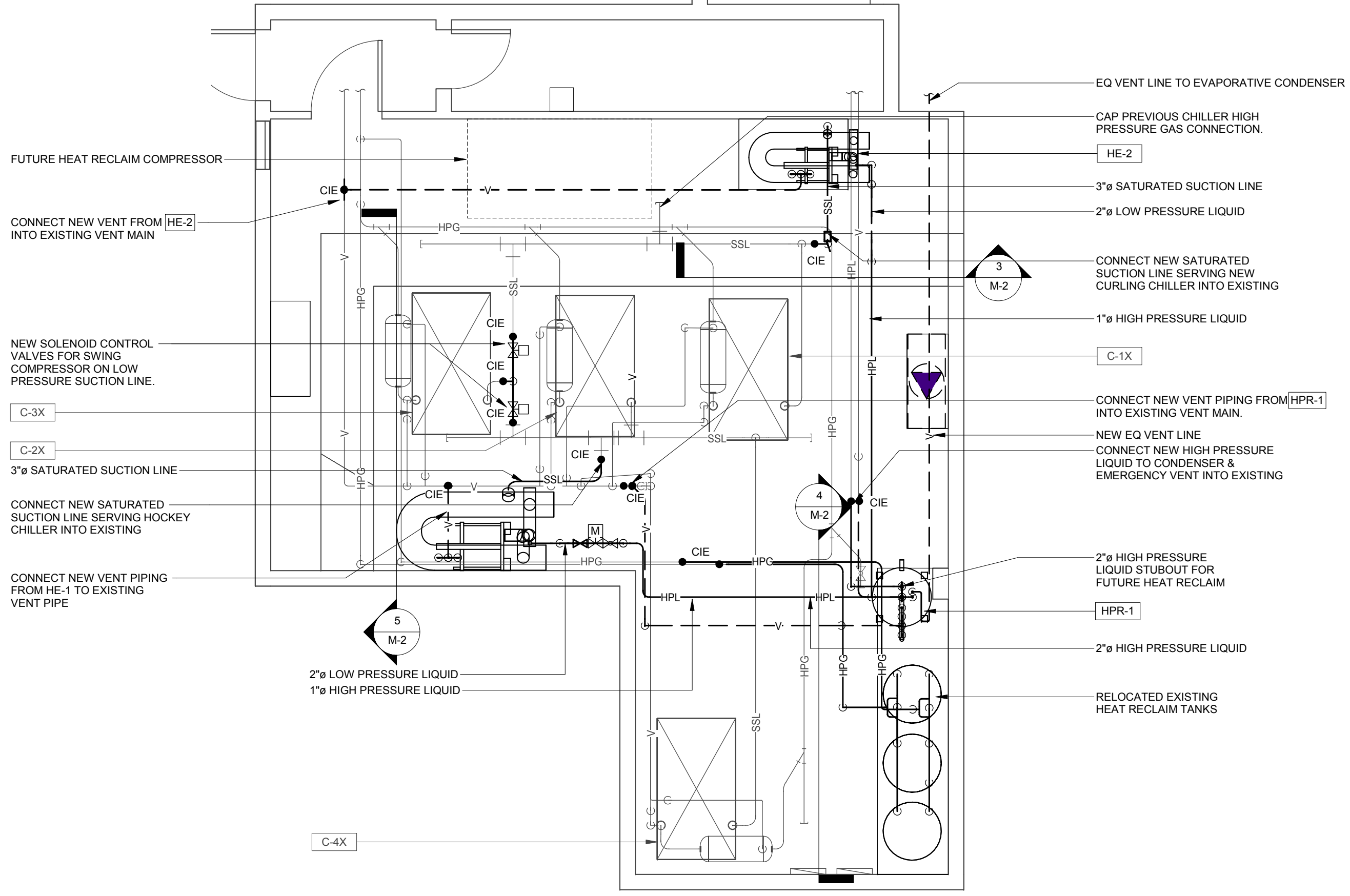


CLIENT:
[]

ROCKY POINT
ENGINEERING LTD.
Vancouver • Langley • Victoria • Nanaimo • Kelowna • Kamloops • Nelson
VICTORIA OFFICE #202 - 1701 ISLAND HIGHWAY VICTORIA, BC V9B 1J1
www.rpeing.ca ph. 778-400-9825



1
M-2 1:50
CHILLER ROOM FLOOR PLAN - BRINE SYSTEM PROPOSED WORK



2
M-2 1:50
CHILLER ROOM FLOOR PLAN - AMMONIA & VENTING PROPOSED WORK

CERTIFICATE OF RECORD DRAWINGS
WE, FRASER VALLEY REFRIGERATION HEREBY CERTIFY THAT THE SET OF RECORD DRAWINGS ATTACHED HERETO, COMPRISED OF 7 SHEETS, IS A COMPLETE AND TOTAL RECORD OF THE BUILDING AS CONSTRUCTED. WE FURTHER CERTIFY THAT THE DRAWINGS SHOW ACCURATELY ALL MECHANICAL SERVICES, EXPOSED OR HIDDEN AND THAT THE OWNER MAY FULLY RELY ON THEIR ACCURACY IN ANY FUTURE CONTEMPLATED REPAIRS, MODIFICATIONS OR ADDITIONS TO THIS WORK.
CONTRACTOR:
DATE:

SEAL:
[]

PROJECT STATUS:
RECORD DRAWING

COPYRIGHT RESERVED:
Everything shown hereon is for use on this project only and may not be reproduced without the written permission of ROCKY POINT ENGINEERING LTD. and unless the reproduction carries their name.

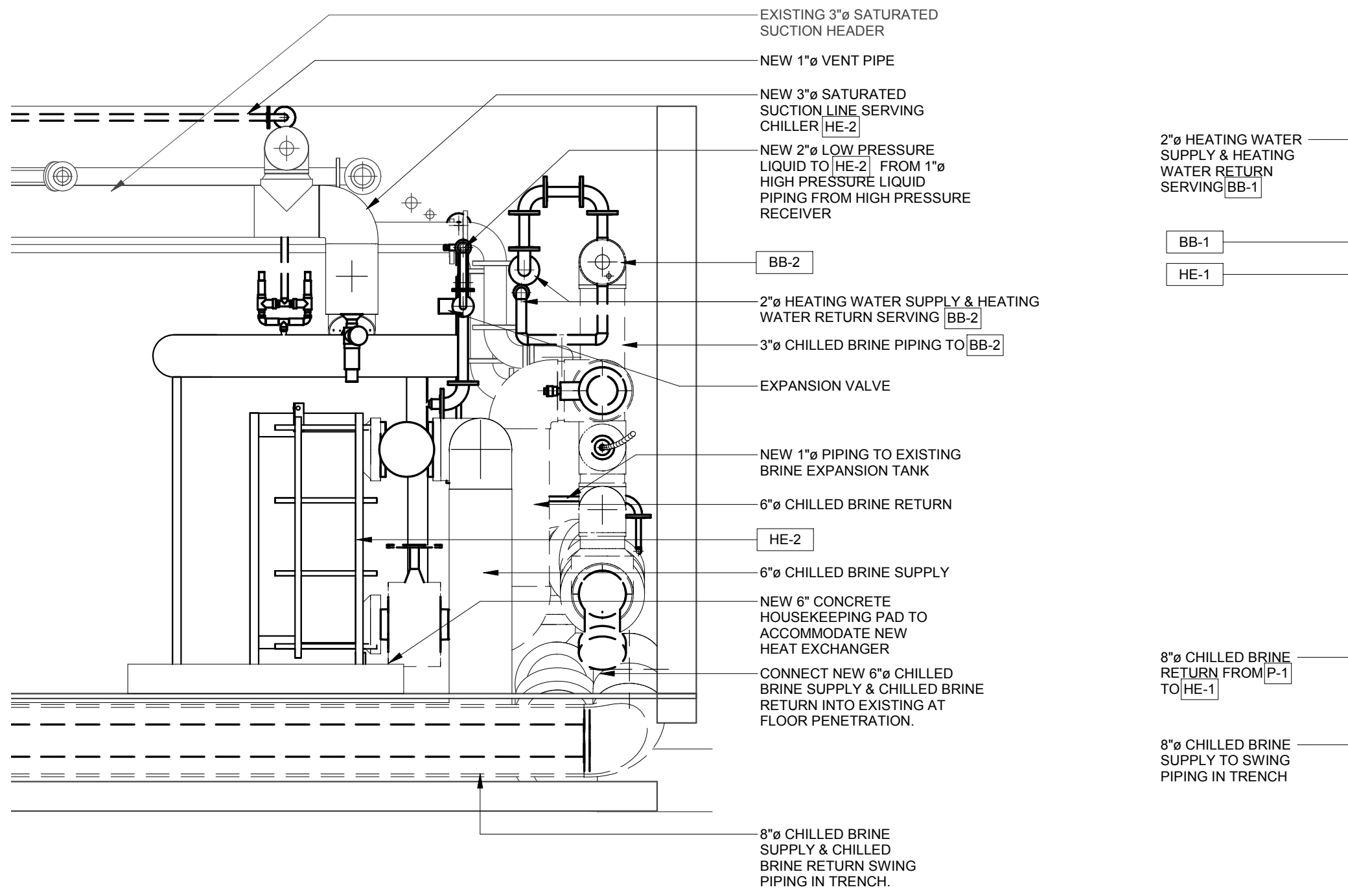
PROJECT TITLE:
ARCHIE BROWNING CHILLER REPLACEMENT

CLIENT:
TOWNSHIP OF ESQUIMALT

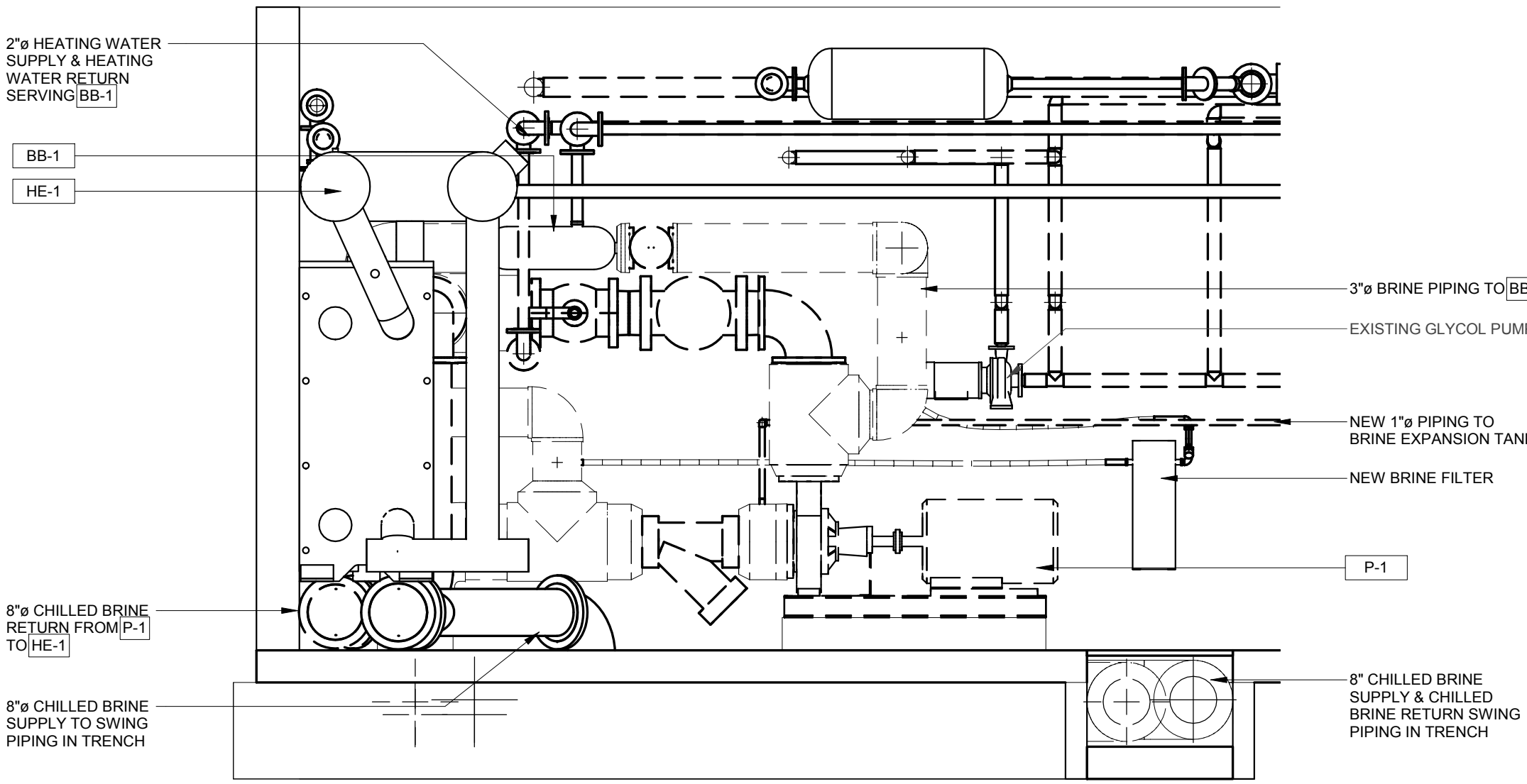
DRAWING TITLE:
CHILLER ROOM PROPOSED WORK

PROJECT NUMBER:
18080-S
DRAWN: SL
DESIGNED: KH
CHECKED: KH
DATE: 01 Feb 19
SCALE: As indicated
DRAWING NUMBER:

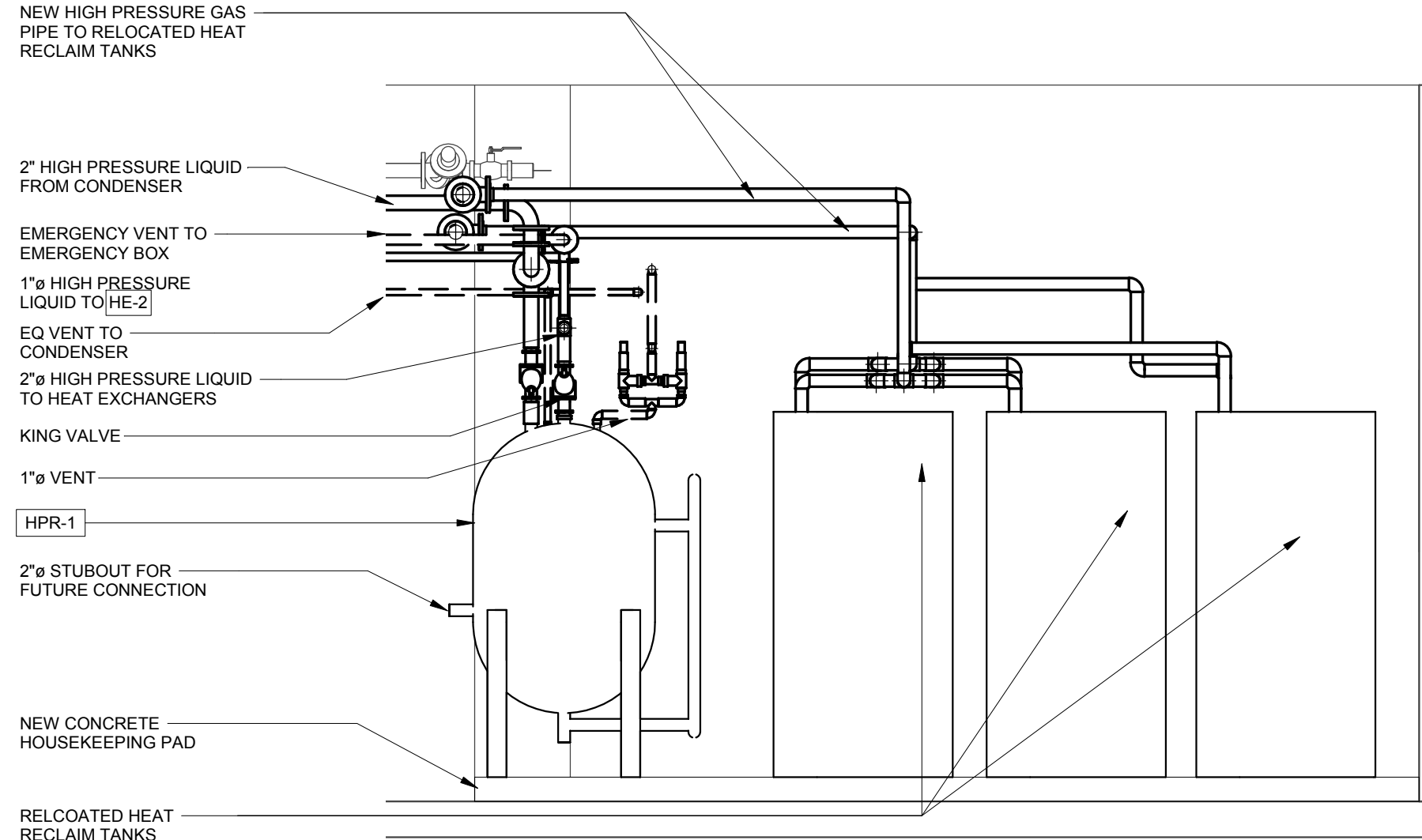
M-2



3
M-2 N.T.S.
CHILLER ROOM SECTION - PROPOSED CURLING HEAT EXCHANGER

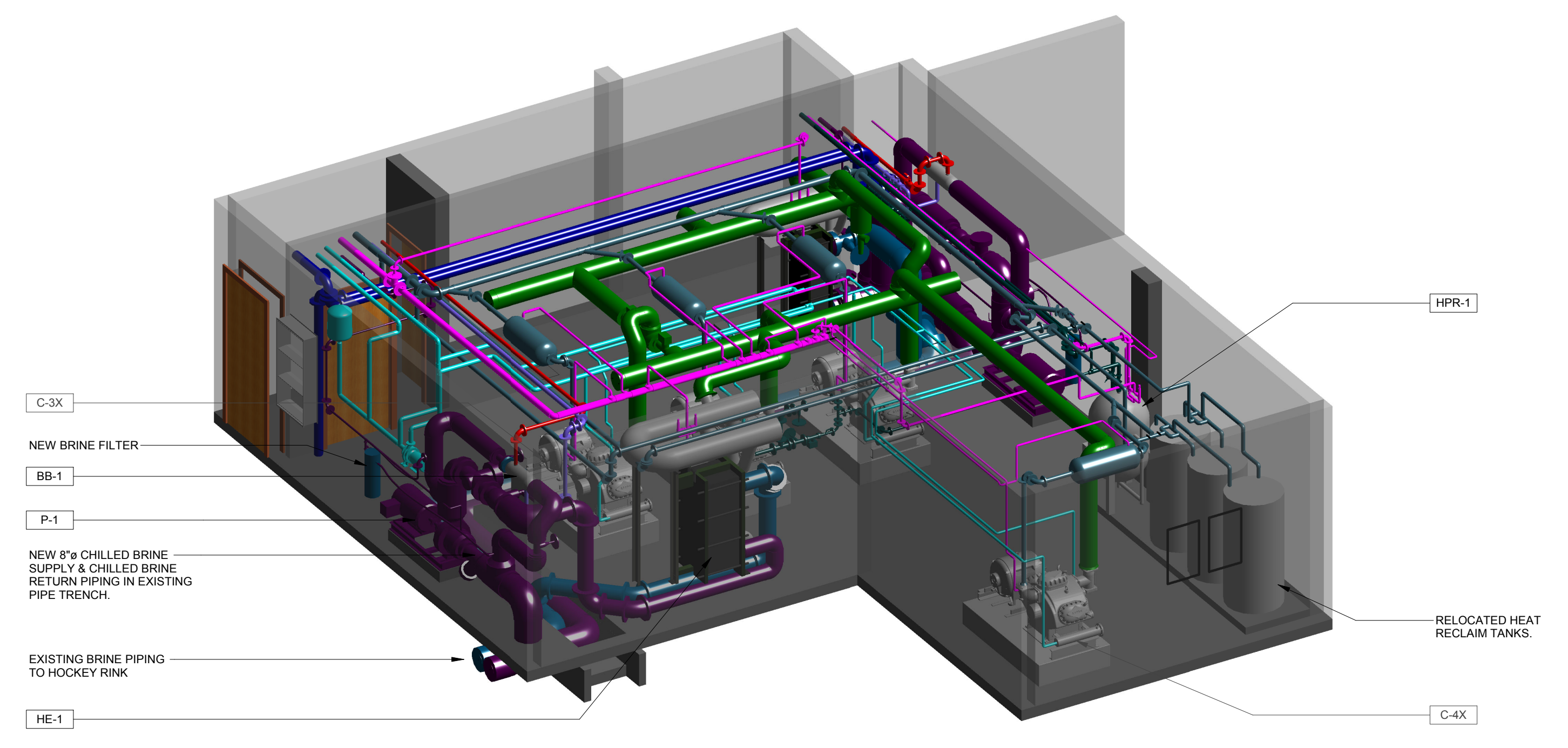


5
M-2 N.T.S.
SECTION - PROPOSED HOCKEY HEAT EXCHANGER



4
M-2 N.T.S.
PROPOSED HIGH PRESSURE RECEIVER

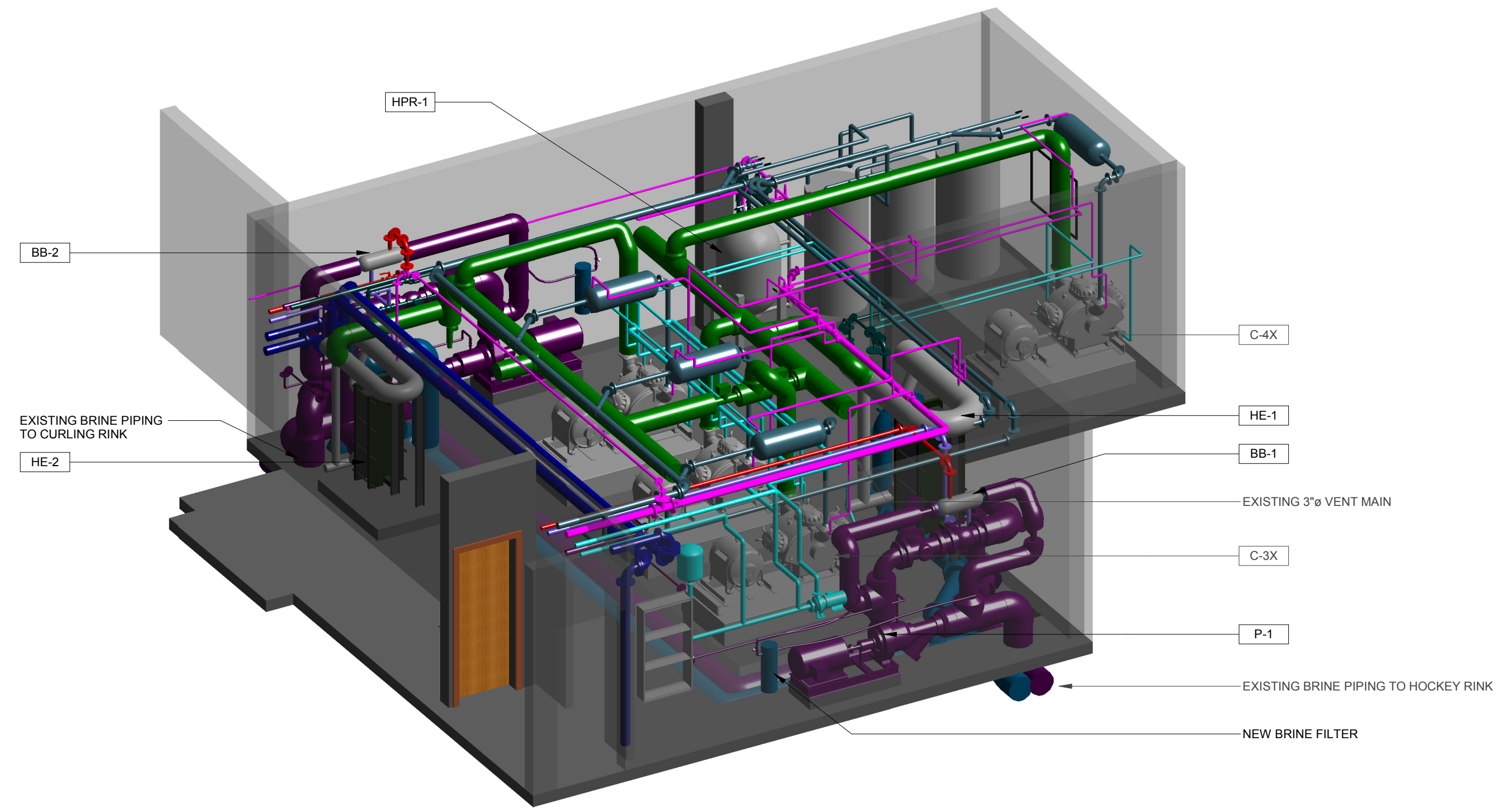
REVISION - RECORD			
No.	DATE	DESCRIPTION	BY
1	09MAR18	ISSUED FOR TENDER	KH



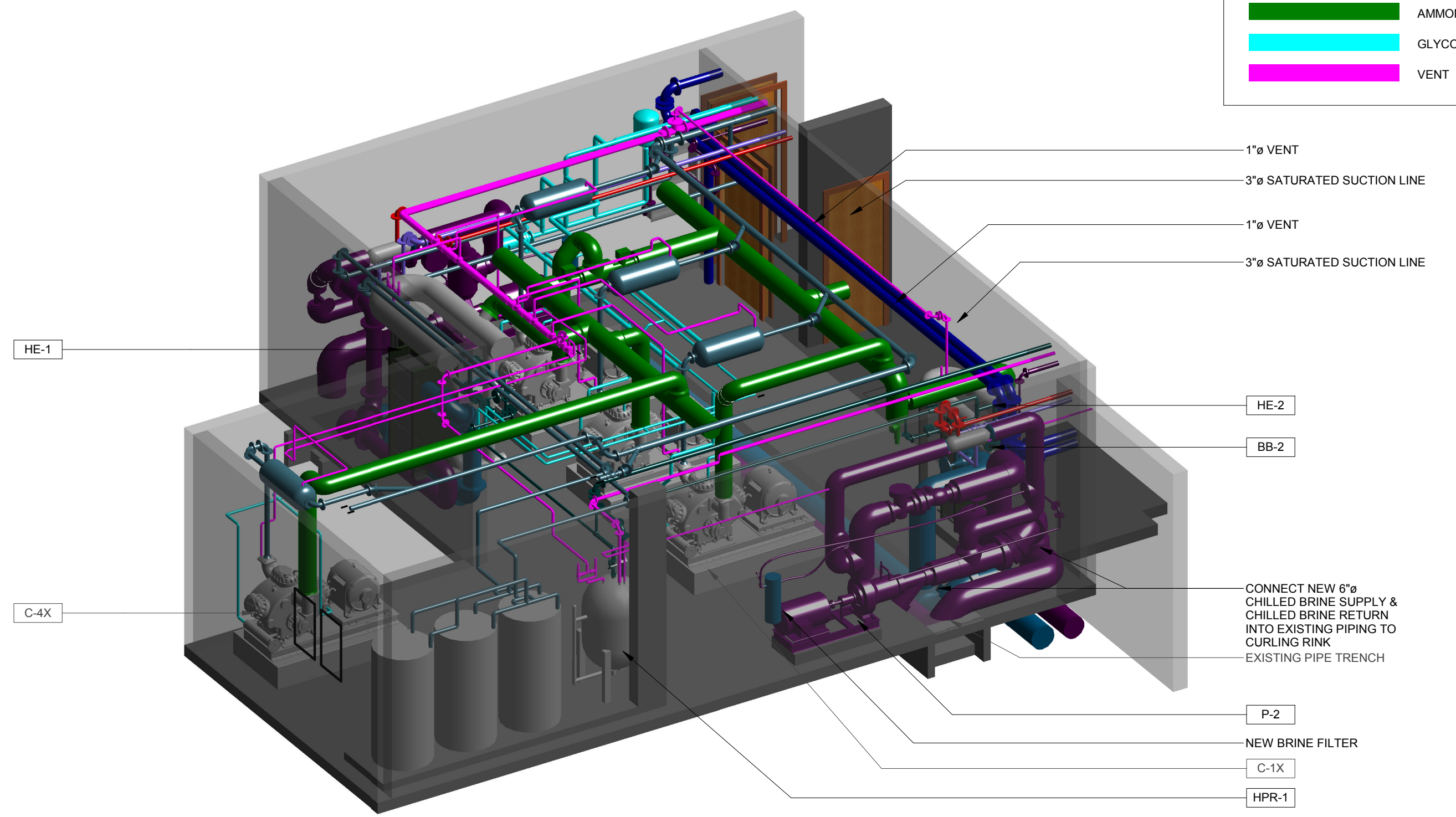
1
M-5
3D VIEW - CHILLER ROOM MECHANICAL NEW WORK - NORTH
N.T.S.

3D-VIEW COLOUR LEGEND

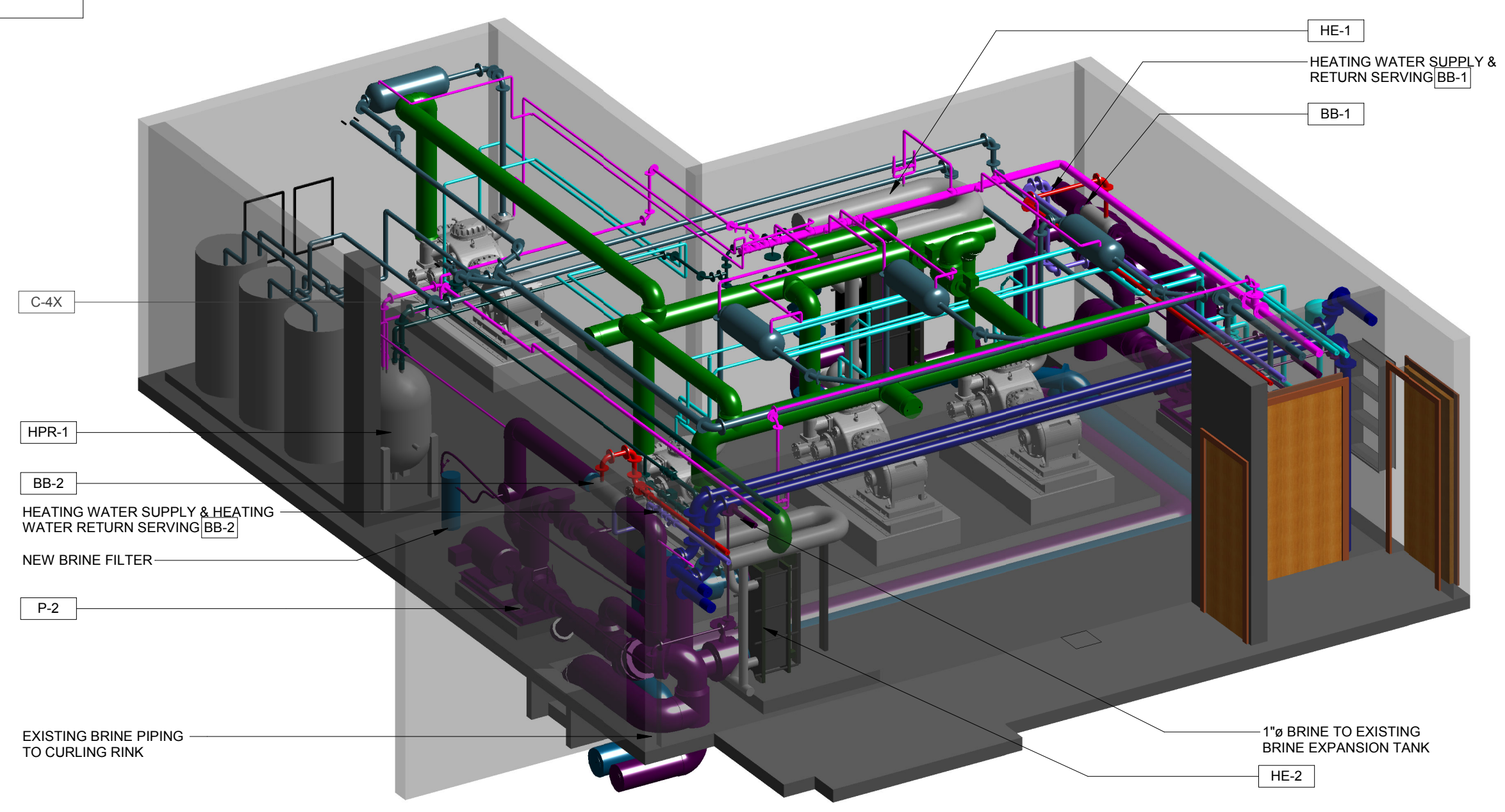
Red	HEATING WATER SUPPLY
Blue	HEATING WATER RETURN
Dark Blue	DOMESTIC COLD WATER
Light Blue	CHILLED BRINE SUPPLY
Purple	CHILLED BRINE RETURN
Dark Green	AMMONIA - HIGH PRESSURE GAS
Medium Green	AMMONIA - HIGH PRESSURE LIQUID
Light Green	AMMONIA - LOW PRESSURE LIQUID
Bright Green	AMMONIA - SATURATED SUCTION LINE
Cyan	GLYCOL
Magenta	VENT



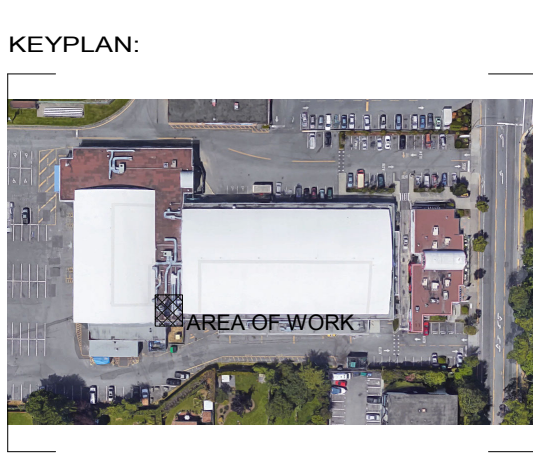
2
M-5
3D VIEW - CHILLER ROOM MECHANICAL NEW WORK - EAST
N.T.S.



3
M-5
3D VIEW - CHILLER ROOM MECHANICAL NEW WORK - WEST
N.T.S.



4
M-5
3D VIEW - CHILLER ROOM MECHANICAL NEW WORK - SOUTH
N.T.S.



CLIENT:

TOWNSHIP OF ESQUIMALT

ROCKY POINT ENGINEERING LTD.
 Vancouver • Langley • Victoria • Nanaimo • Kelowna • Kamloops • Nelson

VICTORIA OFFICE
 #202 - 1701 ISLAND HIGHWAY
 VICTORIA, BC V9B 1J1

www.rpeing.ca
 ph. 778-400-3525

SEAL:

PROJECT STATUS:

RECORD DRAWING

COPYRIGHT RESERVED:
 Everything shown hereon is for use on this project only and may not be reproduced without the written permission of ROCKY POINT ENGINEERING LTD. and unless the reproduction carries their name.

PROJECT TITLE:
**ARCHIE BROWNING
 CHILLER
 REPLACEMENT**

CLIENT:
**TOWNSHIP OF
 ESQUIMALT**

DRAWING TITLE:
**CHILLER ROOM
 3D VIEWS**

PROJECT NUMBER:
18080-S

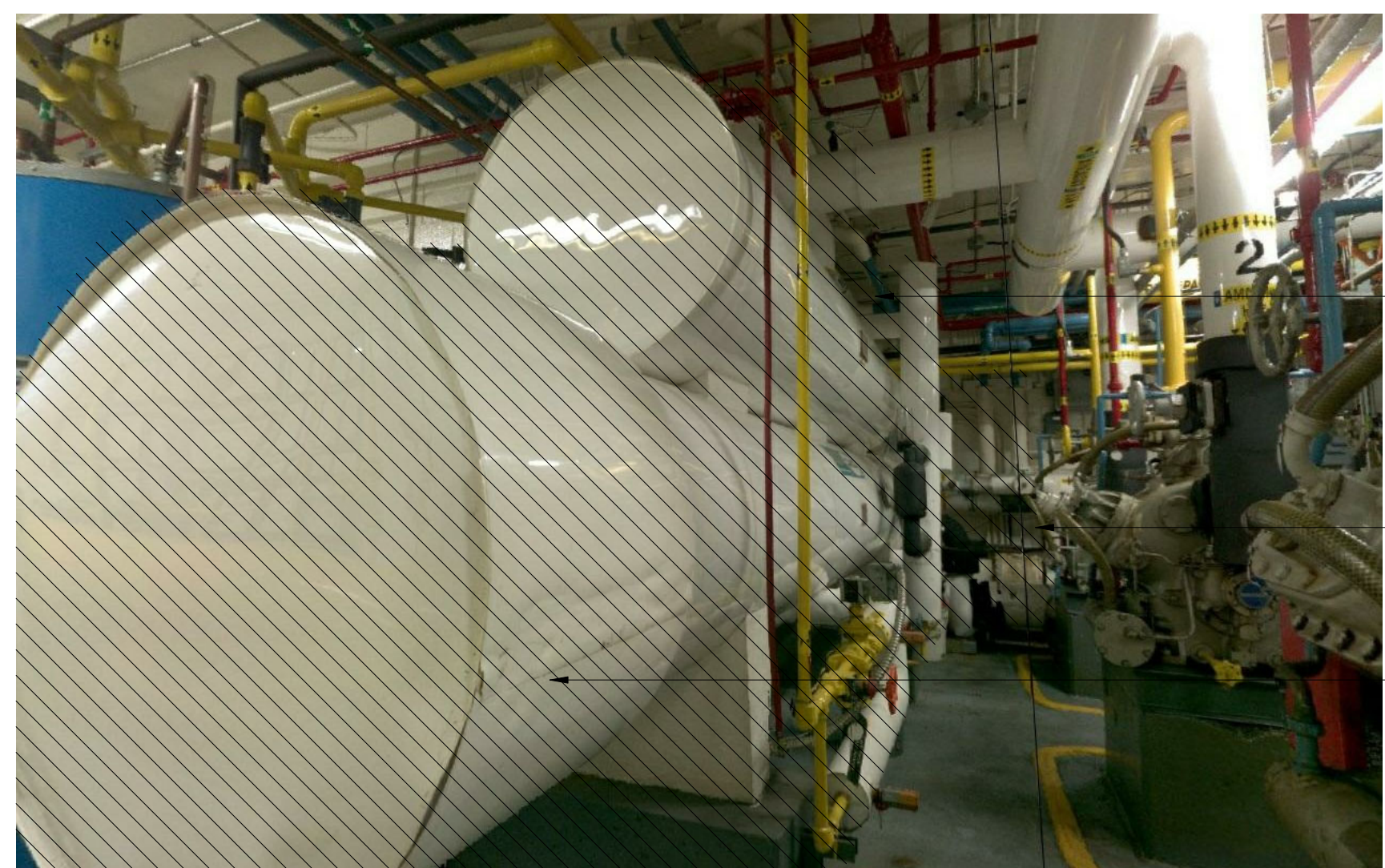
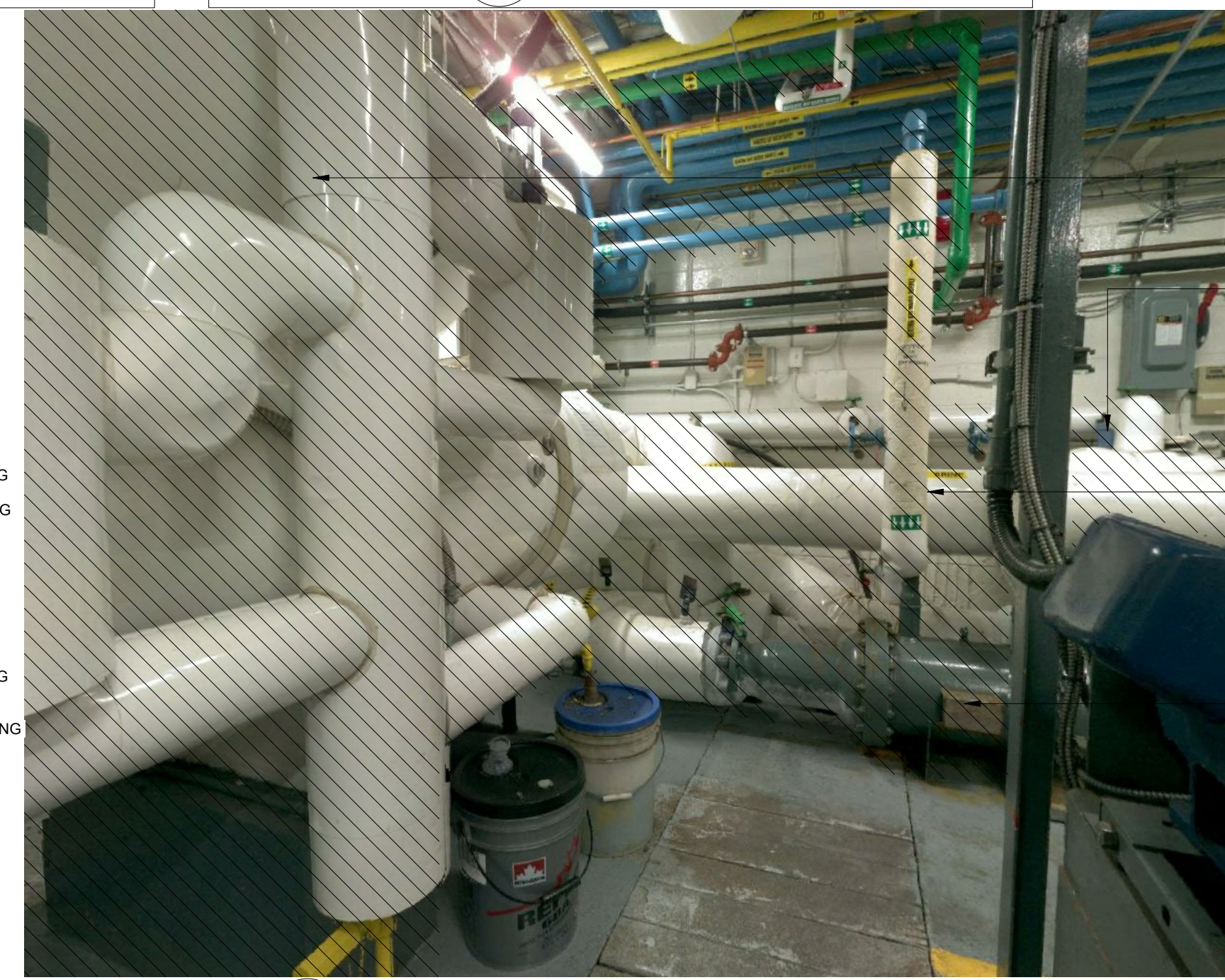
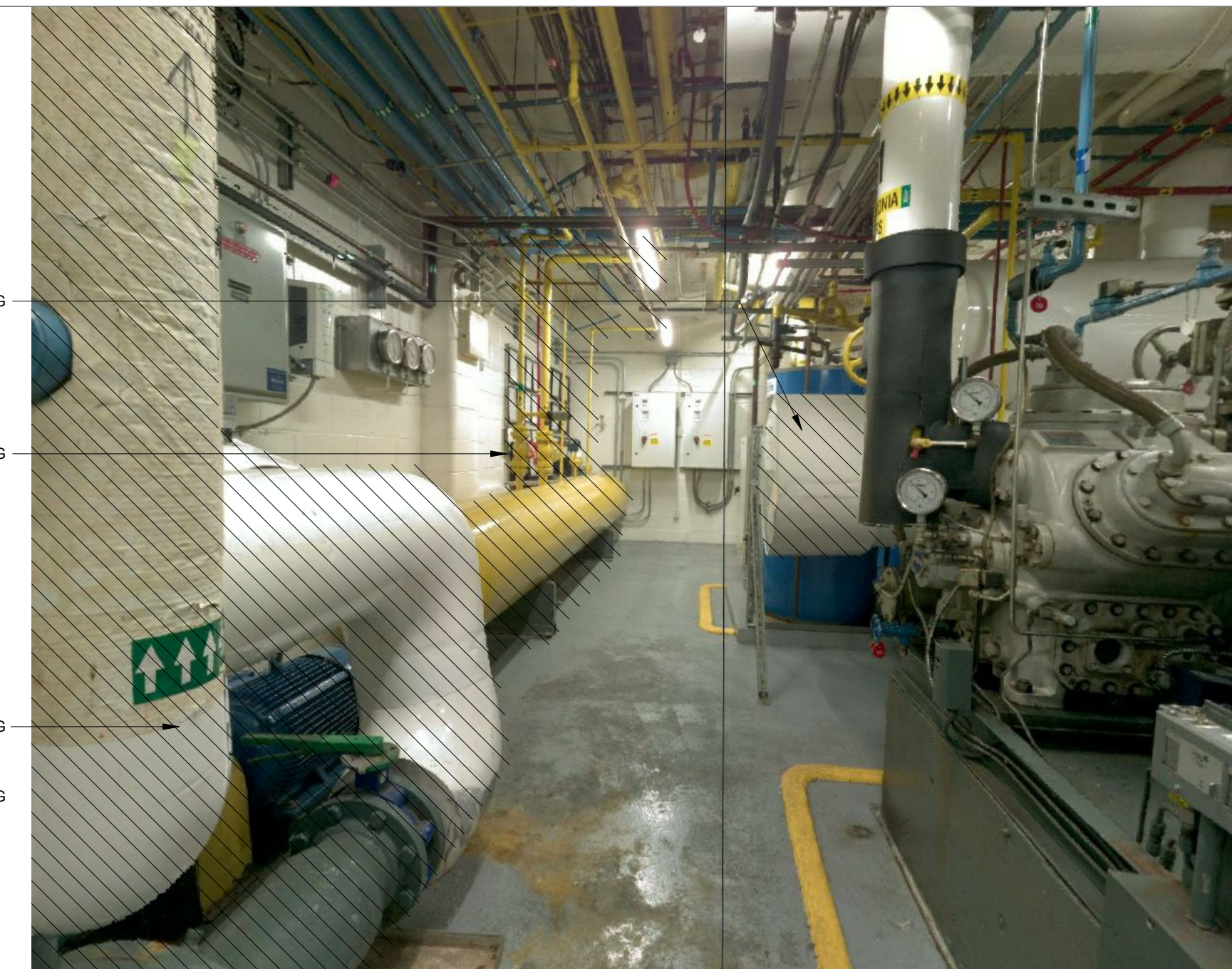
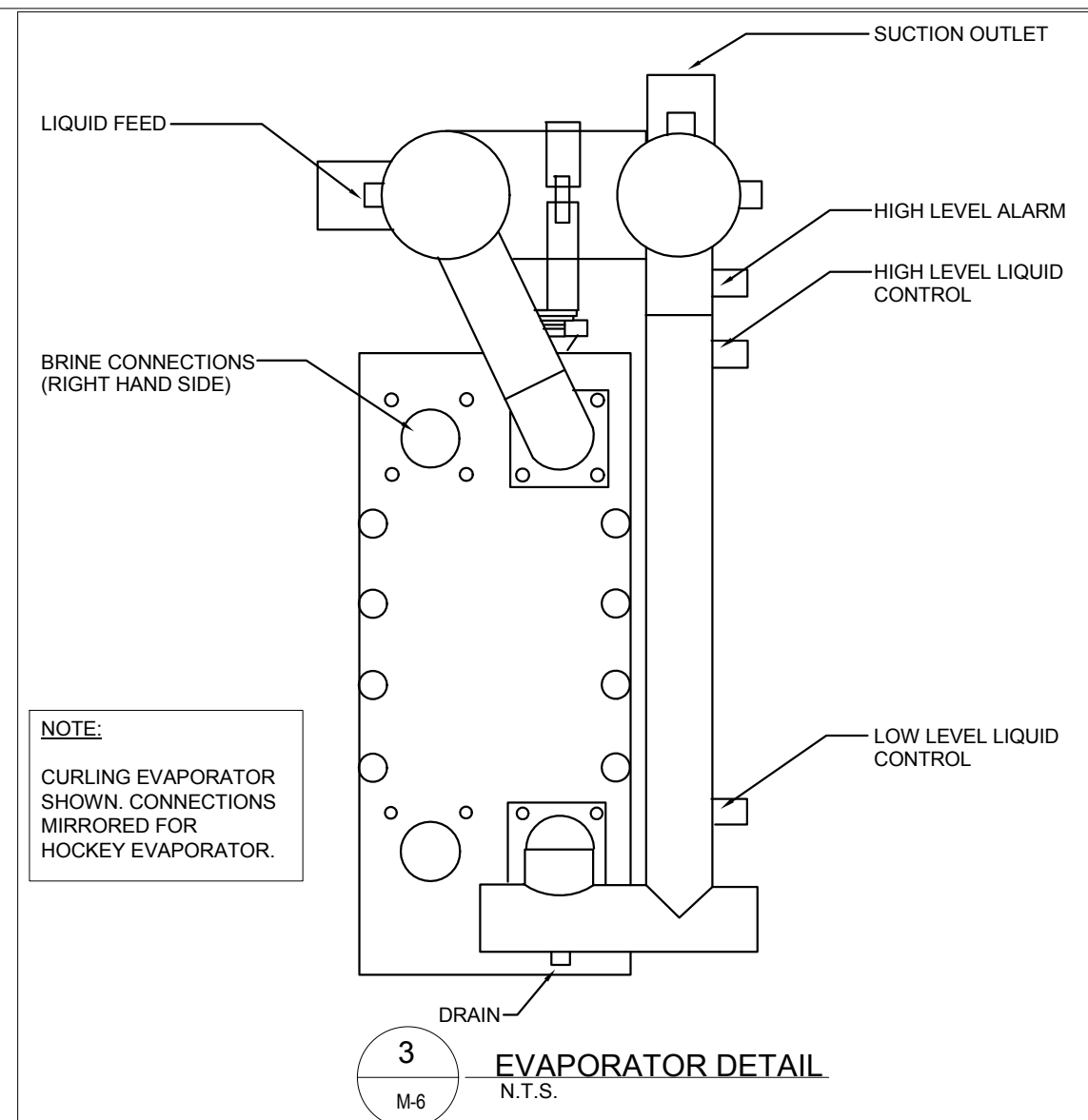
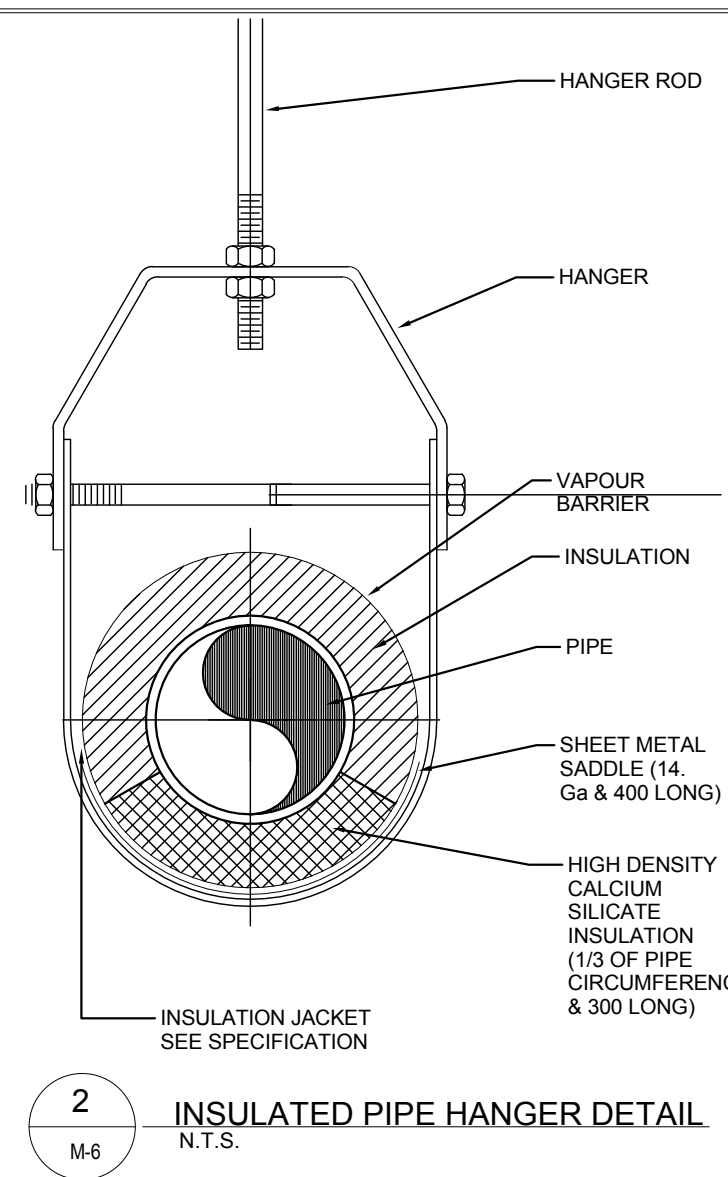
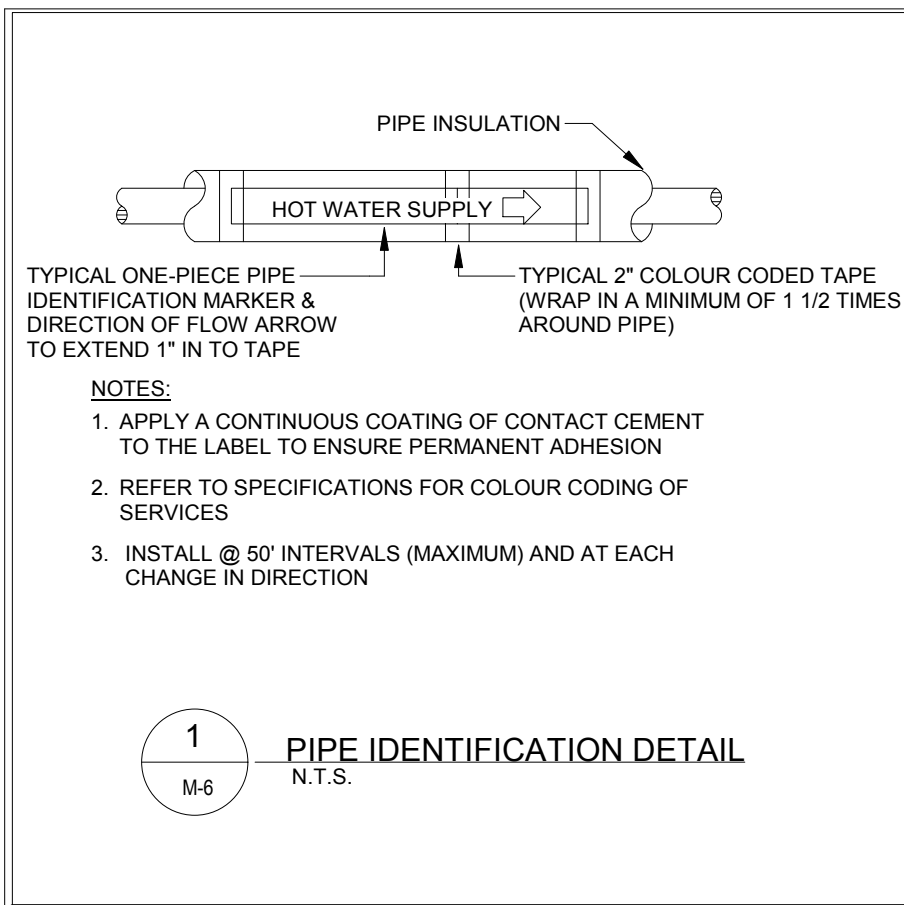
DRAWN: SL
 DESIGNED: KH
 CHECKED: KH
 DATE: 09 Mar 18
 SCALE: As indicated
 DRAWING NUMBER:

M-5

CERTIFICATE OF RECORD DRAWINGS

WE, FRASER VALLEY REFRIGERATION HEREBY CERTIFY THAT THE SET OF RECORD DRAWINGS ATTACHED HERETO, COMPRISED OF 7 SHEETS, IS A COMPLETE AND TOTAL RECORD OF THE BUILDING AS CONSTRUCTED. WE FURTHER CERTIFY THAT THE DRAWINGS SHOW ACCURATELY ALL MECHANICAL SERVICES, EXPOSED OR HIDDEN AND THAT THE OWNER MAY FULLY RELY ON THEIR ACCURACY IN ANY FUTURE CONTEMPLATED REPAIRS, MODIFICATIONS OR ADDITIONS TO THIS WORK.

CONTRACTOR:
 DATE:



PUMP SCHEDULE

UNIT NUMBER	MANUFACTURER	MODEL	SERVICE	LOCATION	PIPE INLET SIZE (in.)	PIPE OUTLET SIZE (in.)	POWER (HP)	DRIVE TYPE	FLOW RATE (GPM)	TOTAL HEAD (ft)	V/Phi/Hz	COMMENTS
P-1	ARMSTRONG	4030-6x5x10-25	HE-1	CHILLER ROOM	6	5	25.0	EXT. VFD	1000	55.0	480/3/60	C/W NEW VFD
P-2	ARMSTRONG	4030-6x4x8-15	HE-2	CHILLER ROOM	6	5	15.0	EXT. VFD	600	55.0	480/3/60	EXISTING VFD

AMMONIA EVAPORATOR (HEAT EXCHANGER) SCHEDULE

UNIT NUMBER	MANUFACTURER	MODEL	SERVICE	LOCATION	HEATING MEDIA	DIMENSIONS x L x H (in)	W	BRINE WATER CONNECTIONS (in)	AMMONIA CONNECTIONS (in)	AMMONIA				BRINE WATER SIDE								
										FLOW RATE (Lb/hr)	PRESSURE DROP (PSI)	ENTERING AMMONIA [°C (°F)]	LEAVING AMMONIA [°C (°F)]	CAPACITY (kW (MBH))	FLOW RATE [L/s (GPM)]	EWT [°C (°F)]	LWT [°C (°F)]	MEDIA	MAX P D [PSI]	CAPACITY (MBH)	WEIGHT (Lb)	COMMENTS
HE-1	ALPHA LAVAL	MK15BW-FD	ARENA EVAPORATOR	CH. RM	BRINE WATER	26x60x59		6	6	1835	0.385	-12 (10.4)	-12 (10.4)	224.8 (768)	50.4 (799)	-7.8 (18)	-9.0 (15.8)	BRINE WATER	14	224.8 (768)	3430	1,2,3A,4,5,6,7,8,9,10
HE-2	ALPHA LAVAL	M10BW-FD	AMMONIA EVAPORATOR	CH. RM	BRINE WATER	19x45x43		4	4	951.2	0.258	-10 (14)	-10 (14)	116.0 (396)	37.8 (599)	-6.2 (20.9)	-7 (19.4)	BRINE WATER	14	116.0 (396)	1140	1,2,3B,4,5,6,7,8,9,10

COMMENTS:
1. RELATIVE DIRECTION OF FLUIDS - COCURRENT 2. NUMBER OF PASSES - 1 3A) NUMBER OF PLATES 96 WITH EXTENSION CAPACITY OF 34 3B) NUMBER OF PLATES 80 WITH EXTENSION CAPACITY OF 54 4. PLATE MATERIAL / THICKNESS T1/0.60 MM 5. SEALING MATERIAL BRINE-NBRP CLIP-ON AMMONIA-WELDED 6. RING GASKET - CR CLIP-ON
7. CONNECTION MATERIAL - CARBON STEEL STUB END CARBON STEEL STUB END 8. LINING - TITANIUM 9. PRESSURE VESSEL CODE - ASME 10. HEAT EXCHANGER IS TO BE C/W U TURN SEPARATOR

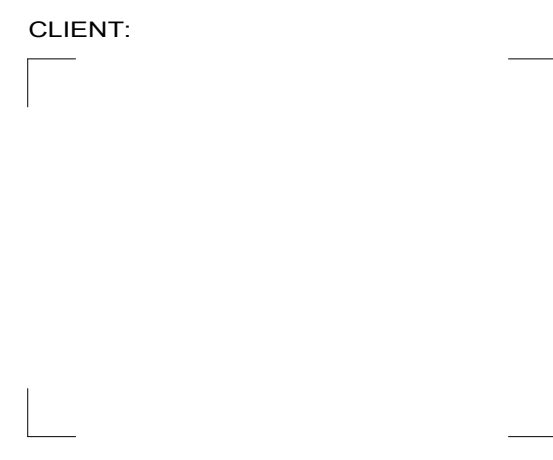
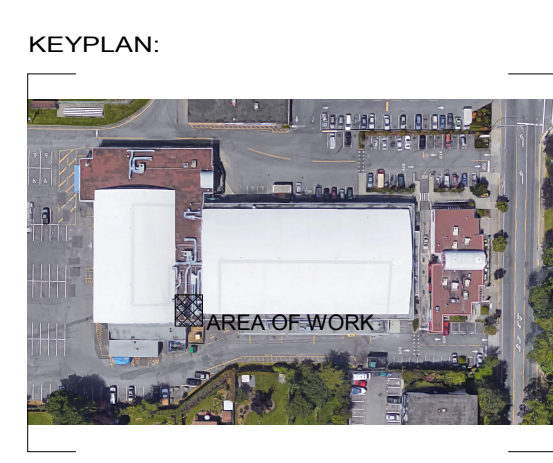
CERTIFICATE OF RECORD DRAWINGS

WE, FRASER VALLEY REFRIGERATION HEREBY CERTIFY THAT THE SET OF RECORD DRAWINGS ATTACHED HERETO, COMPRISED OF 7 SHEETS, IS A COMPLETE AND TOTAL RECORD OF THE BUILDING AS CONSTRUCTED. WE FURTHER CERTIFY THAT THE DRAWINGS SHOW ACCURATELY ALL MECHANICAL SERVICES, EXPOSED OR HIDDEN AND THAT THE OWNER MAY FULLY RELY ON THEIR ACCURACY IN ANY FUTURE CONTEMPLATED REPAIRS, MODIFICATIONS OR ADDITIONS TO THIS WORK.

CONTRACTOR:
DATE:

REVISION - RECORD

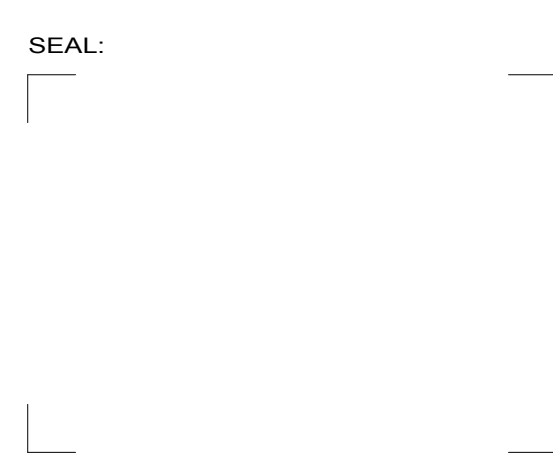
No.	DATE	DESCRIPTION	BY
1	09MAR18	ISSUED FOR TENDER	KH



ROCKY POINT ENGINEERING LTD.
Vancouver • Langley • Victoria • Nanaimo • Kelowna • Kamloops • Nelson

VICTORIA OFFICE
#202 - 1701 ISLAND HIGHWAY
VICTORIA, BC V9B 1J1

www.rpeing.ca
ph. 778-400-9525



PROJECT STATUS:

RECORD DRAWING

COPYRIGHT RESERVED:
Everything shown hereon is for use on this project only and may not be reproduced without the written permission of ROCKY POINT ENGINEERING LTD. and unless the reproduction carries their name.

PROJECT TITLE:
ARCHIE BROWNING CHILLER REPLACEMENT

CLIENT:
TOWNSHIP OF ESQUIMALT

DRAWING TITLE:
MECHANICAL DETAILS & PHOTOS

PROJECT NUMBER:
18080-S

DRAWN: SL
DESIGNED: KH
CHECKED: KH
DATE: 09 Mar 18
SCALE: As indicated
DRAWING NUMBER:

M-6