

CORPORATION OF THE TOWNSHIP OF ESQUIMALT

BYLAW NO. 2438

A Bylaw to authorize the exchange of land for Highway Purposes

WHEREAS, a 794.5 square metre portion of Lots A and B, Section 2, Esquimalt District, Plan 31541 was dedicated for highway purposes, on March 22nd, 1978;

AND WHEREAS, said portion of highway has not been developed as a road or used for public access purposes;

AND WHEREAS the Corporation of the Township of Esquimalt ("the Corporation") wishes to dispose of said portion of highway in exchange for an equivalent area of land adjacent to the Gorge Waterway and at the northerly extension of Glenvale Road;

NOW, THEREFORE, the Municipal Council of the Corporation in open meeting assembled, enacts as follows:

- 1) This bylaw may be cited as "HIGHWAY EXCHANGE BYLAW, 2000, NO. 2438".
- 2) All that part of Section 2, Esquimalt District, dedicated as Road on Plan 31541 comprising of 794.5 square metres and shown on a Reference Plan of Part of Section 2 (dedicated as road on Plan 31541), Part of Lot 1, Plan 7250, Part of Lot 2, Plan 10349, and Part of Lot A, Plan 31541, Section 2, all of Esquimalt District prepared by Michael Manson, B.C.L.S., and certified by him on the 23rd day of August, 2000, a print of which is attached hereto as Schedule "A" (herein after called "the Closed portion of the Highway"), is hereby stopped up and closed to traffic.
- 3) The Mayor and Clerk of the Corporation are hereby authorized to execute a Transfer and Plan and do all other such acts as may be necessary to convey the Closed Portion of the Highway to the registered owners of Lots A and B, Section 2, Esquimalt District, Plan 31541.
- 4) In exchange for the fee simple in the Closed Portion of the Highway the owners of Lot A, Section 2, Esquimalt District, Plan 31541, Lot 2, Section 2, Esquimalt District, Plan 10349, and Lot 1, Section 2, Esquimalt District, Plan 7250 shall convey to her Majesty The Queen in Right of the Province of British Columbia, for highway purposes, the area of land containing 794.7 square metres and described as "for road purposes" on the Reference Plan attached to this bylaw as Schedule "A".

Read a first time by the Municipal Council on August 28, 2000.

Read a second time by the Municipal Council on August 28, 2000.

Read a third time by the Municipal Council on August 28, 2000.

ADOPTED by the Municipal Council on October 23, 2000.



R. T. RISE
MAYOR

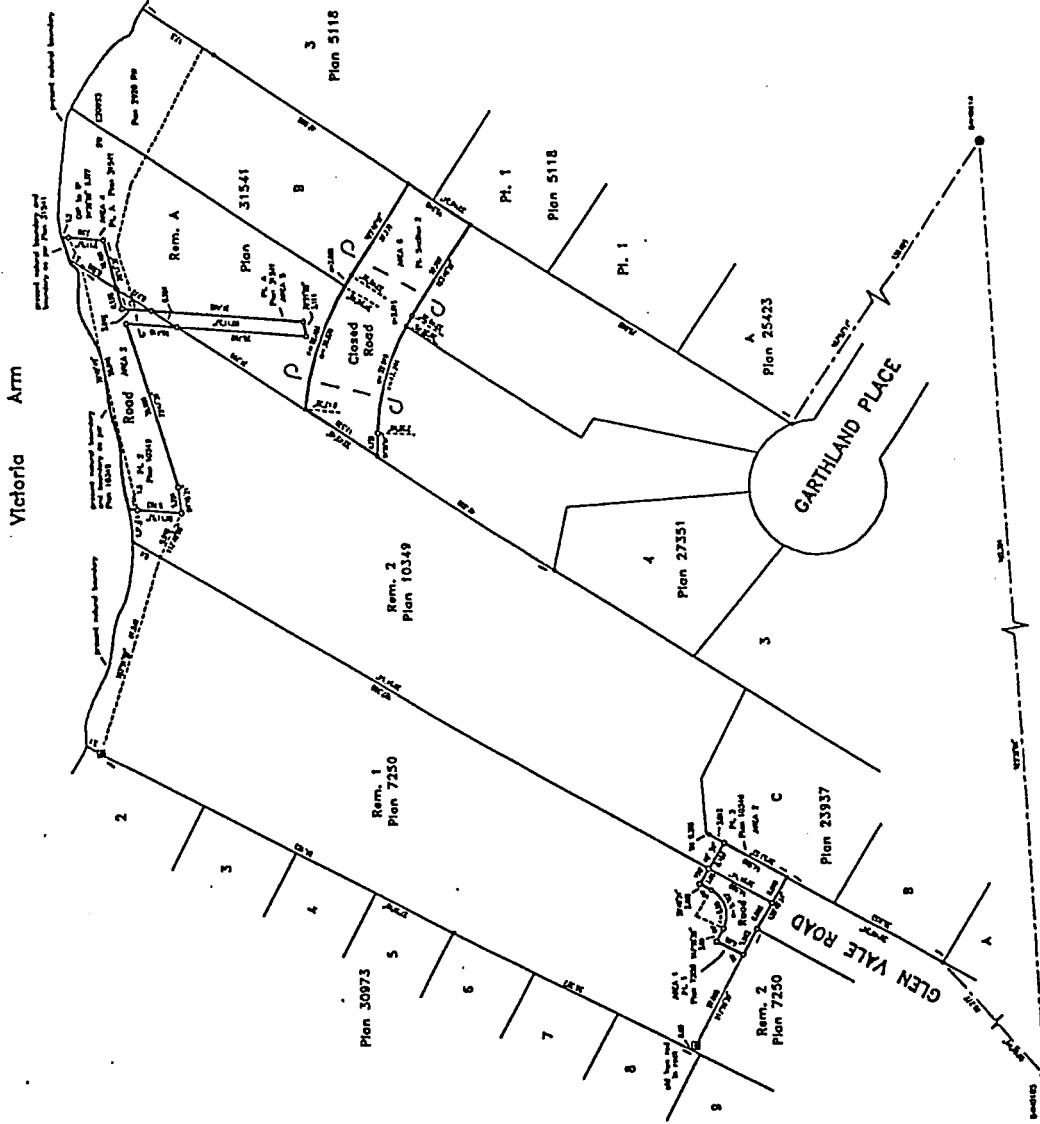


J. P. G. McLUCKIE
MUNICIPAL CLERK

PLAN

REFERENCE PLAN OF PART OF SECTION 2 (DEDICATED AS ROAD ON PLAN 31541), PART OF LOT 1, PLAN 7250, PART OF LOT 2, PLAN 10349, AND PART OF LOT A, PLAN 31541, SECTION 2, ALL OF ESQUIMALT DISTRICT, TO ACCOMPANY ROAD EXCHANGE BY-LAW NO. 2438 OF THE CORPORATION OF THE TOWNSHIP OF ESQUIMALT, PREPARED PURSUANT TO SECTION 120 OF THE LAND TITLE ACT

SCALE: 1:5000



Legend

- 1. All distances shown are in feet.
- 2. Standard line for road.
- 3. Standard line for road.
- 4. Standard line for road.
- 5. Standard line for road.
- 6. Standard line for road.
- 7. Standard line for road.
- 8. Standard line for road.
- 9. Standard line for road.
- 10. Standard line for road.
- 11. Standard line for road.
- 12. Standard line for road.
- 13. Standard line for road.
- 14. Standard line for road.
- 15. Standard line for road.
- 16. Standard line for road.
- 17. Standard line for road.
- 18. Standard line for road.
- 19. Standard line for road.
- 20. Standard line for road.
- 21. Standard line for road.
- 22. Standard line for road.
- 23. Standard line for road.
- 24. Standard line for road.
- 25. Standard line for road.
- 26. Standard line for road.
- 27. Standard line for road.
- 28. Standard line for road.
- 29. Standard line for road.
- 30. Standard line for road.
- 31. Standard line for road.
- 32. Standard line for road.
- 33. Standard line for road.
- 34. Standard line for road.
- 35. Standard line for road.
- 36. Standard line for road.
- 37. Standard line for road.
- 38. Standard line for road.
- 39. Standard line for road.
- 40. Standard line for road.
- 41. Standard line for road.
- 42. Standard line for road.
- 43. Standard line for road.
- 44. Standard line for road.
- 45. Standard line for road.
- 46. Standard line for road.
- 47. Standard line for road.
- 48. Standard line for road.
- 49. Standard line for road.
- 50. Standard line for road.
- 51. Standard line for road.
- 52. Standard line for road.
- 53. Standard line for road.
- 54. Standard line for road.
- 55. Standard line for road.
- 56. Standard line for road.
- 57. Standard line for road.
- 58. Standard line for road.
- 59. Standard line for road.
- 60. Standard line for road.
- 61. Standard line for road.
- 62. Standard line for road.
- 63. Standard line for road.
- 64. Standard line for road.
- 65. Standard line for road.
- 66. Standard line for road.
- 67. Standard line for road.
- 68. Standard line for road.
- 69. Standard line for road.
- 70. Standard line for road.
- 71. Standard line for road.
- 72. Standard line for road.
- 73. Standard line for road.
- 74. Standard line for road.
- 75. Standard line for road.
- 76. Standard line for road.
- 77. Standard line for road.
- 78. Standard line for road.
- 79. Standard line for road.
- 80. Standard line for road.
- 81. Standard line for road.
- 82. Standard line for road.
- 83. Standard line for road.
- 84. Standard line for road.
- 85. Standard line for road.
- 86. Standard line for road.
- 87. Standard line for road.
- 88. Standard line for road.
- 89. Standard line for road.
- 90. Standard line for road.
- 91. Standard line for road.
- 92. Standard line for road.
- 93. Standard line for road.
- 94. Standard line for road.
- 95. Standard line for road.
- 96. Standard line for road.
- 97. Standard line for road.
- 98. Standard line for road.
- 99. Standard line for road.
- 100. Standard line for road.

PLAN	DATE	BY	FOR
1	2011/07	10	10
2	2011/07	10	10
3	2011/07	10	10
4	2011/07	10	10
5	2011/07	10	10
6	2011/07	10	10
7	2011/07	10	10
8	2011/07	10	10
9	2011/07	10	10
10	2011/07	10	10
11	2011/07	10	10
12	2011/07	10	10
13	2011/07	10	10
14	2011/07	10	10
15	2011/07	10	10
16	2011/07	10	10
17	2011/07	10	10
18	2011/07	10	10
19	2011/07	10	10
20	2011/07	10	10
21	2011/07	10	10
22	2011/07	10	10
23	2011/07	10	10
24	2011/07	10	10
25	2011/07	10	10
26	2011/07	10	10
27	2011/07	10	10
28	2011/07	10	10
29	2011/07	10	10
30	2011/07	10	10
31	2011/07	10	10
32	2011/07	10	10
33	2011/07	10	10
34	2011/07	10	10
35	2011/07	10	10
36	2011/07	10	10
37	2011/07	10	10
38	2011/07	10	10
39	2011/07	10	10
40	2011/07	10	10
41	2011/07	10	10
42	2011/07	10	10
43	2011/07	10	10
44	2011/07	10	10
45	2011/07	10	10
46	2011/07	10	10
47	2011/07	10	10
48	2011/07	10	10
49	2011/07	10	10
50	2011/07	10	10
51	2011/07	10	10
52	2011/07	10	10
53	2011/07	10	10
54	2011/07	10	10
55	2011/07	10	10
56	2011/07	10	10
57	2011/07	10	10
58	2011/07	10	10
59	2011/07	10	10
60	2011/07	10	10
61	2011/07	10	10
62	2011/07	10	10
63	2011/07	10	10
64	2011/07	10	10
65	2011/07	10	10
66	2011/07	10	10
67	2011/07	10	10
68	2011/07	10	10
69	2011/07	10	10
70	2011/07	10	10
71	2011/07	10	10
72	2011/07	10	10
73	2011/07	10	10
74	2011/07	10	10
75	2011/07	10	10
76	2011/07	10	10
77	2011/07	10	10
78	2011/07	10	10
79	2011/07	10	10
80	2011/07	10	10
81	2011/07	10	10
82	2011/07	10	10
83	2011/07	10	10
84	2011/07	10	10
85	2011/07	10	10
86	2011/07	10	10
87	2011/07	10	10
88	2011/07	10	10
89	2011/07	10	10
90	2011/07	10	10
91	2011/07	10	10
92	2011/07	10	10
93	2011/07	10	10
94	2011/07	10	10
95	2011/07	10	10
96	2011/07	10	10
97	2011/07	10	10
98	2011/07	10	10
99	2011/07	10	10
100	2011/07	10	10

PLAN	DATE	BY	FOR
1	2011/07	10	10
2	2011/07	10	10
3	2011/07	10	10
4	2011/07	10	10
5	2011/07	10	10
6	2011/07	10	10
7	2011/07	10	10
8	2011/07	10	10
9	2011/07	10	10
10	2011/07	10	10
11	2011/07	10	10
12	2011/07	10	10
13	2011/07	10	10
14	2011/07	10	10
15	2011/07	10	10
16	2011/07	10	10
17	2011/07	10	10
18	2011/07	10	10
19	2011/07	10	10
20	2011/07	10	10
21	2011/07	10	10
22	2011/07	10	10
23	2011/07	10	10
24	2011/07	10	10
25	2011/07	10	10
26	2011/07	10	10
27	2011/07	10	10
28	2011/07	10	10
29	2011/07	10	10
30	2011/07	10	10
31	2011/07	10	10
32	2011/07	10	10
33	2011/07	10	10
34	2011/07	10	10
35	2011/07	10	10
36	2011/07	10	10
37	2011/07	10	10
38	2011/07	10	10
39	2011/07	10	10
40	2011/07	10	10
41	2011/07	10	10
42	2011/07	10	10
43	2011/07	10	10
44	2011/07	10	10
45	2011/07	10	10
46	2011/07	10	10
47	2011/07	10	10
48	2011/07	10	10
49	2011/07	10	10
50	2011/07	10	10
51	2011/07	10	10
52	2011/07	10	10
53	2011/07	10	10
54	2011/07	10	10
55	2011/07	10	10
56	2011/07	10	10
57	2011/07	10	10
58	2011/07	10	10
59	2011/07	10	10
60	2011/07	10	10
61	2011/07	10	10
62	2011/07	10	10
63	2011/07	10	10
64	2011/07	10	10
65	2011/07	10	10
66	2011/07	10	10
67	2011/07	10	10
68	2011/07	10	10
69	2011/07	10	10
70	2011/07	10	10
71	2011/07	10	10
72	2011/07	10	10
73	2011/07	10	10
74	2011/07	10	10
75	2011/07	10	10
76	2011/07	10	10
77	2011/07	10	10
78	2011/07	10	10
79	2011/07	10	10
80	2011/07	10	10
81	2011/07	10	10
82	2011/07	10	10
83	2011/07	10	10
84	2011/07	10	10
85	2011/07	10	10
86	2011/07	10	10
87	2011/07	10	10
88	2011/07	10	10
89	2011/07	10	10
90	2011/07	10	10
91	2011/07	10	10
92	2011/07	10	10
93	2011/07	10	10
94	2011/07	10	10
95	2011/07	10	10
96	2011/07	10	10
97	2011/07	10	10
98	2011/07	10	10
99	2011/07	10	10
100	2011/07	10	10

23rd August 2011
Michael S. McNamee

ALL INFORMATION IS ACCURATE
AS FAR AS THE SURVEYOR IS AWARE
DATE: 23rd August 2011

SCHEDULE "A" OF
BYLAW NO. 2438