

SUBMITTAL REVIEW

SR-01



Project: ERC Natatorium Dehumidification Upgrade

Project No: 2611

Date Received: 2026-05-04

Client: Township of Esquimalt

Date Returned: 2026-06-04

Prime Contr: N/A

Reviewed By: L. Ippersiel

Sub Contr: N/A

Phone No: 778.700.1086 ex 64

Items: Dehumidifier AHU-1

This review is for the sole purpose of ascertaining conformance with the general design concept. This review shall not mean that the Consultant approves the detail design inherent in the shop drawings, responsibility for which shall remain with the Contractor submitting same and such review shall not relieve the Contractor of his responsibility for meeting all requirements of the Construction and Contract Documents. The Contractor is responsible for dimensions to be confirmed and correlated at the job site for information that pertains solely to fabrication processes or to techniques of construction and installation and for the co-ordination of the work of all sub-trades.

Reviewed

Revise & Resubmit

Reviewed as Noted

Not Reviewed

Comments:

1. Refer to review comments in attached shop drawing.

END OF SUBMITTAL REVIEW

DRAWING TRANSMITTAL SHEET



JOB NO. EH05-26-00001

DATE May 04, 2026

VANCOUVER SALES OFFICE

303 - 8988 FRASERTON COUR
BURNABY BC
V5J 5H8
(604) 736-2420

CANADIAN HEAD OFFICE

CALGARY AB

CANADIAN FACTORY

CALGARY AB,
EDMONTON AB,
NEWMARKET ON

OTHER CANADIAN SALES OFFICES

EDMONTON, CALGARY, REGINA,
SASKATOON, WINNIPEG, LONDON,
SUDBURY, TORONTO, HAMILTON,
OTTAWA, MONTREAL, HALIFAX, MONCTON

CONTRACTOR Township of Esquimalt

ADDRESS 527 Fraser Street

Esquimalt, BC

V9A 6H6

ENGINEER Polar Engineering

JOB NAME Esquimalt Recreation Centre

this order is subject to approval. manufacturing is held pending return of one approved copy of these forms to the indicated office.

this order is not subject to approval and is being manufactured according to the attached forms.

copies enclosed	description
1	<p>EngA preliminary submittal for AHU-1</p> <hr/> <hr/> <hr/> <hr/> <p>Note: Formal submittals to follow once PO is provided.</p> <div style="border: 1px solid red; padding: 5px; margin: 10px 0;"> <p style="color: red;">Submittal Review</p> <p style="color: red;">REVIEWED AS NOTED</p> <p style="color: red;">L. Ippersiel, Polar Engineering June 4, 2026</p> </div> <p style="color: red;">- Include unit supply air performance with three fans operational. - Include unit return/exhaust air performance with three fans operational.</p>

per Gavin McCallum



PRELIMINARY SUBMITTAL

JOB NAME: ESQUIMALT RECREATION CENTRE
CUSTOMER: Township of Esquimalt
EngA MODEL: LMD30/C/MV/H

JOB NO: - **QTY:** 1
ENGINEER: Polar Engineering
TAG: AHU-1

SHIPPING AND APPROVAL INFORMATION

MOUNTING <u>Outdoor, Base Mounted</u>	ACCESS <u>As Per Drawing</u>
UNIT IS IN <u>1</u> PIECE	ESTIMATED WEIGHT <u>23,500 lbs (10,669 kg)</u>
<ul style="list-style-type: none"> - Intertek cETL Canada approval - Unit Operates at the altitude of 0 ft (0-2,000 ft) (0 m, 0-610 m) - Shop Drawings to include: Base Frame Drawing, Corner Weight & Center of Gravity Estimates, Sound Calculations, Test Reports - Unit Ambient: 0° F 	

In service weight not to exceed 23,500 lbs to avoid triggering structural roof upgrades. Closer to original unit weight of 21,000 lbs preferred.

SUPPLY AIR DATA

AIR FLOW <u>32,000 SCFM (15,104 l/s)</u>	FAN SIZE <u>2x2 EPFN Array 222 Class I</u>	TSP <u>3.54" w.c. (881 Pa)</u>	RPM <u>1,834</u>
MOTOR SIZE <u>10 HP (7.46 kW)</u>	TYPE (RPM) <u>TEFC (1800)</u>	ESP <u>1.25" w.c. (311 Pa)</u>	BHP <u>7.28 HP (5.43 kW)</u>
<ul style="list-style-type: none"> - Supply air fan/motor c/w Seismic 1" (25 mm) Spring isolation, epoxy coat all steel components - Drives have a service factor of 1 <ul style="list-style-type: none"> - VFD For Air Balancing - VFD mounted Inside EngA Cabinet to be Ventilated 			

RETURN AIR DATA

AIR FLOW <u>36,000 SCFM (16,992 l/s)</u>	FAN SIZE <u>2x2 EPFN Array 222 Class II</u>	TSP <u>3.50" w.c. (872 Pa)</u>	RPM <u>1,943</u>
MOTOR SIZE <u>10 HP (7.46 kW)</u>	TYPE (RPM) <u>TEFC Super-E (1800)</u>	ESP <u>0.50" w.c. (125 Pa)</u>	BHP <u>8.39 HP (6.26 kW)</u>
<ul style="list-style-type: none"> - Return air fan/motor c/w Seismic 1" (25 mm) Spring isolation, epoxy coat all steel components - Drives have a service factor of 1 <ul style="list-style-type: none"> - VFD For Air Balancing - VFD mounted Inside EngA Cabinet to be Ventilated 			

AIR OPENING DATA

AIR OPENING	LOCATION	DAMPER TYPE	OPERATION
Return Air	Left Side		
Outside Air	Top		Modulating Spring Return
Exhaust Air	Top		Modulating Spring Return
Supply Air	Front		
Exhaust Air	Top/Back	Tamco Series 1000 SW Aluminum Airfoil Damper - Uninsulated	2 Position (Spring Return)
Fan Array inlet		Tamco Series 7600 SW Aluminum Airfoil Damper - Uninsulated	Gravity

CONSTRUCTION DATA

UNIT CABINET	<u>18 Gauge Satin Coat Galvanized Sheet Metal 2" x 3 lb/ft3 insulation (51 mm x 48 kg/m3) Insulation</u>
UNIT LINER	<u>22 Gauge Solid 5052 Aluminum</u>
UNIT FLOOR	<u>0.080" (12 Gauge) Checkerplate Painted</u>
EXTERIOR PAINT	<u>Two Component Epoxy W/ Polyurethane Top Coat Level 3 Aluminum Grey</u>
SECTION DRAIN PAN	<u>18 Gauge Satin Coat - SP to indicate where floor plans required for pool</u>
AIRSIDE DOOR	<u>Eng A Standard Door Lever Handles c/w T Hinge</u>
SERVICE DOOR	<u>Eng A Standard Door Lever Handles c/w T Hinge</u>
<ul style="list-style-type: none"> - Single Side Access - Low leak construction tested to 5" w.c. (1245 Pa) - Critical dimensions: 344"L x 104"W, S/A, R/A locn due to existing unit dimensions - Standard hood 	

PRELIMINARY SUBMITTAL - NOT FOR CONSTRUCTION

Date: 5/4/2026

- 1 -

SUBMITTED BY

Gavin McCallum



PRELIMINARY SUBMITTAL

JOB NAME: ESQUIMALT RECREATION CENTRE
CUSTOMER: Township of Esquimalt
EngA MODEL: LMD30/C/MV/H

JOB NO: - **QTY:** 1
ENGINEER: Polar Engineering
TAG: AHU-1

ELECTRICAL DATA

CIRCUIT	POWER SUPPLY	MINIMUM CIRCUIT AMPACITY	MAXIMUM FUSE/BREAKER
1	575/3/60	96.0 AMPS	100 AMPS
<ul style="list-style-type: none"> - See Electrical Data Sheet for Details - Unit Mounted By Others Disconnect Switch - Unit includes convenience circuit with: <ul style="list-style-type: none"> - Amp - Single Point Power Connection with - (1) Outdoor Light Switch W/ Indicating Light - (7) 2 foot LED Light Bar (See mechanical drawing for location) 			

FILTER SECTION DATA - SIDE LOADED

FILTER TYPE	2" (51 mm) Extended Media (Pleated) Filter with MERV 13 rating and 316 SS Metal Frame.
<ul style="list-style-type: none"> - Filters may be shipped loose or mounted in the tracks. - Photohelic gauge - Clogged Filter Switch To BMS - 316 Stainless Steel Filter Tracks 	

RETURN FILTER SECTION DATA - SIDE LOADED

FILTER TYPE	2" (51 mm) Extended Media (Pleated) Filter with MERV 8 rating and 316 SS Metal Frame.
<ul style="list-style-type: none"> - Filters may be shipped loose or mounted in the tracks. - Photohelic gauge - Clogged Filter Switch To BMS - 316 Stainless Steel Filter Tracks 	

Assumed MBH

HYDRONIC HEATING COIL DATA Post-heat coil

COIL SIZE	(1) 93.00 (2362) X 90.00 (2286) X 1R X 7FPI	VELOCITY	550 FPM (2.79 m/s)
CAPACITY	359 BTUH (0.1 kW)	AIR P.D.	0.09 in w.c. (22.41 Pa)
ENTERING AIR DB	55.0°F (12.8 °C)	LEAVING AIR DB	65.4°F (18.6 °C)
FLUID MEDIUM	Water	CONN. SIZE (IN & OUT)	2" - (2 1/8") Diameter
FLUID FLOW RATE	34.8 GPM (2.2 l/s)	FLUID P.D.	1.41 ft w.c. (4 kPa)
	ENTERING FLUID TEMP	LVG. FLUID TEMP	120.0°F (48.9 °C) 99.2°F (37.3 °C)
<ul style="list-style-type: none"> - See attached coil performance sheet - 5/8" (16 mm) CU/AL heating coil c/w Copper FPT Connection (Threaded) headers, 18 gauge G90 casing, Heresite Coated 			

HYDRONIC HEATING COIL DATA E/A heat rejection coil

COIL SIZE	(1) 40.50 (1029) X 90.00 (2286) X 8R X 12FPI	VELOCITY	499 FPM (2.53 m/s)
CAPACITY	303 BTUH (0.1 kW)	AIR P.D.	0.86 in w.c. (214.14 Pa)
ENTERING AIR DB	84.0°F (28.9 °C)	LEAVING AIR DB	108.0°F (42.2 °C)
FLUID MEDIUM	Water	CONN. SIZE (IN & OUT)	3" - (3 1/8") Diameter
FLUID FLOW RATE	100.0 GPM (6.3 l/s)	FLUID P.D.	11.24 ft w.c. (34 kPa)
	ENTERING FLUID TEMP	LVG. FLUID TEMP	110.0°F (43.3 °C) 103.9°F (39.9 °C)
<ul style="list-style-type: none"> - See attached coil performance sheet - 5/8" (16 mm) CU/AL heating coil c/w Copper FPT Connection (Threaded) headers, 18 gauge G90 casing, Heresite Coated 			

PRELIMINARY SUBMITTAL - NOT FOR CONSTRUCTION

Date: 5/4/2026

- 2 -

SUBMITTED BY

Gavin McCallum



PRELIMINARY SUBMITTAL

JOB NAME: ESQUIMALT RECREATION CENTRE
CUSTOMER: Township of Esquimalt
EngA MODEL: LMD30/C/MV/H

JOB NO: - **QTY:** 1
ENGINEER: Polar Engineering
TAG: AHU-1

✓ HYDRONIC COOLING COIL DATA

COIL SIZE	(1) 93.00 (2362) X 90.00 (2286) X 8R X 10FPI	VELOCITY	543 FPM (2.76 m/s)
TOTAL CAPACITY	1,488,000 BTUH (436.1 kW)	AIR P.D.	1.47 in w.c. (366 Pa)
SENSIBLE CAPACITY	987 BTUH (0.3 kW)	MOISTURE REMOVAL	441.1 lb/hr (200.3 kg/hr)
ENTERING AIR DB/WB	84.0°F / 69.8°F (28.9 °C / 21.0 °C)	LEAVING AIR DB / WB	55.4°F / 55.4°F (13.0 °C / 13.0 °C)
FLUID MEDIUM	20% Propylene Glycol	CONN. SIZE (IN & OUT)	4" - (4 1/8") Diameter
FLUID FLOW RATE	210.0 GPM (13.2 l/s)	ENTERING FLUID TEMP	45.0°F (7.2 °C)
		FLUID P.D.	14.52 ft w.c. (43 kPa)
		LVG. FLUID TEMP	59.7°F (15.4 °C)

- See attached coil performance sheet
- 5/8" (16 mm) CU/AL cooling coil c/w Copper FPT Connection (Threaded) headers, insulated header cover, 18 gauge G90 casing, Heresite Coated
- Coil is controlled by By Others and None
- Cooling locked out below 0°F (-17.8 °C) ambient

✓ FUNCTION

Non-fused disconnect switch (by others) 'on', service switch 'on', fire alarm contact (by others) 'closed' (jumper if not required).

Unit on/off contact (by others) 'closed'. Exhaust air damper opens. Mixing dampers enabled, and modulate via a 0-10 VDC signal (by others). Once end switch for exhaust dampers are closed. Blower(s) are enabled and run continuously. VFDs are for air balancing. The water heating coil valve (by others) is modulated via 0-10 VDC signal (by others). The 20% PG cooling coil valve (by others) is modulated via 0-10 VDC signal (by others). The water heating (heat rejection) valve (by others) is modulated via 0-10VDC signal (by others). When heat rejection bypass contact closed heat rejection coil bypass damper opens to allow 24,300 CFM bypass the coil (100% exhaust from the space).

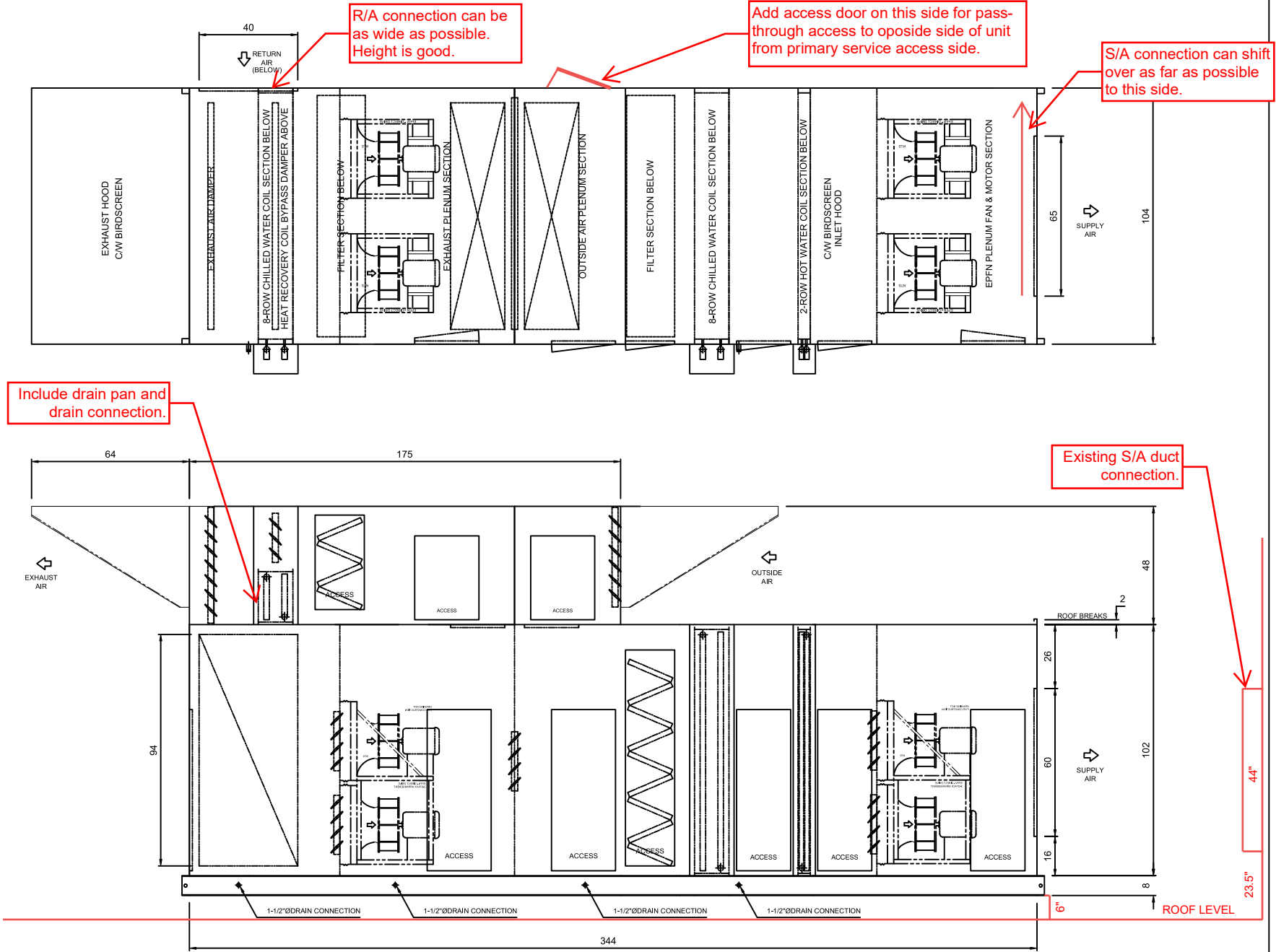
Unit on/off contact (by others) 'open', damper(s) close, and blower(s) shut down. Unit is off.

Fire alarm contact (by others) 'open', equipment operation is disabled immediately.

Low limit by others.

Controls points:

- Unit on/off contact
- 0-10VDC for mixing box
- heat rejection coil bypass contact
- SA and RA Current output from VFDs - terminalized
- SA and RA Clogged filter contact



ESTIMATED UNIT WEIGHT: 23,500 LBS

DOOR SIZES AND INTERNAL COMPONENTS ARE APPROX. VALUES. DIMENSIONS SHOWN IN INCHES ONLY UNLESS OTHERWISE NOTED.

ESQUIMALT RECREATION CENTRE
TAG: AHU-1

PRELIMINARY DRAWING ONLY - NOT FOR CONSTRUCTION.
LMD30/C/H/O



REVISIONS: 2
DATE: MAY 4, 2026

DRWN BY: GKM

CHKD BY: -

DRWG NO.: POLAR ENG.

Job Name: ESQUIMALT RECREATION CENTRE
 Customer: _____
 Location: Victoria, BC

 Job No.: C6-16-28
 Tag No.: AHU-1
 Altitude: 228 feet

	Case #2
Coil Tag	CC
Service	Cooling
Total Capacity - MBH (kW)	1,488 (436.2)
Net Capacity - MBH (kW)	-
Sensible Capacity - MBH (kW)	987 (289.2)
Water Removal - lb/hr (kg/h)	441.1 (200.1)
Airflow Conditions	SCFM
Total / Coil Airflow - CFM (l/s)	32,000 (15,104.0) / 32,000 (15,104.0)
Air EDBT / EWBT - °F (°C)	84.0 (28.9) / 69.8 (21.0)
Coil LDBT / LWBT - °F (°C)	55.4 (13.0) / 55.4 (13.0)
Supply LDBT / LWBT - °F (°C)	55.4 (13.0) / 55.4 (13.0)
Coil Velocity - FPM (m/s)	543 (2.76)
Pressure Drop - in w.c. (Pa)	1.47 (365.3)
S/A Motor - BHP (kW) @Eff.	-
Blower Arrangement	-
Coil Information	-
Coil #1 Size - (Qty) H x W x R x FPI - in(mm)	(1) 93(2,362) x 90(2,286) x 8/10
Coil #1 Header Size - in (mm)	4 (102)
Coil #1 Pass-Leads-Blank	8P - 62L - 0B
Coil #2 Size - (Qty) H x W x R x FPI - in(mm)	-
Coil #2 Header Size - in(mm)	-
Coil #2 Pass-Leads-Blank	-
Tube Size - in (mm) / Material	5/8 (16) Copper
Fin Type / Material	Corrugated- 0.0065(Std.) / Aluminum
Lamiflo Coil	NO
Tube Velocity - FPS (m/s) / Pressure Drop - ft w.c. (kPa)	3.7 (1.1) / 14.52 (43.41)
Coil #1 Drain Pan length - in (mm) / No of Mid Pan(s)	14 (360) / 1
Coil #2 Drain Pan length - in (mm) / No of Mid Pan(s)	-
Media	Propylene-Glycol (20%)
Entering Temperature - °F (°C)	45 (7.2)
Leaving Temperature - °F (°C)	59.7 (15.4)
Flow Rate - GPM (l/s)	210.0 (13.24)
Fouling Factor allowance	0.0001
Notes	1, 4, 8, 19

Notes:

- [1] Certified in accordance with the AHRI Forced - Circulation Air - Cooling and Air-heating Coils Certification Program which is based on AHRI Standard 410 within the Range of Standard Rating Conditions listed in Table 1 of the Standard. Certified units may be found in the AHRI Directory at www.ahridirectory.org.
- [4] Fluid inlet and outlet connections are located on the same end.
- [8] Water Pressure Drop Exceeds 10 ft.wc.
- [19] Drain Pan Is Over 10 inch.

Job Name: ESQUIMALT RECREATION CENTRE
 Customer: _____
 Location: Victoria, BC

Job No.: C6-16-28
 Tag No.: AHU-1
 Altitude: 228 feet

	Case #1
Coil Tag	HEATING
Service	Heating
Total Capacity - MBH (kW)	359 (105.2)
Net Capacity - MBH (kW)	-
Sensible Capacity - MBH (kW)	359 (105.2)
Water Removal - lb/hr (kg/h)	0.0 (0.0)
Airflow Conditions	SCFM
Total / Coil Airflow - CFM (l/s)	32,000 (15,104.0) / 32,000 (15,104.0)
Air EDBT / EWBT - °F (°C)	55.0 (12.8)
Coil LDBT / LWBT - °F (°C)	65.4 (18.6)
Supply LDBT / LWBT - °F (°C)	65.4 (18.6)
Coil Velocity - FPM (m/s)	550 (2.79)
Pressure Drop - in w.c. (Pa)	0.09 (22.8)
S/A Motor - BHP (kW) @Eff.	-
Blower Arrangement	-
Coil Information	-
Coil #1 Size - (Qty) H x W x R x FPI - in(mm)	(1) 93(2,362) x 90(2,286) x 1/7
Coil #1 Header Size - in (mm)	2 (51)
Coil #1 Pass-Leads-Blank	2P - 31L - 0B
Coil #2 Size - (Qty) H x W x R x FPI - in(mm)	-
Coil #2 Header Size - in(mm)	-
Coil #2 Pass-Leads-Blank	-
Tube Size - in (mm) / Material	5/8 (16) Copper
Fin Type / Material	Corrugated- 0.0065(Std.) / Aluminum
Lamiflo Coil	NO
Tube Velocity - FPS (m/s) / Pressure Drop - ft w.c. (kPa)	1.2 (0.4) / 1.41 (4.21)
Coil #1 Drain Pan length - in (mm) / No of Mid Pan(s)	-
Coil #2 Drain Pan length - in (mm) / No of Mid Pan(s)	-
Media	Water
Entering Temperature - °F (°C)	120 (48.9)
Leaving Temperature - °F (°C)	99.2 (37.3)
Flow Rate - GPM (l/s)	34.8 (2.19)
Fouling Factor allowance	0.0001
Notes	1, 4

Notes:

- [1] Certified in accordance with the AHRI Forced - Circulation Air - Cooling and Air-heating Coils Certification Program which is based on AHRI Standard 410 within the Range of Standard Rating Conditions listed in Table 1 of the Standard. Certified units may be found in the AHRI Directory at www.ahridirectory.org.
- [4] Fluid inlet and outlet connections are located on the same end.

Job Name: ESQUIMALT RECREATION CENTRE
 Customer: _____
 Location: Victoria, BC

Job No.: C6-16-28
 Tag No.: AHU-1
 Altitude: 228 feet

	Case #2
Coil Tag	HEAT REJECT
Service	Heating
Total Capacity - MBH (kW)	303 (88.7)
Net Capacity - MBH (kW)	-
Sensible Capacity - MBH (kW)	303 (88.7)
Water Removal - lb/hr (kg/h)	0.0 (0.0)
Airflow Conditions	SCFM
Total / Coil Airflow - CFM (l/s)	36,000 (16,992.0) / 11,700 (5,522.4)
Air EDBT / EWBT - °F (°C)	84.0 (28.9)
Coil LDBT / LWBT - °F (°C)	108.0 (42.2)
Supply LDBT / LWBT - °F (°C)	91.8 (33.2)
Coil Velocity - FPM (m/s)	499 (2.53)
Pressure Drop - in w.c. (Pa)	0.86 (214.4)
S/A Motor - BHP (kW) @Eff.	-
Blower Arrangement	-
Coil Information	-
Coil #1 Size - (Qty) H x W x R x FPI - in(mm)	(1) 40.5(1,029) x 90(2,286) x 8/12
Coil #1 Header Size - in (mm)	3 (76)
Coil #1 Pass-Leads-Blank	8P - 27L - 0B
Coil #2 Size - (Qty) H x W x R x FPI - in(mm)	-
Coil #2 Header Size - in(mm)	-
Coil #2 Pass-Leads-Blank	-
Tube Size - in (mm) / Material	5/8 (16) Copper
Fin Type / Material	Corrugated- 0.0065(Std.) / Aluminum
Lamiflo Coil	NO
Tube Velocity - FPS (m/s) / Pressure Drop - ft w.c. (kPa)	4.0 (1.2) / 11.24 (33.59)
Coil #1 Drain Pan length - in (mm) / No of Mid Pan(s)	-
Coil #2 Drain Pan length - in (mm) / No of Mid Pan(s)	-
Media	Water
Entering Temperature - °F (°C)	110 (43.3)
Leaving Temperature - °F (°C)	103.9 (39.9)
Flow Rate - GPM (l/s)	100.0 (6.31)
Fouling Factor allowance	0.0001
Notes	3, 4, 8

Notes:

- [3] Coil is NOT certified by AHRI.
- [4] Fluid inlet and outlet connections are located on the same end.
- [8] Water Pressure Drop Exceeds 10 ft.wc.



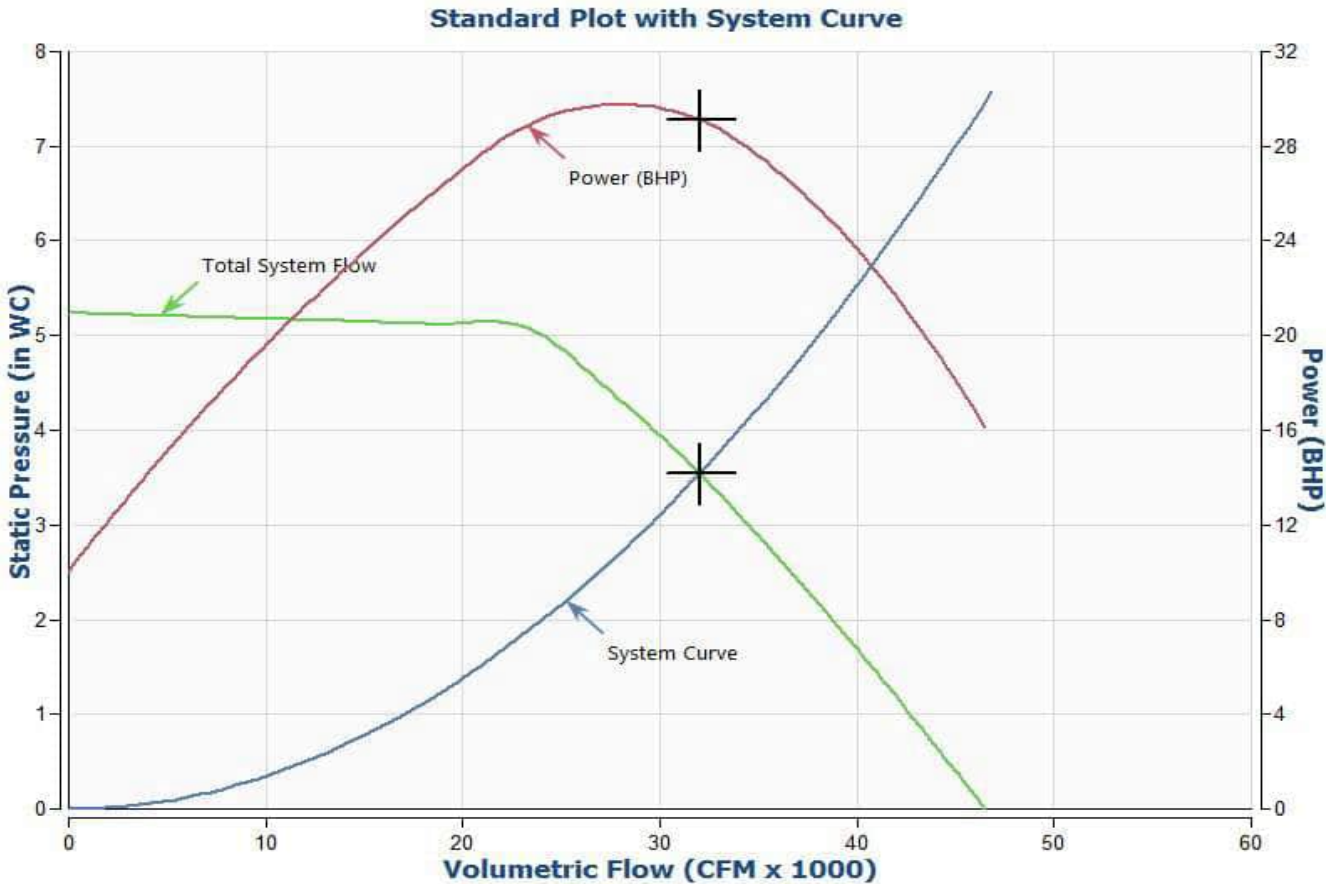
Customer:
Job ID:
Date: March 17, 2026

Tag: SUPPLY FANS

Fan information

Size/Model	222/EPFN	Class	I	FEI	1.23
Volumetric Flow (CFM)	32000	Speed (RPM)	1834	System FEI	1.16
SP (in WC)	3.54	Max Speed	1,888 RPM @ 70 °F	FEP (KW)	5.95
		Power (BHP)	29.12	System FEP (KW)	5.95
		Outlet Vel (FPM)	2085	CA T20 Compliant/Exempt	Yes
		Density (lb/ft ³)	0.075		

Adjusted for (4) fans operating in parallel



Job Name:



Customer:
Job ID:
Date: March 17, 2026

Sound Power	Octave Bands	1	2	3	4	5	6	7	8	LwA	dBA
	Inlet dB	87	90	98	91	84	82	79	73	93	79
	Outlet dB	90	92	98	96	91	88	86	82	97	83



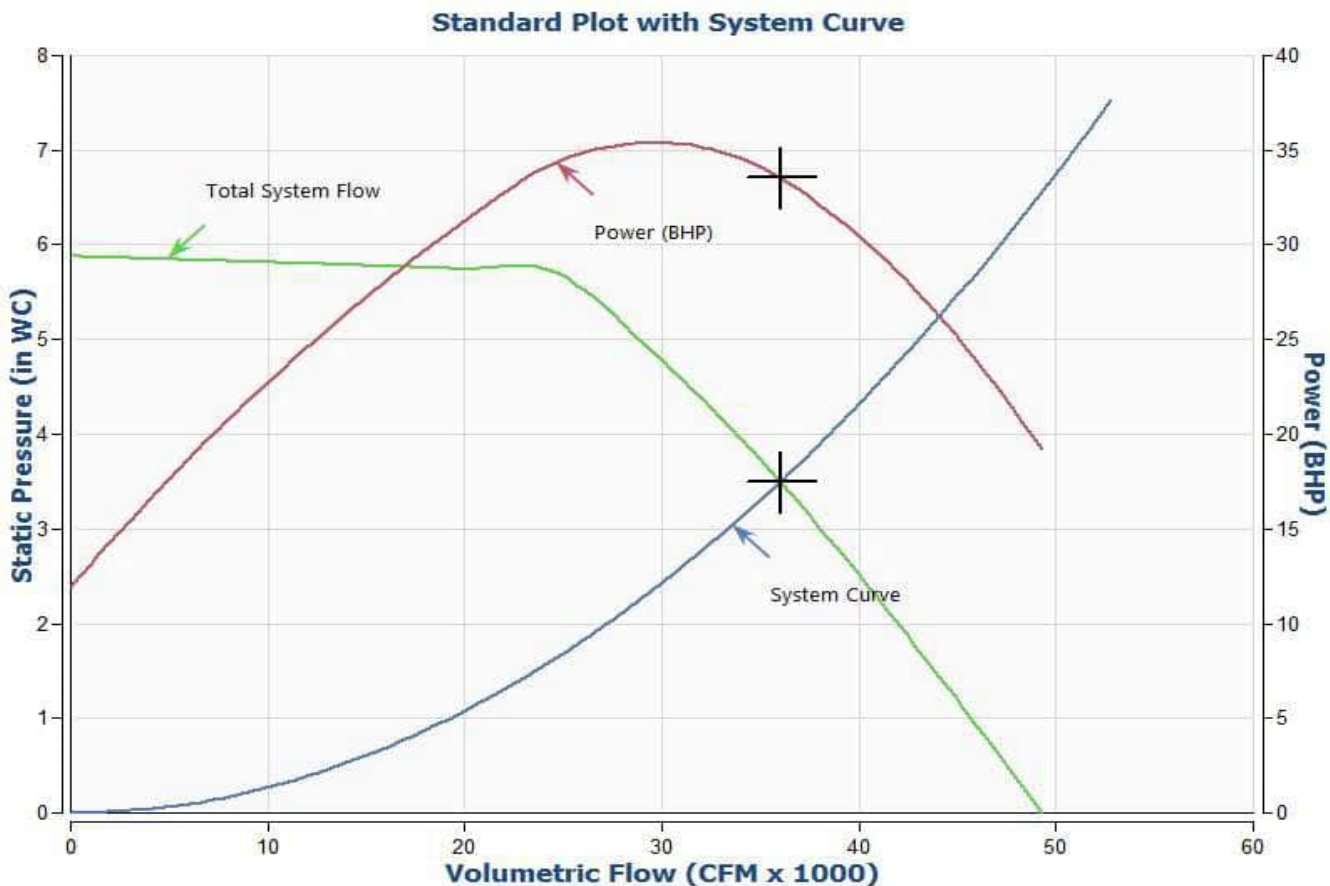
Customer:
Job ID:
Date: April 21, 2026

Tag:

Fan information

Size/Model	222/EPFN	Class	II	FEI	1.18
Volumetric Flow (CFM)	36000	Speed (RPM)	1943	System FEI	1.12
SP (in WC)	3.5	Max Speed	2,403 RPM @ 70 °F	FEP (KW)	6.83
		Power (BHP)	33.56	System FEP (KW)	6.83
		Outlet Vel (FPM)	2345	CA T20 Compliant/Exempt	Yes
		Density (lb/ft ³)	0.075		

Adjusted for (4) fans operating in parallel



Job Name:



Customer:
Job ID:
Date: April 21, 2026

Sound Power	Octave Bands	1	2	3	4	5	6	7	8	LwA	dBA
	Inlet dB	86	89	99	93	85	84	80	74	95	80
	Outlet dB	90	92	99	97	93	89	87	83	99	84

Unit Sound Data

May 1, 2026

JOB NAME: Esquimalt Recreation Centre

JOB NUMBER: C6-16-28

INSTALLATION:
UNIT TAG: AHU-1

UNIT CONSTRUCTION:

CASING METAL:	18 ga	INSULATION DEPTH:	2 in
LINER METAL:	22 Thru-out ga	INSULATION DENSITY:	3.0 lbs /cu.ft.

SOUND SOURCE DATA:

Blower	Make	Type	Size	Qty	Total	TSP (³ /wc)	Speed (rpm)	BHP	Sound Power Data								
										63	125	250	500	1000	2000	4000	8000
S/A	TwinCity	EPFN	222	4	32000	3.54	1834	7.28	Inlet	87	90	98	91	84	82	79	73
									Outlet	90	92	98	96	91	88	86	82
R/A	TwinCity	EPFN	222	4	36000	3.5	1943	8.39	Inlet	86	89	99	93	85	84	80	74
									Outlet	90	92	99	97	93	89	87	83

UNIT S/A OUTLET:

CENTER FREQUENCY (Hz)	63	125	250	500	1000	2000	4000	8000	A-weighted
SOUND POWER Lw (dB)	97.0	100.6	107.1	104.6	100.1	96.6	94.0	90.0	106.1

UNIT R/A INLET:

CENTER FREQUENCY (Hz)	63	125	250	500	1000	2000	4000	8000	A-weighted
SOUND POWER Lw (dB)	94.2	97.2	106.5	100.0	92.2	91.0	86.9	80.9	101.7

UNIT CASING *:

CENTER FREQUENCY (Hz)	63	125	250	500	1000	2000	4000	8000	A-weighted
SOUND POWER Lw (dB)	87.9	87.2	92.6	82.9	71.8	64.8	62.5	58.2	85.6

* Unit casing sound includes casing breakout and sound sources outside the air streams only. Sound from openings are not included in unit casing sound.

Note:

Unit sound data are calculated for the specified unit construction and operating condition as shown above.

